

what's on

TABLELANDS



2026 Tablelands Sports & Recreation Guide

2026 Tablelands Bucket List | The Dirt | Bike & Pump Tracks
Community Calendar | Event Highlights | Tales of the Tablelands | Markets

WHAT'S ON JAN / FEB



At the Atherton International Club

Mondays

Canasta
12pm



Tuesdays

Bingo Eyes Down 9:15am
Morning Melodies 27th Jan
With Emily James 24th Feb

Wednesdays

Texas Hold 'em Poker
6:30pm

Thursdays

Trivia 1st & 15th Jan 7pm
Charity Trivia 29th Jan 7pm
Tableland Wildlife Rescue
Trivia 5th Feb 7pm
Tableland Community Link
Charity Trivia 19th Feb 7pm

Fridays



Live Music Every Friday From 7pm

2/1- Darren Leonard
9/1 Infinity Duo
16/1 Emily James
23/1 Paronllas
30/1 Steve Williams

6/2- Carrinda Christie
13/2 Infinity Duo
20/2 Emily James
27/2 Paronllas

Goose Club Raffle
From 7pm
Members Draws
7:30pm & 8:30pm



Saturdays

Monster Meat Tray Raffles
Sold from 6pm -
Drawn 7pm & 8pm
+ Bonus cash draw \$300



Valentines Day-14th February

Sundays

Members Draws
6:30pm & 7:30pm

Daily prizes and giveaways
Free pool tables



**Rump
~~Hump~~
Day**

\$25

250GM TABLELANDS
GRASS FED RUMP (GF)
CHOICE OF 2 SIDES:
THICK CUT CHIPS, GARDEN SALAD, SEASONAL
VEGETABLES, OR MASHED POTATO



Sunday Dinner
Seasonal Buffets
25th Jan
22nd Feb

BB's @ The Club



what's on

TABLELANDS

Welcome to the Jan/Feb issue of What's On!



Happy New Year and welcome to our January/February Bumper Issue!

What a massive edition we have to start 2026. Inside you'll find our highly

anticipated Sports & Recreation Guide, featuring everything you need to plan your sporting, social, and recreational activities for the year ahead. It's always one of our most popular inclusions, and this year's guide is bigger and better than ever.

You'll also discover an inspiring story from local Katie in our Tales series, a heartwarming read to inspire you this new year, along with plenty of community news, events, and opportunities to get involved across the Tablelands.

2026 is already shaping up to be an exciting year, with many groups, clubs, and organisers well into planning mode. From local festivals to community activities, there is so much to look forward to, and we can't wait to share it with you, so stay tuned.

Happy Reading!

Mia Bain



Jan/Feb issue

www.whatsontablelands.com.au

Want to be part of *What's On Tablelands* and promote your business or event?

Let us help! Contact us for rates and to book advertising:

info@whatsontablelands.com.au

Front cover: Atherton International Club
Photography: Kaddiesha Leask
Denim & Lace Photography
Circulation: 8,000 across the Tablelands
Editorial/Design: Mia Bain
Media/Content: Dominique Bain

0408 882 338
info@whatsontablelands.com.au
PO Box 1235, Tolga Qld, 4882
Whats On Tablelands
[@whatsontablelands](https://www.instagram.com/whatsontablelands)

We acknowledge the First Nations people who have owned, cared for, protected and nourished this Country where *What's On Tablelands* is created and distributed. We recognise their continuing connection to Country and pay our respects to their elders past, present and emerging.

Publisher's Note: Views expressed are not necessarily those of the publisher or its advertisers. Information contained in this magazine is subject to copyright and may not be reproduced, copied or transmitted in any form or by any means without prior written consent from What's On Tablelands. While every endeavour has been made to ensure accuracy, the publisher cannot be held responsible for any errors, changes or omissions.



win! win! win!

Enter to win a \$100 Shop Tablelands gift card!



Entries close 24 February 2026
Enter online at: www.whatsontablelands.com.au

* Terms & conditions apply.
See *What's On Tablelands* website for details.



Crater Mountain Coffee Plantation, photo by Bill Board – full story p. 16-17

Atherton Chamber of Commerce

Ghis Gallo shares the exciting plans for the ATCC

Over the past three months, the Chamber has been quietly but steadily building momentum. With our new committee in place, we've been doing our best to bring fresh energy, clearer communication, and a more connected approach to supporting the Atherton business community. We're still finding our rhythm, but the teamwork and enthusiasm within the group have been really encouraging.

One of the early highlights for us was the BV networking event, where we had the chance to meet community members and local businesses and share the direction we hope to take. It felt like a positive step toward rebuilding connections and understanding what people want from their Chamber. We also hosted our Ladies' Shopping Night, which turned out to be a wonderful evening. The turnout, the atmosphere on Main Street, and the support from local retailers were beyond what we expected. The feedback and community support have been overwhelmingly positive, and it's becoming clear that there is a real need – and a

real appetite – for a Chamber that's active, approachable, and genuinely here for Atherton.

As we continue advocating for projects like a Beautification Committee for the town, we'd love more people to join us. You don't have to attend meetings or take on any commitments – just being a member helps strengthen our voice. And the more members we have, the louder and more effective that voice becomes for our town and region.

This is your committee, feel free to reach out:

President – Ghis Gallo; Treasurer – Andrea Chamberlain;

Appointed Secretary – Bronwyn Jones;

Committee Members – Kay McDonald and Janelle Moses.

You can also follow the ATCC Facebook page to stay up-to-date with current news and chamber events..

If you're interested in joining the Atherton Chamber of Commerce, membership enquiries can be sent to info@athertonchamber.com.au



Atherton Rotary Spreads Christmas Generosity Across Our Community

People of Action

TRC Mayor's Christmas Appeal



Atherton Rotary is proud to continue its longstanding tradition of supporting local families and community organisations during the holiday season. With a focus on dignity, wellbeing, and genuine local impact, members have worked tirelessly to ensure that help reaches those who need it most.

A highlight of this year's giving is a significant **\$5,000 donation to the TRC Mayor's Christmas Appeal**, helping provide essential support and festive relief to families across the region. In addition, Atherton Rotary has contributed generously to community hamper programs, supplying **Christmas goods for 100 hampers with Better Together** and **a further 30 hampers with ECHO**. These hampers offer comfort and joy to households who may otherwise go without during this special time of year.



ECHO



Better Together

Recognising the increasing need among vulnerable individuals, Atherton Rotary has also donated **\$1,000 to ECHO** to fund **five Single Homeless Kits**, providing practical assistance and immediate support for those facing hardship.

Each of these contributions reflects Rotary's ongoing commitment to service and compassion. As we celebrate the spirit of Christmas, Atherton Rotary remains dedicated to uplifting our community and standing alongside local families this festive season.



Soroptimists

Tropical Tablelands Club



Soroptimism is a global volunteer movement whose mission is to transform the lives and status of women and girls through education, empowerment and enabling opportunities. Soroptimists have been active globally since 1921, and in Atherton for over 30 years.

The name Soroptimist was coined from the Latin soror, meaning sister, and optima, meaning best. And so the term Soroptimism is perhaps best interpreted as 'the best for women'. The local Soroptimist Tropical Tablelands club is a band of dedicated women of all ages working

together to support women, children and families in the local community.

Members participate in advocacy work but also on-the-ground projects, seeking to ensure that women and girls have an equal voice in creating strong and peaceful communities, now and in the future. The club members are often seen in the community hosting sausage sizzles, high teas, International Women's Day events and movie premieres. They also work in partnership with other service clubs to host events and to promote their vision. The local Soroptimist group meets twice a month on the second and fourth Tuesday, and gladly welcomes new members. They meet together in the function room of the Atherton Hotel on Main Street at 5:30pm. For more information or to reach out to the club, you can find them on Facebook.



If you'd like more information, you'll find all the details on their Facebook page: **Soroptimists - Tropical Tablelands - Internationals, Meeting Locally.**



Capturing real moments, real smiles & real love all while having fun and being relaxed.

Denim & Lace

PHOTOGRAPHY

Timeless Candid Relaxed Story telling

For Inquiries & bookings please contact Kaddiesha
denimandlacephotography.com.au
0432201729
Find Us on Facebook & Instagram

Sound Sculptors Studio

- Professional Sound Recording & Production
- Full Digital Mixing and Mastering
- Session Players Available

Set in the natural bushland of the Atherton Tablelands in FNQ

Drum Lessons
Any Age
Any Style
\$35
Half Hour

Joe Vizzone
0408751425
Tinaroo



Trails & Destinations

Your 2026 Tablelands Bucket List

Sometimes, as life gets hectic and the years move quickly, we can easily forget that we live in one of the most beautiful places on earth. People come from all over the world to visit the region we call home. We often hear people say, "I've lived here for years and never done that," or "I've never even heard of this!"

So why not make 2026 the year you become a tourist in your own backyard? We've given you a head start with a 2026 Atherton Tablelands bucket list. Some experiences take a little planning, while others are simply a matter of changing your routine. Come with us as we embrace and enjoy living life in this incredible holiday destination. Let's get out there, try new things, and help our community thrive. Keep up to date with new events, local adventures, and new businesses through our website, printed magazine, and social media pages.

Your 2026 Tablelands Bucket List

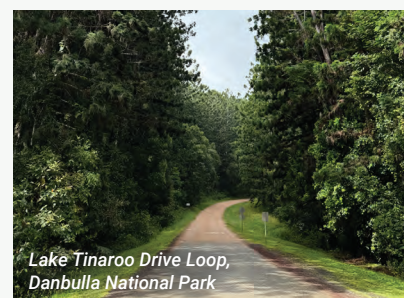
- Climb **Mount Baldy** for sunrise.
- Walk the Lake Barrine track and follow up with a Devonshire tea at the **Lake Barrine Teahouse**.
- Take a winter dip in **Lake Eacham** – our very own polar plunge!
- Visit local **Visitor Information Centres** – you'll be amazed at what you'll learn about local history and the environment.
- Explore one town you've never truly visited.** Wander its main street, try a local café, or visit its monthly market – full market list on p.27 for inspiration!
- Do a section of the **Rail Trail** on foot or by bike.
- Enjoy a sunset over **Tinaroo** with a picnic dinner.
- Explore **Mobo Creek Crater**.
- Book a short staycation at a **local B&B or caravan park**.
- Step back in time for Pioneer Day at the **Historic Village Herberton**, 30-31 May 2026.
- Hike a section of the **Great Northern Fire Trail** in Herberton and stop in at the amazing Herberton Mining Museum.
- Plan a visit to a **local gallery or museum** you've never been to – with exhibitions all year round, there's always something new to see.
- Catch a production by one of our **local performing arts groups**.
- Book one **guided tour**, tasting, or night walk.
- Try a **sport or recreation activity** you've never done, like pickleball or lawn bowls at the friendly Yungaburra Bowls Club.
- Visit Emerald or Davies Creek, and stop in for an **Emerald Creek Ice Cream** – challenge yourself to try a flavour you've never had!
- Drive the loop around Lake Tinaroo through **Danbulla National Park**.
- Try a **pottery or art class** with one of our many talented local artists.
- Watch wildlife at dusk** at a quiet creek or wetland.
- Support our amazing local **live music scene** – visit your local pub, distillery, music venue, or outdoor park performance.



Pioneer Day - Historic Village Herberton



Malanda Falls Visitor Information Centre



Lake Tinaroo Drive Loop, Danbulla National Park



Function Room



The popular fortnightly Trivia Night



AIC team members

The Atherton International Club

Built by community, growing with community

Born from a dream in 1976, The Atherton International Club (AIC) began when local visionary, Pietro Cuda, returned from visiting the Parramatta Italian Club and imagined the same spirit of culture and connection for Atherton. With community pioneers like barber Sam Valastro rallying support, forty locals met on 1 July, 1976, laying the foundations for the thriving club we know today.

Under the leadership of first president Sam Curcio, passionate volunteers secured seven acres of land and built the original clubhouse by 1978. The very first event – a wedding hosted by the Ladies Committee – marked the beginning of decades of celebrations, milestones, and memories shared within their walls.

Growth flourished under the guidance of Frank Gallo, who oversaw the addition of a major function hall. As more land was donated, sport became central to their identity, making the Club a proud home for cricket, soccer, and touch football. Today, the AIC continue this legacy as the home base of the Atherton Eagles Soccer Club and Atherton Touch Football, nurturing local talent and community participation.

The Club's journey has continued through substantial

renovations led by Terry Clark, John Wilkinson, and Joe Barletta Jr., ensuring the Club remains fresh, functional, and welcoming. With major upgrades completed in 2022, the venue now features dining, gaming, lounges, bocce and pool tables, a spacious main hall with stage, versatile event facilities, and our popular sunset deck overlooking breathtaking rural views.

As a not-for-profit organisation, community is at the heart of everything. AIC proudly supports local groups including Lions Club, Rotary Club, Partners of Veterans Associations, The Hospital Foundations for bingo, fundraising events, and more. Fortnightly trivia night with Keith – often hailed as the best on the Tablelands – brings familiar faces and new friends together for fun and laughter.

With something happening every day of the week, and every visitor welcomed, AIC invites you to experience the Atherton International Club for yourself – where history, hospitality, sport, and community spirit come together in one vibrant Club.

To keep up to date with what's happening at the Atherton International Club, visit athertoninternationalclub.com.au or find them on Facebook.





Kids on the Tablelands

Pump Tracks & Bike Tracks

The Tablelands is a cyclist's dream! People come from far and wide to experience our mountain biking scene – and up here, we start them young. Here is a list of skate parks and pump tracks across the region. From easy to advanced, there's something for every rider. There are lots of exciting plans underway for new pump tracks, learn-to-ride paths, and developments such as the Priors Creek project and Battery Park in Herberton. Keep your eyes peeled for updates, and remember to check local notices for track conditions and operations before planning your outing!

Atherton BMX Club, Grove St, Atherton

The only BMX club outside Cairns. Membership is required to ride the track, but spectators are always welcome on open days. Riders must wear a helmet, gloves, long pants, a long shirt and bring their own bike. Follow them on Facebook for updates.

Atherton Skate Park, Vernon St, Atherton

Located behind the Atherton Library (access from Vernon St). Suitable for a range of ages and skill levels.

Evans St Parkland, Atherton

While not specifically a bike track, this sealed loop in a mostly fenced oval is perfect for kids to ride around.

Malanda Pump Track, Jack May Park, Mary St, Malanda

A sealed circuit with rolling humps suited to both newer riders and confident kids building their skills. Large shade trees, picnic tables, and the nearby nature play park make it a great family spot. Grab a pizza from Pink Pineapple Eats for an easy day out!

Mareeba Pump Track (sealed), Mason St, Mareeba

Located in the southern section of Bicentennial Lakes. Includes shady picnic tables and a playground nearby.

Mareeba Pump Track (unsealed), corner of Byrnes St & Hwy 1, Mareeba

A grassy, dirt-style pump track next to the Mareeba

Heritage Museum. Great for young kids learning to navigate bumps and small jumps. Mostly shaded – a blessing in the Mareeba heat.

Mareeba Skate Park, Walsh St, Mareeba

Beside the PCYC. Features a mix of beginner and advanced elements. Can get busy, so best for little riders during school hours.

Millaa Millaa Pump Track, Lions Park, Main St, Millaa Millaa

Good for young riders. Built on a gentle hill, giving it a bit more challenge than Tolga or Mareeba's unsealed tracks. Pair with a visit to the playground for a fun outing.

Ravenshoe Skate Park, Ascham St, Ravenshoe

The smallest park on the Tablelands. Better suited to experienced riders, though little ones can still enjoy it with supervision.

Tolga Pump Track (unsealed), Main St, Tolga

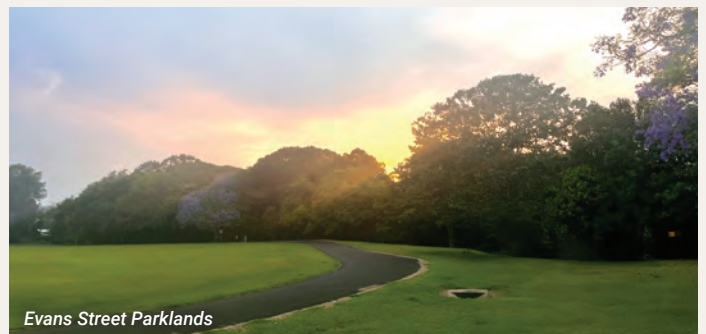
Small dirt mounds ideal for young riders gaining confidence. Located just past the playground.

Yungaburra Pump Track, Mulgrave Rd, Yungaburra

Beside the Yungaburra Memorial Hall. The bumps and jumps are too big for very young kids, but the open hall provides a great undercover area for little ones to scoot. Older kids will enjoy the track's bigger features.



Atherton BMX Club



Evans Street Parklands

Sports & Recreation

2026 Guide

Your 2026 guide to staying active, connected and creative! Featuring sporting clubs, social groups, arts, hobbies and community activities across the Tablelands.

GRACE CHAPMAN
Feldenkrais Practitioner
0428 451 679

AWARENESS through MOVEMENT
Weekly lessons and Private
Consultation at Malanda

REDUCE PAIN
IMPROVE FITNESS & WELL-BEING
Move yourself to know yourself

Row for health, fun and fitness
on beautiful Lake Tinaroo



**Tablelands Country
Rowing Club**

Come rowing, on beautiful Lake Tinaroo
Our club is open to adults of all ages
New Learn to row or return to rowers welcome
Enquiries: tablelandsrowing@gmail.com
www.tablelandscountryrowing.org.au FOLLOW US ON FACEBOOK

Hip Hop - Jazz - Ballet

Dance for Fun in
Atherton

Enrol online:
debbiesacademyofdance.com.au

Ages 3-18 yrs

**Classes start
2nd of Feb**

0427 711 083



Join the Malanda Eels Junior Rugby League Club!

**Come, try, meet the
coaches and join the
team:**

31 Jan

10am - 2pm

Malanda Showgrounds

Any questions call Rachel 0414627577

COACHES 2026

LLStar - Jacinta Teahan
U6s - Darren Ball
U7s - Tim Hawkins
U8s - Brooke Ashford
U10s - Brendan Power
U12s - David Green
U13s - Morgan Brennan
U16s - Dean Coutts

sports & recreation 2026 guide



ATHLETICS

Tableland Athletics Club

Tolga Reserve, Tolga
0427 954 729 | tablelandathletics.com
FB: Tableland Athletics Club

BASKETBALL

Atherton Basketball Association

Atherton State High School Community Hall
Junior competition – U10 to U18's
Senior competition – Men & Women
All players welcome, no experience necessary.
athertonbasketballassociation@gmail.com
Register online: athertonbasketball.com
FB: Atherton Basketball Association

Mareeba Basketball Association

FB: Mareeba Basketball

BMX • BIKES

Atherton BMX Club

Grove Street, Atherton. Ages 2yrs+.
All year round, during school terms.
FB: Atherton BMX Club

Atherton Tablelands (SAO) Cycling

Local group of cyclists that ride tracks, trails,
back roads and side tracks.
FB: Atherton Tablelands SAO Cycle Riding

Mareeba Mountain Goats

mareebamountaingoats@gmail.com
FB: Mareeba Mountain Goats Inc

DANCE

In2dance

Cnr Jack & Mabel Streets, Atherton. Ages 3yrs-adult
– Jazz, Tap, Hip Hop, Lyrical, Contemporary, Ballet,
plus morning classes for kindy kids.
Lorraine 0447 916 200 | in2dance.com.au

Mareeba Academy of Dance

0452 606 557 | mareebaacademyofdance.com

Debbie's Academy of Dance

Atherton Masonic Hall. Ages 3-18yrs. Enrol online
now for 2026. Classes start 2 Feb, 2026.
0427 711 083 | debbiesacademyofdance.com.au
FB: Debbie's Academy of Dance

GENERAL FITNESS

Ashley Cupitt Boxing Academy

Corner of McConaghie & Wylie Streets, Atherton
Ages 5yrs+. Season Dates: Jan-Dec
0444 550 072 | acboxing.com

Atherton Parkrun

Cnr Herberton Rd & Weaver St, Atherton
7am Saturdays | 0409 958 129
FB: Atherton Parkrun

Fitness in the Park Atherton

Solar Crescent/Planet Avenue Park, Atherton.
A welcoming, community-focused group. Mon & Fri,
5:30-6:30pm. Donation-based. Open to all ages and
fitness levels. IG: Fitness in the Park

F.L.I.C.K. Sports Academy

Jack May Park Malanda, Ashley Cupitt Boxing
Academy & Six Gym Atherton. Ages 5yrs+.
Fun modified sports games, fitness classes for kids
and teens. Start date: 28 Jan 2026.
Register online: flicksa.com.au

Pickleball

Malanda High School Hall, Malanda
4:45pm (Tue), 6pm (Thu), 8:30am (Sun)
\$5 per session. Equipment provided. 0419 792 786

Six Degrees Gym & Bouldering, Atherton

Personal training, group fitness classes, kids/teens
fitness classes, child minding, bouldering.
4001 2539 | info@sixdegreesgym.com.au

Tableland Bush Walking Club

Every 2nd Wednesday & Sunday.
New members welcome.
View program online: tablelandsbushwalking.org

Tableland Roller Derby League

Atherton State High School Hall, Maunds Road,
Atherton. Ages 10yrs+ (U10s at discretion of
Coach). Come & Try Days: Feb 22 & Nov 01.
Sundays 2-4pm, during school terms, from Feb.
0417 641 341
secretary@tablelandrollerderby.com
FB: Tableland Roller Derby League



All ages welcome
for 2026 season

MiniRoos: Ages 5-12 yrs

Junior: Ages 12-16yrs

Senior: Ages 17+

Ladies: All ages

Pre-season Training Starts:

MiniRoos: TBC

Juniors: Feb

Seniors: Jan

Ladies: TBC

Check Facebook for
season start dates

0408 166 684

athertonfc@gmail.com



GEMS – ROCKS – MINERALS

Classes in Silversmithing, Facet-
ing, Cabochons & Silvercasting

Mondays: 5.30-9.30pm

Wednesdays: 8am-4pm

Saturdays: 8am-12pm

Tolga Market Day (1st Sun of
the month): 7.30am-12pm

A great teaching & social club
that offers cheap yearly
membership.

Ph. Jan 0417 746 630

Lot 2, Racecourse Rd,
Tolga

Open 7 Days
9am - 3:30pm



PLUTO & NESSIE
www.plutoandnessie.com

UPCOMING EVENTS

Board Games Nights

SOCIAL EVENT

DINNER INCLUDED

2nd Friday of the month. Booking essential

Games Room Hire

SELF GUIDED

ACCESS TO OUR GAMES LIBRARY

EVERYDAY & ANYTIME, during trading

Beginner D&D

SMALL CLASS

EQUIPMENT INCLUDED

See social media for upcoming dates

Seniors' Games Morning

ONLY \$10 | PLAY ANY GAME

Every Thursday morning. Booking essential

Ph: 0423160874

Email: hello@plutoandnessie.com
The Red Sheds Shopping Complex
Eacham Rd. Yungaburra



sports & recreation 2026 guide



GENERAL RECREATION

Adventure Sport NQ

Cairns and The Tablelands
Season: February-November
0407 725 909 | adventuresportnq.info
kim@adventuresportnq.info
FB: Adventure Sport NQ

Atherton Junior Golf

Atherton Golf Club, Jessop Road, Atherton
practice. Ages 5-17yrs
athertonjuniorgolf@outlook.com

Atherton Tableland Mineral & Lapidary Club

Lot 2, Racecourse Road, Tolga. Classes in
Silversmithing, faceting, cabochons & silvercasting
5:30-9:30pm (Mon), 8am-4pm (Wed), 8am-12pm
(Sat), 7:30am-12pm (Tolga Market Day)
Jan 0417 746 630

Awareness Through Movement (Feldenkrais)

Malanda Men's Shed Hall, Mary St, Malanda
6:15pm (Tue online), 1:30pm & 5:30pm (Wed),
8:45am (Thu). \$15, suits all levels of fitness.
Grace 0428 451 679

Dream Big! Circus & Aerial Classes

Koah Hall, Koah
0409 333 404 | dreamstatecircus.com

Horse & Bow

Monthly Tablelands rally days including ground
archery and horseback archery (own horse required).
Selena 0407 170 868 | FB: Horse and Bow

Pluto & Nessie

Eacham Road, Yungaburra. Social board game
nights, game room hire, beginner D&D sessions,
and seniors games mornings. A fun, inclusive
space where everyone is welcome. 0423 160 874
hello@plutoandnessie.com | plutoandnessie.com
FB/IG: Pluto & Nessie

Trees for the Evelyn & Atherton Tablelands

QPWS Lake Eacham Nursery, McLeish Road
Tree planting Saturday mornings (during wet
season). 4095 3644 | info@treat.net.au
treat.net.au

GYMNASTICS

Malanda Gymnastics Club

William Street, Malanda. Ages 1yrs+
Non-competitive classes, WAG, MAG, Rhythmic,
Cheerleading, adult fitness classes.
Start date: 28 Jan 2026
0438 642 498 | info@flicksa.com.au
Register: flicksa.com.au/malanda-gymnastics

Mareeba Gymnastics Inc.

31-39 Abbott Street, Mareeba
0466 109 153 | mareebagymnastics.org.au

Gymnastics Atherton

Atherton Showgrounds, Corner of Robert and
Louise Street, Atherton
0427 079 703 | FB: Gymnastics Atherton
contact@gymnasticsatherton.com.au

JUNIOR RUGBY LEAGUE

Malanda Junior Rugby League Club

4 Park Avenue, Malanda. Ages 6-16yrs
Season: March-September
Training Tuesdays & Thursdays
0414 627 577 | mjrl@hotmail.com.au
FB: Malanda Junior Rugby League

Atherton Junior Rugby League

secretary@athertonjrl.com.au

Mareeba Junior Rugby League Club

mjrlsecretary@gmail.com | mjrl.com.au

Ravenshoe & District Junior Rugby League

ravenshoeigers@hotmail.com

MARTIAL ARTS

Bujinkan dojo, Southern cross

Cedar Street, Yungaburra. Ages 14yrs+
Sign up anytime of year | 0402 778 771
FB: Bujinkan Kobudo - Southern Cross Dojo,
Yungaburra

North Queensland Ju Jitsu Academy Inc

First Floor, 101 Byrnes Street, Mareeba. Ages 5yrs+
0494 081 316 | nqjja.com.au

Funding for
Arts, Culture &
Heritage Projects
& Professional
Development

Major Grants
Up to \$6000 per application
over two rounds per year

Small Grants
Up to \$1000 per application
available anytime until funds
are spent

More information
artsofficer@trc.qld.gov.au

Apply
trc.qld.gov.au/radf-grants

TRC
TABLELANDS REGIONAL COUNCIL

Queensland
Government

The Regional Arts Development Fund is a
Queensland Government and Tablelands Regional
Council partnership to support local arts and
culture in regional Queensland.

ASHLEY CUPITT
BOXING ACADEMY

**Fitness, Rehabilitation
Self-Defence, Mentoring
Competitive Boxing**

Ages 5 years and over
Yearly Membership Fee & Pay per
class (discounted for members)
Casual classes, pre-paid class cards
Season times - Jan to Dec

Corner of McConaghie St
& Wylie St, Atherton.
0444 550 072
acboxingacademy@gmail.com
acboxing.com

TRC TABLELANDS GALLERIES
Must-see Galleries

Tableland Regional Gallery
16 Robert Street, Atherton

Old Post Office Gallery
86 Atherton Herberton Road,
Atherton

Foyer Gallery
45 Mabel Street, Atherton

See trc.qld.gov.au/galleries for
opening times and exhibition details.

sports & recreation 2026 guide



Rhee Taekwondo

Ravenshoe Primary School Hall,
Ascham Street, Ravenshoe
Jacob 0409 879 290
FB: Rhee Taekwondo Ravenshoe

Tableland Freestyle Taekwon-do

Merriland Hall, Atherton Showgrounds
Ages 8yrs+, all welcome any time.
Ben Azzopardi 0402 356 063
FB Group: Tableland Freestyle Tae Kwon Do

Tolga Martial Arts Association

Race Course Road, Tolga
Training Mon & Weds, 7pm-9pm.
Rinaldo 0429 954 012

NETBALL

Tableland Netball Association

Fun and welcoming for all ages and skill levels.
info@tablelandnetball.com.au
FB: Tableland Netball Association

ON THE WATER

Barron River Waterski Club

Barronriverwaterskiclubqld@gmail.com
FB: Barron River Water Ski Club

Tablelands Country Rowing Club

Adults of all ages and experience levels.
tablelandsrowing@gmail.com
tablelandscountryrowing.org.au
FB: Tablelands Country Rowing Club

COME AND TRY DAY

**THURSDAY 12TH FEBRUARY
FROM 4.30PM**

STAY ON TO WATCH OUR MEMBERS RIDE AND
LEARN MORE ABOUT BMX
CANTEEN AVAILABLE

WHAT TO BRING:
LONG PANTS
LONG SLEEVE SHIRT
CLOSED IN SHOES

OPTIONAL:
HELMET, GLOVES,
BIKE

FIND US ON
 ATHERTON BMX
 ATHERTON_BMX
 LINKTR.EE/ATHERTONBMX

BMX IS FOR EVERYONE AGED 2 TO 65+

ROLLER DERBY

+
Juniors

Come and Try Days
No Experience Necessary
We teach you to skate!

Feb 22 & Nov 1
**ATHERTON STATE
HIGH SCHOOL HALL**
FREE TRIAL

Includes Skate and Safety Gear Hire
BYO Socks & Skate Helmet if possible

**Sign up: Touch Football
Australia website**

Juniors:
Term 1 & Term 4, 2026

Senior Mens and Ladies:
Term 1 and 2, 2026

Senior Mixed:
Term 3 and 4, 2026

Fb: AthertonTouchFootball
athertontouchfootball@gmail.com

Classes: Tuesday & Thursday
4-5.30pm & 5.45-7.15pm @ Merrilands Hall,
Atherton - Ages 9 and up

Improve Strength, Flexibility, Fitness, Mental
Sharpness, Reaction Time, Self Defence

Accredited Instructor: Ben Azzopardi

0402 356 063 Find us on Facebook

sports & recreation 2026 guide



Tinaroo Sailing Club

info@tinaroosailingclub.com.au
tinaroosailingclub.com.au
FB: Tinaroo Sailing Club

The Dam Outrigger Canoe Club

Tinaburra Drive, Yungaburra
damoutriggers@gmail.com
FB: The Dam Outrigger Canoe Club

What'SUP Cairns Stand Up Paddleboarding

Tinaroo, Kuranda and Fitzroy Island
All year round, full moon paddles, group bookings,

private lessons, night paddles and schools.
4243 3242 | whatsapp Cairns.com.au
FB: What'Sup Cairns

SCOUTS • GIRL GUIDES

Atherton Girl Guides

athertonDM@guidesqld.org

Atherton Scout Group

Welcoming new youth members. Ages 5yrs+.
Join us for camping, abseiling, and loads of outdoor adventure. 0438 636 289
232355@scoutsqld.com.au

Malanda Girl Guides

malandaDM@guidesqld.org

Mareeba Scout Group

0448 680 445 | contact@mareeba.scoutsqld.com.au

SOCCER • FUTSAL

Atherton Eagles Football Club

Ages 5yrs+. 0408 166 684
athertonfc@gmail.com

Dimbulah Barras Football Club

dimbulahbarras@gmail.com

WHAT'SUP CAIRNS STAND UP PADDLEBOARD
Adventure Tours

- Full moon paddles
- Downwind paddles
- Team building
- Bday Parties/Retreats
- Group/Private bookings
- Lesson, equipment & guide included
Cairns Canyoning & Barefoot Tours

Tinaroo/Kuranda/Fitzroy
07 4243 3242
whatsapp Cairns.com.au

ADVENTURE SPORT HQ
outdoor adventure

Trail running
Navigation Training
Rogaining
Orienteering

adventuresportnq.info

Bujinkan Dojo-Yungaburra Est. 2012
Training the body, mind and spirit, in the timeless warrior art of the samurai and ninja.

- ❖ Supportive, Non-competitive Atmosphere
- ❖ Beginners Welcome - Adults and Teens(14+)
- ❖ First Lesson Free

Wednesdays 6-8 pm, @ Yungaburra
Community Hall
0402778771
dojobujinkan@gmail.com

Are you part of a sporting club or community organisation?

Register your details on our club and organisation database!

Sign up at trc.qld.gov.au

TRC
TABLELANDS REGIONAL COUNCIL

Tablelands Regional Council

Herberton Mining Centre

Dig into the Past!

- Heritage listed Great Northern Mine site
- Research and genealogy
- Working mining exhibits and scale models
- Mineral collections
- Tours and talks by arrangement
- Tin panning and interactive displays
- Extensive walking trails
- Visitor information

Entry by Donation

OPEN DAILY
1 Jacks Road, Herberton
herbertonminingmuseum.com

TABLELAND NETBALL

Where passion meets community sport!

Proudly serving as the heart of netball across the Atherton Tablelands, we deliver a fun, active and inclusive experience for players of all ages and skill levels. Whether you're a seasoned competitor, returning player or complete beginner, our supportive environment helps you grow, connect and enjoy the game you love.

What do we offer?

- Structured Competitions
- Net Set Go Program
- Junior Development Programs
- Umpire Pathways
- Opportunities for Representative Netball
- Coaching Pathways

FOLLOW US ON FACEBOOK
info@tablelandnetball.com.au

Fun • Fitness • Friendship



FUN LOVING INDEPENDENT CARING KIDS

Sport programs run by qualified coaches to inspire your kids, to foster healthy habits, build their confidence, learn team work, improve communication skills & promote personal growth.



MALANDA GYMNASTICS

- Kindergym
- WAG & MAG
- Rhythmic Gymnastics
- Cheerleading
- Boys Gymnastics
- Adult Classes
- Tramp & Tumbling

@ MALANDA GYMNASTICS CLUB



SPORTS IN THE PARK

- Play a large variety of fun modified team sports
- Develop social skills, team work & confidence
- Play sports without giving up your weekend

@JACK MAY PARK, ATHERTON SS & YUNGABURRA SS



FITNESS CLASSES AT THE GYM

- Ages 5+
- KidFit Classes
- TeenFit Classes
- Girls Only Classes
- Beginners through to advanced classes

@ SIX DEGREES GYM & ASHLEY CUPITT BOXING ACADEMY



PH GRAHAM / KRISTINA
0438 642 498

LEARN MORE

FLICKSA.COM.AU

sports & recreation 2026 guide



Malanda Hornets Football Club
malandasoccerclub@gmail.com
FB: Malanda Hornets Football Club

Mareeba United Football Club
0448 931 384 | secretary@mareebabulls.com

THEATRE & THE ARTS

At The Art Garage

20 Eacham Road, Yungaburra
After school classes, NDIS art sessions, guest teachers, exhibitions and artist residencies
katie@atheartgarage.com.au

Atherton Performing Arts Inc.

APA Theatre, 6 Silo Road, Atherton.
Sign on youth theatre 4pm, Thu 29 Jan.

For enquiries, membership, community plays and musicals: athertonperformingarts@gmail.com
athertonperformingarts.com.au

Tableland Ukulele Group

Carinya Wellness Centre, 1 Mazlin Street, Atherton
1pm (1st & 3rd Saturdays each month). All welcome. tablelandukulelegroup@gmail.com

TOUCH FOOTBALL

Atherton Touch Football

Season Dates: Juniors: Term 1 and 4.
Senior Mens and Ladies: Term 1 and 2.
Senior Mixed: Term 3 and 4.
Sign-up: touchfootball.com.au
athertontouchfootball@gmail.com
FB: Atherton Touch Football

Mareeba Touch Football

office.mareebatouchfooty@gmail.com
FB: Mareeba Touch Association

Ravenshoe Touch Association

ravenshoetouch19@gmail.com
FB: Ravenshoe Touch Association

YOGA

Happy Feet Yoga

Strength, stretch, breathwork & meditation. Weekly classes at Tolga CWQ Hall, check socials for up-to-date details. All levels.

0407 171 537

FB: Happy Feet Yoga

ATHERTON BASKETBALL ASSOC. INC.
Indoor • All Weather • All Ages • All Welcome

Bounce into basketball! Whether you're brand new to the sport or coming back for another season, we'd love to have you on the court for our 2026 season!

We offer basketball for:

- Under 10, 12, 14, 16 & 19 - Girls & Boys
- Women's & Men's

- ✓ All games played indoors at Atherton State High School
- ✓ No experience necessary
- ✓ Friendly, inclusive, and community-focused
- ✓ A great way to stay active, learn skills, make friends & have fun

2026 Season starts 3rd February!
New & returning players welcome!

Come join our growing basketball community.

athertonbasketball.com | athertonbasketballassoc
info@athertonbasketball.com | groups/athertonbasketball

ATHERTON CURLEW JUNIOR GOLF
COME & TRY DAY
Sunday 8th February 2026
8 – 10 am

Age 5 -17 Boys & Girls

What to Bring:
Enclosed Shoe, Water Bottle & Sunscreen.

Atherton Junior Golf is part of the national MyGolf Program sponsor by Ripper GC.

To Register
Contact: Tom McEwan the Junior Coordinator
At
athertonjuniorgolf@outlook.com

Ages 3 to Adult
Jazz ~ Tap
Hip Hop ~ Lyrical
Contemporary
Ballet

Providing a quality foundation now so they can dream big into their future

in2dance.com.au 0447 916 200



The Dirt

Brewing a Horticultural Revolution: Coffee and the unique soils of the Atherton Tablelands

In the lush, rolling hills of the Atherton Tablelands, a quiet revolution is brewing—one cup at a time. Lucy Stocker, a passionate coffee grower, is leading the charge, transforming cattle pastures into thriving coffee plantations and inspiring a new generation of farmers to see their land in a different light.

From Cattle to Coffee: A New Vision for the Tablelands

Surrounded by traditional cattle farms, Lucy saw both a challenge and an opportunity. “It’s pretty hard to make a good living from cattle on smaller farms these days,” she explains, referencing the fluctuating beef prices and the region’s history of dairying and cattle farming. But Lucy’s vision was different. She recognized that the Tablelands’ unique topography, climate, and—most importantly—its volcanic basalt soils, could nurture something extraordinary: world-class coffee.

The Secret’s in the Soil

Lucy’s farm sits on the slopes of an extinct volcano, where rich basalt soils provide a fertile foundation for her 30,000 coffee trees. “We think the combination of our basalt soils, slopes, and high cloud cover gives the coffee very dense beans and lively characteristics. We chase red and dried fruit characteristics,” she says. These soils, similar to

those found in coffee regions like Cobán, Guatemala, are packed with minerals that contribute to the coffee’s unique flavour profile.

Lucy’s approach to soil health is scientific and tailored to her property’s needs. “I’ve been working on the soil health here, particularly the top of the hills – adding rock dust and gypsum where it’s needed and can flow on to the

'My goal with roasting is to keep it as light as possible so that our unique terroir and processing methods are maintained in the cup'.

slopes, rather than adding to where it isn’t needed. So, taking a scientific approach, I guess, rather than a standard practice.” She’s also trialled different ways to start the coffee trees, from no-till rows at ground level through to full-till mounds, comparing results to find what works best for her land. “We’re still experimenting

with practices like this, and harvesting begins from the third or fourth year when the trees are tall enough, so knowing which method is best takes time. We harvest for six weeks around October, and I try to wait for the first



Lucy Stocker



Coffee beans

storms for flower generation – working with the seasons – that’s a different way from a lot of coffee farms.”

Sustainability at the Core

Sustainability isn’t just a buzzword at Crater Mountain.

From solar-powered water pumps to gravity-fed irrigation and minimal chemical use, every decision is made with the environment in mind. “We use, adapt, and re-use just about everything on the farm,” Lucy says proudly. The cost of infrastructure and equipment was an initial challenge, so Lucy bought all her equipment second-hand and converted slashers to side-throwing slashers so the grass could mulch and feed the 40km of trees. “Keeping it affordable to manage and using what we already have are important considerations.”

A Family of Innovators

Lucy isn’t alone in her quest. Her Dad was a renowned tropical forests scientist, and her husband, James, is the driving force of the farm’s technology and data systems. James and Lucy firmly believe in harnessing data gathered from experimentation to optimise their crop and coffee processing.

From Bean to Cup: Crafting Specialty Coffee

At Crater Mountain, coffee is more than a crop – it’s a craft. Lucy experiments with different varieties, focusing on Bourbon and Catuai, and employs innovative processing methods like inoculated honey and long-fermented naturals. “My goal with roasting is to keep it as light as possible so that our unique terroir and processing methods are maintained in the cup,” she explains. Her favourite brew? “A natural process black filtered coffee!”

Advice for Aspiring Farmers

Lucy’s advice for others interested in transitioning to environmentally centred practices is practical and encouraging. “The Hort360 Barrier Reef Certification audit helped me to think about procedures a bit more, which is something we farmers often don’t do. Systems

and processes can help lock in sustainable practices.”

She recommends proper soil preparation, planting legumes, and setting up the land before planting trees.

“Your use of fertilisers can be minimal. We don’t need to

use insecticides here in Australia for coffee yet, so that’s one thing we don’t need to worry about. Weed control can be a problem, so plan to invest time or other solutions there. Fungus can be a problem, but if you have good, strong trees, it isn’t too much of an issue.”

“We use, adapt, and re-use just about everything on the farm,”

Looking Ahead

Despite the challenges – high labour costs, climate variability, and the need for constant innovation – Lucy remains optimistic. “Continue to innovate with unique processing methods, a focus on coffee drying, new tree varieties and make more amazing coffee,” she says, outlining her vision for the future.

As the Atherton Tablelands continue to evolve, Lucy’s story is proof that with the right soil, climate, and a spirit of innovation, even the most traditional landscapes can yield something truly remarkable.

You can explore the work and products of Crater Mountain Coffee on their Facebook page via [cratermountain.com.au](https://www.facebook.com/cratermountain).



CRATER MOUNTAIN



ATHERTON FOOD CO-OP
organic · biodynamic · local
“Where good food doesn’t cost the Earth.”

Organic Groceries, Fruit & Veg
Fresh & Affordable
Local & Eco-Friendly Products

***Not-for-profit, member owned**
***Discounts for members & seniors**

7E Herberton Road, Atherton Ph. 4091 1268
Open: Mon-Fri 9am - 5.30pm Sat 9am-12pm

Everyone Welcome!



Tales of the Tablelands

Justine Bracegirdle shares **Katie's Story:** Connecting Community on the Tablelands

Connection has often been described as an “exchange of humanity” – a fundamental human need that enriches lives and offers a sense of purpose. For many people, though – particularly those living in regional and remote communities – forging genuine connection can be challenging. For those with lived experience of disability, that challenge may be even greater. But one inspiring Tablelands woman is working to change that.

Born in Townsville, Katie was the youngest of five. Her early years were marked by unimaginable loss, when her older sister tragically drowned as Katie was just learning to walk, while three other siblings had passed away as babies from various causes.

Katie herself was born with a cleft palate, a hole in her heart, hearing issues, and other difficulties. In Katie's own words, doctors warned she “wouldn't last a day”, but instead, she has spent 47 years proving them wrong.

After graduating high school, Katie moved to Darwin aged 19, where her mother Kirsty took on a role as General Manager of the Darwin Theatre Company. The move

opened new doors for both women, and Katie began making new friends and branching out. She even enrolled in a librarian technician course where she found herself thriving, until the time came to move to Brisbane.

“I was surprisingly good at cataloguing, and suddenly I couldn't do that,” she recalls, of being unable to continue the course.

In her late thirties, Katie's hearing deteriorated suddenly and rapidly, leaving her functionally deaf – a period she describes as one of deep isolation

In her late thirties, Katie's hearing deteriorated suddenly and rapidly, leaving her functionally deaf – a period she describes as one of deep isolation in which she relied almost entirely on her ‘live transcribe’ phone app to hear others. Remarkably, she maintained her sense of independence.

Finally, in 2023, Katie received a successful cochlear implant and set about ‘relearning’ how to hear. Her rapid recovery impressed doctors, but her mother Kirsty credits Katie's determination and daily practice.

Prior to that – just before Covid hit – Katie and her mother relocated to Atherton, gradually becoming part of the



Katie loves craft and needlework, often a helpful conversation starter.



Katie with her mother Kirsty (pictured left).



Katie with her beloved dog Bingo, is a passionate road safety advocate.

social fabric of the Tablelands. In fact, you've probably spotted Katie cycling around town with Bingo, her devoted dog, tucked into the bike trailer behind her. A committed advocate for safer cycling, Katie brings the same passion to her involvement with FNQ Connect – a community-led initiative focused on improving connection between people and services across Far North Queensland.

Just recently, Katie featured in a video for the initiative, recognised as embodying everything that FNQ Connect is about – that is, living one's best life regardless of circumstance or postcode.

It's the same positive attitude that sees Katie attend regular craft classes as an avid needlework enthusiast. Fiercely independent and endlessly curious, she has learned some sign language and is even fluent in French – attending weekly sessions at the Alliance Française d'Atherton.

Yet despite her outgoing nature and sharp sense of humour, connection does not always come easily for Katie, with her hearing loss continuing to present barriers, particularly when interacting with strangers. One of her biggest dislikes is interactions with shop assistants and even doctors, who talk to her mother or companion while ignoring her entirely.

"It is very rude and ungracious behaviour," Katie explains.

"It's about meeting us and helping us to feel like everyone else... that difference is okay,"

It's one of the reasons she makes a point of taking her needlework projects with her to events, using them as a 'conversation starter'.

"Put me in a group and I'm at an immediate disadvantage because it is virtually impossible to hear and follow conversations," she explains.

At a recent FNQ Connect 'community conversation' event in Atherton, Katie shared a dream close to her heart: establishing a Human Library for the Tablelands – a concept originating in Denmark, where people can 'borrow' a person rather than a book – and hear their story first-hand within an informal environment.

Katie believes the program would help to broaden the local community's understanding of different types of people within the Tablelands – everyone from those experiencing disability to veterans – while offering a platform for storytelling without judgment.

"It's about meeting us and helping us to feel like everyone else... that difference is okay," Katie explains.

To learn more about the FNQ Connect initiative and have your say, visit www.fnqconnect.org.au





January & February calendar highlights

Please be advised that event details are subject to change. Confirm details with organisers prior to event.

<p>THURSDAY 01 JAN</p>	<p>More events are added each week! Follow What's On Tablelands on social media to stay up-to-date.</p> <p>Art Exhibition – Miracles By Amanda Feher Multimedia exhibition sharing a local artist's personal journey through IVF, egg donation, and the creation of her family. Tableland Regional Gallery On display until 17 January FREE ENTRY</p> <p>Art Exhibition – Earth Poems Wood-fired ceramics by Jean McMaster Old Post Office Gallery On display until 24 January FREE ENTRY</p> <p>Photo Exhibition – Local People: The Third Series Portraits of Tablelands locals by the Songrivers Photographers Foyer Gallery On display until 20 February FREE ENTRY</p>	<p>SUNDAY 11 JAN</p>	<p>Chickens with Linda Bates Ceramic Workshop 9am-12pm 11th & 25th Jan (2-day workshop, held 2 weeks apart) Ravenshoe Mountain Institute Tickets on Eventbrite \$35</p>
<p>FRIDAY 16 JAN</p>	<p>School Savvy Pop-Up Shop By Centacare FNQ Support to help ensure local families in need can access essential school supplies 11am-2pm VPG 5 Comet Ave, Atherton</p>	<p>SUNDAY 18 JAN</p>	<p>Anthropomorphic Animals Watercolour Workshop with Jo Bingham 10am-1:30pm Old Post Office Gallery Tickets on Eventbrite \$25</p>
<p>SATURDAY 10 JAN</p>	<p>Tiny Villages with Linda Bates Ceramic Workshop 9am-12pm 10th & 24th Jan (2-day workshop, held 2 weeks apart) Old Post Office Gallery Tickets on Eventbrite \$35</p>	<p>TUESDAY 20 JAN</p>	<p>School Savvy Pop-Up Shop by Centacare FNQ Support to help ensure local families in need can access essential school supplies Mareeba Sports Hall 11am-2pm</p> <p>Art Exhibition – Glimpses by Tim Ellis Cinematic paintings that reveal vivid glimpses of life in rural Far North Queensland. Tableland Regional Gallery FREE ENTRY</p>

ENROL NOW

★ **PREP – YEAR 6** ★

Leadership Opportunities
Small Learning Environment, Caring Staff
Hands-On, Individualised Learning
Only 10min from Malanda
Phone 4096 8135 to enrol or to book a tour!



**BUTCHERS CREEK
STATE SCHOOL**
I am Respectful • I am a Learner • I am Safe



Strive as One



DID YOU KNOW?

Pensioners and Veterans are able to receive **FREE*** hearing services from **AUDIOHEALTH** including hearing aids?!

CALL 4091 1689

TO CHECK YOUR ELIGIBILITY

*Subject to Conditions & Eligibility



AUDIOHEALTH
hear well, live well

125 Grafton St CAIRNS | 11/2-4 Stanton Rd SMITHFIELD | 3/3 Cook Street ATHERTON
CAIRNS | INNISFAIL | ATHERTON | PORT DOUGLAS | MAREEBA | SMITHFIELD

SUNDAY 25 JAN	Gel Plate Mono-Printing with Hanna Wood A hands-on workshop introducing gel plate monotype 10am-1:30pm Old Post Office Gallery Tickets on Eventbrite \$25
MONDAY 26 JAN	Australia Day – keep an eye on our social media for updated event listings
FRIDAY 30 JAN	Dreams – The Fleetwood Mac & Stevie Nicks Tribute Show Atherton Hotel 8pm \$37.75 – Tickets from Oztix
SATURDAY 14 FEB	Valentine's Day – keep an eye on our social media for updated event listings Valentine's Day Cent Sale Ravenshoe QCWA Doors open 8:30am, first call 10am Ravenshoe Town Hall \$5 entry rsvp.online/b5adaj

Don't miss your opportunity to advertise in the next issue of What's On Tablelands!

Our **Home & Garden Issue** will be out in March!

Advertising deadline is **approaching!**

Hurry! Don't miss out!

Contact us today: info@whatsontablelands.com.au

save the date

MARCH

8 International Women's Day

APRIL

24-26 Rock & Blues Festival, Undara

MAY

3 Mother's Day Art & Craft Fair, Atherton Showgrounds

8-10 Great Wheelbarrow Race

30-31 Pioneer Day, Historic Village Herberton

JUNE

26-28 Malanda Show

29-30 Atherton Show

JULY

11-12 Mareeba Rodeo

AUGUST

* Events Coming

SEPTEMBER

6 Spring Art & Craft Fair, Atherton Showgrounds

OCTOBER

8-11 Savannah in the Round

10 Malanda Bullride

23-25 Tablelands Folk Festival, Yungaburra

31 Halloween, Malanda

NOVEMBER

TBC Malanda Christmas Festival, Malanda

DECEMBER

5 Carols by Candlelight, Atherton Showgrounds



* Dates are subject to change without notice. Please confirm event details with organisers prior to event.

Have an event planned for 2026?



Add it to our save the date today!

info@whatsontablelands.com.au

YUNGABURRA BOWLS CLUB
Friendly bowls in the heart of Yungaburra village!



Mixed Social Games
Wednesdays & Saturdays at 1pm
Sign Up Outside the Clubhouse

Club Open Fridays
4pm - 7pm for Drinks & Roll Ups

Cedar Street, Yungaburra
Phone for bookings and info: 40953596

what's happening, when & where!



Visit our online calendar at
www.whatsontablelands.com.au

HEALTH • WELLBEING • SPORT

Atherton parkrun – 7am (Sat)

Cnr Herberton Rd & Weaver St, Atherton.
0409 958 129. facebook.com/athertonparkrun

Awareness Through Movement (Feldenkrais)

6:15pm (Tue), online, 1:30pm & 5:30pm (Wed),
8:45am (Thu). Malanda Men's Shed Hall, Mary St,
Malanda \$15. Suits all levels of fitness.
Grace 0428 451 679

Indoor Bowls Atherton – 8:30am (Thu)

Masonic Hall, Golf Links Rd, Atherton. 4091 1381

Meditation & Discussion – 2pm (1st Sun of the month)

Meditation, followed by discussion on a
spiritual theme. Free. 4095 4689

Pickleball – 4:45pm (Tue), 6pm (Thu), 8:30am (Sun)

Malanda High School Hall. \$5 per session.
Equipment provided. Frances 0419 792 786

QiGong Halloran's Hill – 9.30am (Thu)

A U3A class. Lesley 0447 825 554

Sound Meditation – 6pm (every 2nd Wed of the month)

@ CWA Malanda. Debbie 0427 559 142
FB: [debbiesavagetherapies](https://facebook.com/debbiesavagetherapies)

Tableland Bush Walking Club – (every 2nd Wed & Sun)

New Members welcome. View program
online: tablelandsbushwalking.org

Tableland Dog Obedience Club Dog Training Classes

– 6pm (Wed) @ 44 Mabel St, Atherton.
Enrolments 1st Wed of the month. Check FB or
tablelanddogobedience@gmail.com

Taekwondo/Self Defence – 4pm & 5:45pm

(Tue & Thu) Merriland Hall, Atherton Showgrounds.
Annette 0427 581 482

Tai Chi Yungaburra – 4:30pm (Mon),

Yungaburra Community Club, 8:30am (Fri).
Yungaburra Rec Shed. Maria 0414 302 759

Walking Group – 9am (Mon/Wed/Fri) ECHO,

13 Eacham Pl, Malanda. Free. All welcome.
4096 6634

Yoga with Gillian, Tolga – 5:45pm-7:15pm (Tue)

Tolga CWA Hall, opp. Post Office. All levels, Hatha
incorporating stretch, strength, breathwork and
meditation. Gillian 0407 171 537
FB: HappyFeetYoga

Yoga/Qigong with Lyndel – Malanda, 5pm (Tue)

Uniting Church Hall, 10am (Wed) Chair Yoga,
CWA Hall. \$15 per class. Lyndel 0488 559 281

Yoga with Carina

9am (Wed) Stretch Yoga Seniors Class @ CWA
Millaa Millaa, \$5 per class. 9am (Fri). General class
\$10. 82 Sheehan Rd, Tarzali. 0402 208 377

Zumba Gold – 9am (Mon), 9am (Fri) @ Tolga

CWA Hall. Dance fitness suitable for beginners &
older participants. \$11 class. Ann 0418 826 168 or
anniemc9@gmail.com

SOCIAL • MUSIC • DANCE

Bingo – 9:15am (Tue), doors open at 8:45am.

Atherton International Club. Proceeds go to
Atherton Hospital FNQHF. 4091 4970

Bingo – 9:30am-12pm (Wed), doors open at

8:30am. Yungaburra Hotel Ballroom. Proceeds
go to Yungaburra Beautification.

Bingo – 9am (Sun) Anthill Motel, 79 Byrnes St,

Mareeba. Proceeds go to Friends of Mareeba
Hospital. 0439 754 380

Learn to Play Canasta – 12pm-4pm (Mon)

Have a coffee and play with friends. Atherton
International Club. Free.

Malanda Bridge Club – 1pm (Mon & Wed).

Bridge sessions at Malanda Bowls Club. All visitors
and new players welcome. 0428 775 671

Tableland Bridge Club – 9am (Thu) & 1pm (Sat)

Room 14, Community Centre, 42 Mabel
St, Atherton. Visitors and new players welcome,
lessons provided. 0428 913 512

Tableland Country Music Club – Last Sun of the month.

Different venues, contact for details,
free entry, new entertainers welcome.
0400 885 586

Tableland Music Lovers – 2-6pm (Sun)

Fortnightly. Open mic night, Grainger Lane,
Atherton. Everyone welcome. \$5 entry fee.
FB: [tablelandsmusiclovers](https://facebook.com/tablelandsmusiclovers)

Tableland Social Dancers – 6:15pm Lesson,

7pm Social Dancing (Wed). Merrilands Hall,
Atherton. Learn many styles of ballroom sequence
dancing. \$5, join the fun. Annette 0488 954 202

Tableland Ukulele Group – 1pm (1st & 3rd

Sat of the month), Carinya Wellness Centre,
1 Mazlin St, Atherton. All welcome.
tablelandukulelegroup@gmail.com

YBI Concert – 4pm (2nd Sun of the month), live

music at the Yungaburra Rotunda (Yungaburra
Hotel if wet). Free event. FB: [YungaburraRotunda](https://facebook.com/YungaburraRotunda)

WE ARE FULL!

Contact us to join the waitlist

local business directory

Support local, shop local!

Massage Therapist

Janelle Moses

0418 889 773

Shop 2, Jack Street

Business Centre ATHERTON



AEO – Annie's Essential Oils

Always Empowering Others

0407 982 002

Healing Touch

Raindrop Technique

Essential Oils

Sound Healing

Hot Stone Massage

Workshops

Malanda Wellbeing Centre
19 James St, Malanda 4885
Email: aeo.taichi@gmail.com



Pool available, safe and secure place to
swim your dog, for fun or therapy!

TRACE'S TRAINING

Helping dogs and their owners
in FNQ for over 30 years, and
I come to you!



0458 965 919

traces.training1@gmail.com

tracetraining.com.au



This ad space could be yours!

Contact Mia to chat about advertising
here in our next issue:

info@whatsontablelands.com.au

Birdwing Therapies

Accredited Mental Health & Expressive
Therapy Social Work Practitioners

Psychological & Play-based
Therapy & Assessments

Medicare Rebates Available
NDIS provider

19 James St. Malanda Ph: 0475 618 756
E: info@birdwingtherapies.com.au



The Spotted Quoll Nursery

Visit Alyson & Kath at
1914 Chewko Road, Walkamin

open 7 days a week, 9am - 3pm

0439 371 399

info@spottedquollnursery.com.au

COMMUNITY

Alcoholics Anonymous – 7:30pm (Mon) CWA Hall, Wilkes St, Mareeba. 6:30pm (Tue) CWA Hall, Malanda. 7pm (Sat) CWA Hall, Jack St, Atherton. Support group for people wanting to stop drinking. 0419 757 035

Alliance Française d'Atherton – 4-6:30pm (Tue) & 4:30-6:45pm (Thu). Atherton Community Centre, 42 Mabel St. French conversation and language classes. French themed events. alliancefrancaise.atherton@gmail.com 0407 708 435

Atherton Tableland Mineral & Lapidary Club 5:30-9:30pm (Mon), 8-4pm (Wed), 8am-1pm (Sat). Racecourse Rd, Tolga. 0417 746 630 atmlc679@gmail.com

Board/Cards Games Group – 9am (Thu), ECHO, 13 Eacham Place, Malanda. All welcome. Free. 4096 6634

Family Drug Support – 5:30-7:30pm (4th Thu of month), Atherton Community Hall, Jack St, Atherton. Shammah 0490 799 180

FNQ Community Exchange (Tablelands LETS) – Meet regularly to barter and exchange skills and knowledge. Find out more at fnqces.org

Highland Restorers Club – 7-9am (Sun), Yungaburra Pit Stop Servo. Vintage and classic motorcycles and cars. Don 0417 707 693

Atherton Lions Club – 6pm for a 6:30pm start. (2nd & 4th Tue of the month). Atherton International Club. 0419 547 146

Malanda Lions Club – 6:30pm (1st & 3rd Wed of the month). The Top Rail, Malanda. 0456 368 245

Mareeba Lions Club – 6:30pm (1st & 3rd Tue of the month). Mareeba Leagues Club. 0488 591 318

MAS Choir – 3:30-4:30pm (Thu). Accompanied, non-audition group performing several times a year around Herberton. Free to participate. Chapel at Herberton Historic Village. Mary 0418 182 197

Tolga Lions Club – 7pm (3rd Tue of the month). Tolga Tennis Courts Clubhouse. 0459 088 059

Men's Shed Atherton – 8am-12pm (Mon-Fri). 1 Railway Ln, Atherton. 0403 560 440

Men's Shed Herberton – 7am-2pm (Tue & Thu). Herberton Railway Station, John St, Herberton. Judy 0411 279 152

Men's Shed Malanda – 9am-12pm (Mon, Wed, Fri). 21-23 Mary St, Malanda. Clem 0457 885 737 or Mike 0436 360 044

Men's Shed Mareeba – 8:30am-12pm (Mon, Wed, Thu). 26 Lloyd St, Mareeba. 0499 229 986

Men's Shed Ravenshoe – 9am-3pm (Wed-Fri). 52-56 Herbert St, Ravenshoe. G.Rae 0467 960 362

Men's Shed Yungaburra – 2-6pm (Tue & Thu). Yungaburra Memorial Shed, 7 Barrine Rd. Jeff 0448 168 674

QCWA Malanda Craft Group – 9am (Thu) Catherine St, Malanda. Morning tea provided. All welcome. Daune 0458 499 129

QCWA Ravenshoe – 12pm (every 1st Tue of the month) 15 Herbert St, Ravenshoe. ravenshoebranch@qcwa.org.au

Rotary Club of Atherton – 6pm (every 2nd & 4th Tue of the month), Atherton International Club. 0448 750 353

Seniors Group – Meet twice monthly. Various social activities. Singles and couples welcome. Heather 0458 316 081

Soroptomist International – 5:30pm (2nd & 4th Tue of the month), Atherton Hotel, Main St, Atherton. Elspeth 0418 728 614

SWELL (Senior Women Enjoying Later Life) 9:30am (Fri) Baptist Church Hall, Cnr Gibson and Lloyd St, Atherton. Guest speakers, excursions, laughter. Rene 0400 675 729

The Grove Activities Centre – 9am-2pm (weekdays), 11 Grove St, Atherton. See calendar: tclink.org.au/thegrove/

U3A Atherton Tablelands – 9:30am (Mon). Room 22, Community Centre, 42 Mabel St, Atherton. Check website for event details. 0400 660 026 or athtablends.u3anet.org.au

Women's Survivor Group – Meet fortnightly at Atherton CWA. For women of all ages impacted by violence or harm. Coffee, connection, craft. Free. Tablelands Sexual Assault Service 4091 4036

Women's Welcome & Well-being – 9am-12pm (Tue) Girl Guides Hall, Robert St, Atherton. Different activities each week. Sue 0400 885 586



INGREDIENTS

1.5kg chicken thighs	1½ cans coconut milk
300g broccoli	
300g cauliflower	1 teaspoon curry powder
½ an onion, finely chopped	50g zucchini, chopped
2 garlic cloves, minced	

Recipe of the month

Angela Nason's Coconut Curry Chicken

METHOD

1. Sauté the aromatics – Heat coconut oil in a large pot, then fry the chopped onion and garlic until fragrant.
2. Sear the chicken – Slice chicken thighs into thin strips & sear until lightly browned.
3. Create the base – Mix curry powder into the coconut milk & pour over the chicken, onion and garlic.
4. Add the veggies – Add broccoli, cauliflower and zucchini. Cover and simmer on low for 45 minutes.
5. Final touch – Uncover and simmer for another 15 minutes to thicken and deepen the flavour.

Recipe of the month courtesy of Tablelands to Tabletop



what's happening, when & where!



ART • CRAFT

Handwork Craft Group – 9am-12pm (Tue)
Old Post Office, Herberton Rd, Atherton.
Karen 0427 698 267

Mareeba Craft on the Fringe – 9:30am-12pm
(Tue) Centenary Park, Byrnes St, Mareeba.
pederulla@hotmail.com

Mareeba Art Society – 10am-2pm (daily)
MAS Gallery 58 and shop open. 345b Byrnes St,
Mareeba. 0415 852 744

–9am-12pm (Mon) Painters in the Park
–9am-12pm (Tue) Craft & Cuppa, Craft Share
–9:30am-12pm (3rd Sun of the month)
–Beginners Painting 5pm (every 3rd Tue of the
month). MAS monthly meeting, all welcome.

Mend Make Create – 9am-12pm (1st Sat of the
month), CWA Hall, Kehoe Pl, Yungaburra. Uncover
the secrets of sewing with expert tips! By donation.
0438 572 207 or vberry@westnet.com.au

Social Stamping Papercraft – 1-4pm (4th
Sat of the month, exc. Dec and Jan) Venue TBC.
\$5pp, BYO projects. Tea and coffee provided.
RSVP please. Lauren 0408 913 677

NATURE • PLANTS

Atherton Seedsavers & Gardening Group –
Meet every 2nd month, various locations.
athseedsavers@urbanfox.com.au

Let's Grow Julatten & Molloy Garden Club –
8am (Tues), Ahoy Mt. Molloy Coffee Shop or a
member's garden.
Ying Tee: eatgrowlove75@gmail.com

Malanda Community Garden – 9am (Mon),
ECHO, 13 Eacham Place, Malanda. All welcome.
Free. 4096 6634

Millaa Millaa Garden Group – 8am (Mon),
Meet to maintain gardens and finish at 10am for
coffee/cake at Rumours Cafe.

Tableland Branch of Native Plants Qld
– 7:30pm (4th Wed of the month), Tolga CWA
Hall. Bush excursion following Sun of the month.
Peter 0418 719 748 or Chris 4091 3082

**TREAT Rainforest Tree Nursery &
Revegetation** – 8-11am (Fri) QPWS Nursery,
McLeish Rd. Lake Eacham.

Yungaburra Landcare – 8-10am (Fri), Allumbah
entrance, Penda St. Morning tea afterwards.
David 0400 005 085 or Paul 0419 716 196

Tableland Garden Group – 2pm (2nd Sat of the
month), tablelandgardengroup@outlook.com

KIDS • YOUTH

Atherton Basketball Assoc – from 4pm
(Tue, during school terms). Atherton State High
School Hall, Maunds Rd, Atherton.
athertonbasketballassociation@gmail.com

Atherton District Girl Guides – from 3:30pm
(Mon during school terms), ages 5+, Girl Guide Hall,
Robert St, Atherton. 0428 914 758

Atherton Junior Golf – 8-11:30am (Sun)
competition day, 4-5:15pm (Wed & Thu) practice.
Ages 5-17yrs, Atherton Golf Club.
athertonjuniorgolf@outlook.com
FB/web: atherton golf club

Atherton Mainly Music – 9:30-11am (Mon)
Atherton Baptist Church Hall, Gibson St. Early
childhood educational playtime and activities.
Morning tea. \$6 per family. Coral 0414 380 263

Tablelands Home Education – Gatherings for
homeschooling families (every Thu). Times and
locations vary. FB: Tablelands Home Education
tablelandshomeed@gmail.com

Early Years Place (EYP) Playgroup –
9:30-11:30am Tues, Wed (fortnightly) & Thurs.
Ages 0-8, all welcome. Dimbulah Community
Centre, 16C Raleigh St, Dimbulah. FREE. Find us on
FB or 4093 5444

local business directory

Support local, shop local!

Mareeba Leagues Club



'Supporting our Local Community'

OPEN 7 DAYS



OPEN FROM 10AM
DAILY LUNCH 11.30AM - 2PM

DINNER
SUN - WED FROM 6PM
THURS - SAT FROM 5.30PM

ALL DAY DINING
FRIDAY & SATURDAY

DOYLE STREET, MAREEBA

4092 2922



HIGH POINT MEDIA

Social media management
for local businesses

Content, posting & strategy

Atherton Tablelands | 0405 525 000

CROSS STITCH & QUILTING CORNER

Phone & mail orders available.
Hope to hear from you soon.

4096 5109

Rural No. 10 Hillcrest Rd MALANDA
(corner of Hillcrest Rd & Millaa Millaa-Malanda Rd)
cross-stitch-corner.com.au

SHE

SHE'S in HER
ELEMENT

Beauty, Body & Skincare
Head Spa
Wellbeing & Relaxation

2 Quinean Close,
Yungaburra
0408 327 658

DAY SPA

Aligned Wellbeing

Guided Breathwork Sessions
Group, 11 or on demand to release stress and deeply relax.

Personal Breathwork Coaching
Build simple breath habits to manage stress, anxiety & overwhelm
so you can feel more calm, grounded, and in control.

Breathwork & Reiki
A personal session to release stress and restore balance.
Leave feeling lighter, calmer, and more connected to yourself.

Atherton, Malanda, Tarzali, Online
arenda@alignedwellbeing.com.au



Soul Skin Alchemy

INTEGRATED BEAUTY

Experience the alchemy of mind, body,
& soul - where beauty & healing meet.

- Signature Facials
- Massage
- Advance Skin Treatments
- Intuitive Soul Healing
- Beauty & Waxing

(07) 4095 0167 | 22 James Street, Malanda | info@soulskinalchemy.au



Takeaway, Dine in, Catering
C!uten Free & Vegetarian Options

SILO SUSHI

Japanese & Asian Foods

Phone Orders Welcome!
4091 1769
3B Silo Central Shopping Centre
Atherton



Shop local at the businesses we love!



My Pantry

8 Main St, Atherton
4091 3714

mypantry.online

My Pantry, Your Pantry!
Homemade country food.
Take-away and bake at home.
Savouries, gluten free and sweets.
Freshly made or frozen ready meals.



Atherton Antiques

2 Tolga Rd, Atherton
4091 4455

We are retiring! It's the end of an era. We are looking forward to another chapter in our lives. No date until our stock is sold. Please drop in to catch a bargain before we close the doors. Thank you to all for your friendship and support over nearly 35 years.
Nick and Fran

**ATHERTON
ANTIQUES
&
AUSTRALIANA**



Pink Pineapple Eats

Shop 6, 34-36 James St, Malanda
4095 1316

Delicious menu, made fresh daily! Pizzas with loaded toppings, modern burger bar, southern fried chicken packs, specialty iced drinks, bubble tea, frappes, espresso & more. Locally owned & operated. Private & corporate catering available.



Uptown Music Atherton

7D Herberton Rd, Atherton
4091 2874

Back-to-school brass, woodwind, and string orchestral, music stands, books, and accessories!

The best little music shop in the mountains!



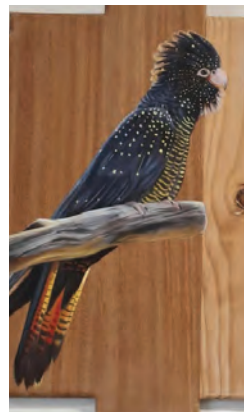
Our Wildest Dreams

31 Main St, Atherton
4001 2966

ourwildestdreams.com.au

Exclusive Australian Designers.

Unique Clothing, Gifts & Quality Leather Accessories.



Artistree Gallery

14 Kehoe Pl, Yungaburra
4095 3269

artistreegallery.com.au

High quality, beautiful, sustainable, handcrafted items from a diverse range of local artists.



Cowgirl Country

33B Gillies Range Rd, Yungaburra
0400 801 508

cowgirlcountry.com.au

Unique, one-off creations. Cowhides, exotic hides, country themed toys, clothing, décor, gifts and more.



Winter & Mann

2/30 Cedar St, Yungaburra
0431 200 684

winterandmann.com.au

A selection of premium Australian fashion, art, and gourmet food. Showcasing exceptional creators from across the country and our local region. Open 7 days.





Faces of the Tablelands

Malanda Christmas Festival, Malanda, 20 November 2025

Photography by Malanda Chamber of Commerce



Edible Art. Yes! We Custom Create!

Bring on the Local Lovin'!

coffeeworks.com.au



Markets

On the Tablelands



Archer Creek Markets - Ravenshoe Lions Club

2nd Sunday of the month
7am-12noon
Archer Creek Rest Area,
Kennedy Highway

Atherton Markets

1st Saturday of the month
6am-12noon
Lutheran Church, Golf Links Drv

Atherton Undercover Markets - Atherton Lions Club

2nd Sunday of the month
7am-12noon
Atherton Showgrounds

Dimbulah QCWA Markets

3rd Saturday of the month
8am-12noon
Dimbulah QCWA Grounds

Julatten Markets

3rd Sunday of the month
(Apr-Dec), 2pm-5pm
Geraghty Park Hall

Koah Monthly Market

1st Saturday of the month
8am-12noon
Koah Hall, 322 Koah Road

Kuranda Community Market

2nd Sunday of the month
9am-1pm (closed Jan, Feb, Mar)
Kuranda Amphitheatre

Kuranda Markets

Original Rainforest Market:
Daily, 10am-3pm

Kuranda Heritage Markets:
Wed-Sun, 10am-3:30pm

Malanda Markets

- Malanda Lions Club
3rd Saturday of the month
7am-12noon
Malanda Showgrounds

Mareeba Markets

- Mareeba Lions Club
Every 2nd & 5th Saturday
of the month, 7am-12:30pm
Centenary Park

Mt Molloy Markets

1st Saturday of the month
(Mar-Dec), 8am-12noon
Fraser Road, Mt Molloy

Tolga Markets

1st Sunday of the month
7am-12noon
Morrow Park Racecourse

Tumoulin Country Markets

4th Sunday of the month
(Jan-Nov), 8am-1pm
Tumoulin Railway Station

Wondecla Markets

3rd Sunday of the month
7am-12noon
Wondecla Sports Ground

Yungaburra Markets

4th Saturday of the month
7:30am-12:30pm
Bruce Jones Market Grounds

Contact the market organisers for more information



- Gifts for Her • Gifts for Him • Children's Toys
- Home Decor • Souvenirs

Open 7 days ♣ Found inside the Mareeba
Heritage Centre, 345 Byrnes Street, Mareeba

www.mareebaheritagecentre.com.au



FARMHOUSE Café

OPEN DAILY 10AM-4PM
(Closed February. Check website for exceptions)

Home of the finest Ice Cream, Cheese & Yoghurt

Lunch • Cake • Coffee • Devonshire Tea



254 Brooks Rd, Millaa Millaa | 07 4097 2400 | mungallicreekdairy.com.au



Mortgage by Design

- Investment purchases
- First home buyers
- Personalised strategy
- Refinance
- Free service
- Ongoing support

"Making dreams a reality"



SCAN ME

Sasha Gill

Loan Designer

0432 359 121

sasha@mortgagebydesign.com.au

www.mortgagebydesign.com.au



MALANDA MOVIES

01 Jan - 07 Jan

Avatar: Fire and Ash (M)
The SpongeBob Movie: Search
for SquarePants (PG)
Anaconda (M)

08 Jan - 14 Jan

Avatar: Fire and Ash (M)
The SpongeBob Movie: Search
for SquarePants (PG)
Anaconda (M)
The Pout-Pout Fish (PG)

15 Jan - 17 Jan

Pets on a Train (PG)
To Song Sung Blue (M)
The Pout-Pout Fish (PG)
Housemaid (M)

22 Jan - 01 Feb

To Song Sung Blue (M)
The Pout-Pout Fish (PG)
Housemaid (M)
Grand Prix (M)
28 Years Later (M)

January Movies

For session times, go to majestictheatre.com.au
or call the movie info line on 4096 5726

Majestic Theatre Malanda, 1 Eacham Place, Malanda

CHECK WEBSITE FOR SHOW TIMES

mareebadrivein.com.au

SLEEP OUT AFTER THE MOVIE



0475 162 040
5303 Kennedy Hwy
MAREEBA

CAFE ONSITE
Serving classic burgers,
snacks & drinks



Planning an event?



**BIRTHDAYS | ENGAGEMENTS
CORPORATE | WEDDINGS & MORE**

We have multiple functions spaces perfect for your occasion including our popular sunset deck.

Inquire today about having your function with us!

*Atherton International Club
60 Kennedy Hwy, Atherton
07 4091 4970*