

Sip & Dine

Guide 2026



Where to Eat Out on the Atherton Tablelands

Being blessed to reside in a “food bowl”, our region has an abundance of the very best of locally grown, farm-fresh ingredients. From locally sourced grass-fed beef, locally grown and roasted coffee, to biodynamic dairy goods and homemade treats, there is a fantastic selection of places to eat out or grab a drink on the Tablelands.

What's On is pleased to present you with our **Sip & Dine Guide** for 2026!

If you'd like your establishment included in the next What's On Sip & Dine Guide, email Mia at info@whatsontablelands.com.au

COFFEE WORKS

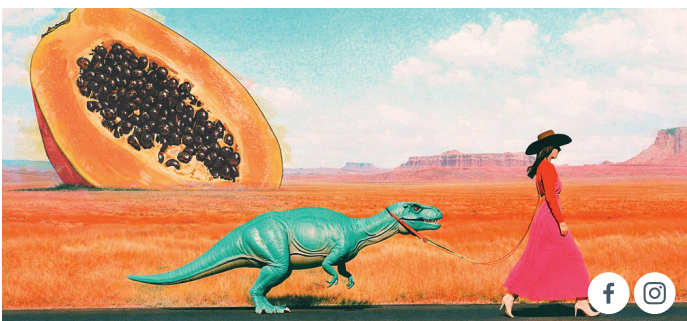


Est.1988. Boutique Roasters + Chocolatiers. Family Owned. Crafters of Feel Good. Join us. Join our Tribe!
COFFEE: Meet the Locals! Roasted by Us. Rated by You.
CHOCOLATE: Gift Delicious. Edible Art. Yes! We Custom Create.
LIQUEUR: Crafted Onsite. We Shout Liqueur Samples. Meet the Fleet!
TEA: Greens. Chais. Whites. Blacks. Fancys. Oolongs in Gourmet Stores.

1 Mareeba, Atherton, Cairns, Port Douglas, Townsville
coffeeworks.com.au



SKYBURY FARMS

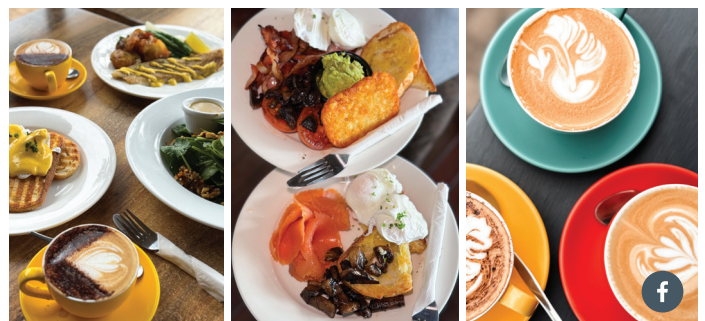


Skybury Farm offers a unique experience at Australia's oldest coffee plantation and leading producer of tropical red papaya. Enjoy a relaxed café setting with stunning views, paddock-to-plate dishes, farm-grown coffee and farmgate produce. Plantation tours begin in April, offering a behind-the-scenes look at farm life from planting to harvesting. Open weekdays 9am-4pm, Sat 8am-3pm (Sat opening 11 April).

2 136 Ivcevic Road, Paddys Green
4093 2194 | skybury.com.au



SAVANNAH CAFÉ



Savannah Café, located inside the Mareeba Heritage Museum, offers a setting like no other. Enjoy old-world charm as you sip a coffee or enjoy a meal all while looking over a historic backdrop. Our menu features fresh, flavourful meals made with ingredients we're proud of. We are open for breakfast and lunch Monday through Friday from 9am-4pm and weekends from 8am-4pm.

3 345 Byrnes Street, Mareeba
4092 1146 | savannahcafe.com.au



CHILLAGOE GALLERY 29



Head out west to Chillagoe Gallery 29 for the best barista-made coffee in the outback. Enjoy coffee on the go, in the garden, or bring your own picnic. Choose from a selection of delicious cakes and slices. Browse the store for quirky one-off gifts and local cut and polished marble.

4 29 Queen St, Chillagoe



MT UNCLE DISTILLERY



A leading Atherton Tablelands day-out destination, crafting award-winning rum, agave spirits, gin and whisky using local cane and estate-grown Blue Weber agave. Enjoy tasting paddles, cocktails and grazing boards in a relaxed setting. Roaming alpacas and an on-site RV retreat add to the experience, with Music at the Mount on the first Saturday of the month. Cellar door open Mon-Sun, 12-6pm.

5 1819 Chewko Road, Walkamin
4086 8008 | www.mtuncle.com



EVENTIDE HILLS DISTILLERY



Eventide Hills Distillery offers a relaxed distillery door experience, with 100% locally handcrafted spirits made right here in the region. Enjoy creative cocktails, local cheese boards and a welcoming, family-friendly atmosphere, with regular food trucks and live music adding to the experience. A great spot to unwind with friends. Open Wed-Thu 11am-5pm, Fri-Sat 11am-9pm, Sun 11am-6pm.

6 2-10 Arbouin Road, Tolga
4095 5841 | eventidehillsdistillery.com.au



BILLYCART BREWING CO.



A locally owned and independent brewery pouring a wide range of delicious small-batch craft beers. The relaxed taproom caters to both adventurous beer lovers and those simply chasing a cold one at the end of the day. Takeaway cans available, food vans, regular live music and trivia nights creating a relaxed and fun atmosphere all year round. Open Thu 12-8pm, Fri & Sat 12-9pm, Sun 12-8pm.

7 65 Tolga Road, Atherton
www.billycartbrewing.com.au



THE STATION CAFÉ



The Station Café is located in Atherton's Platypus Park precinct and invites patrons to dine inside railway carriages, presents a model railway for families to enjoy, and is dog friendly. Open Thu 8:30am-2pm, Fri-Sun 7am-2pm.

8 Atherton-Herberton Road, Atherton
0448 235 409



NICK'S RESTAURANT, BAR & PIZZERIA



This popular restaurant was started in 1986 by Nick and has continued to be a favourite for locals and tourists alike. Authentic European cuisine including al dente pastas, traditional pizza, steaks and more. Fully licensed bar, happy hour, dine-in or takeaway. Open Wed-Sun 4:30pm-8pm.

9 33 Gillies Range Road, Yungaburra
4095 3577 | nicksrestaurant.com.au



BURRA BAKEHOUSE



Established by two young local friends, Burra Bakehouse is a rustic artisan bakery in the heart of Yungaburra, celebrating quality ingredients and handcrafted pastries. From flaky croissants and seasonal danishes to hearty sourdough, pies and freshly made sandwiches, everything is baked fresh onsite daily with care. Enjoy our beautifully brewed coffee. Open Wed-Fri 6am-2pm, Sat-Sun 6am-12pm.

10 2 Quincan Close, Yungaburra



OUR PLACE RESTAURANT



Feel truly welcomed at Our Place as you are seated, served, and cooked for by the owners of this elegant restaurant. Relax in the cozy atmosphere and enjoy quality homestyle food made from fresh, local ingredients. Located in the heart of Yungaburra, this family-friendly restaurant is not to be missed. Open Fri-Mon from 12pm.

11 17 Eacham Road, Yungaburra
4095 2235 | ourplacrestaurant.net



THE GILLIES CAFE - BAR - DELI



Enjoy the beautiful views while the kitchen whips up a delicious meal or browse the Italian Delicatessen and Fine Foods Store where you can order a fresh Italian panini. Also offering catering and venue hire for private functions. Friday nights come alive with tapas, live music, cocktails and sunsets. Open daily 6am-3pm, Fri 5-10pm.

12 1200 Lake Barrine Road, Yungaburra
0409 720 461

The Gillies
CAFE - BAR - DELI

THE BIG PUB - 1911 RESTAURANT



1911 Restaurant serves up delicious and wholesome meals seven days a week with daily specials. They offer dine-in or takeaway, and a vegan/vegetarian menu. Pizzas are available for lunch and dinner. Breakfast 10am-12pm, Lunch 10am-2pm, Dinner Mon-Sun 5:30-8pm.

13 12-20 English Street, Malanda
4096 7720



PINK PINEAPPLE EATS MALANDA



A place to stop and brighten your day. Pause and play while you decide from a menu filled with choices. Ranging from housemade pizzas loaded with toppings, modern burgers, southern fried chicken or classic fish and chips. They offer a wide range of iced drinks ranging from frappes, bubble tea and milkshakes. Locally owned and operated, with catering available. Open Tue-Wed 3pm-7:30pm, Thu-Sat 11am-7:30pm.

14 34-36 James St, Malanda
4095 1316



MUNGALLI CREEK DAIRY



The "Out of the Whey" Farmhouse Café showcases Mungalli's award-winning Biodynamic milk, cheeses, yoghurt and ice-cream. A must-stop for lovers of fine food – graze on one of their delicious cheese or dessert platters, try their famous ploughman's lunch, scones with Jersey cream or an amazing cheesecake. Just 10 mins from Millaa Millaa Falls. BYO. Open daily 10am-4pm.

15 254 Brooks Road, Millaa Millaa
4097 2232 ext 1 | mungalliecreekdairy.com.au





3



4



5



7



10

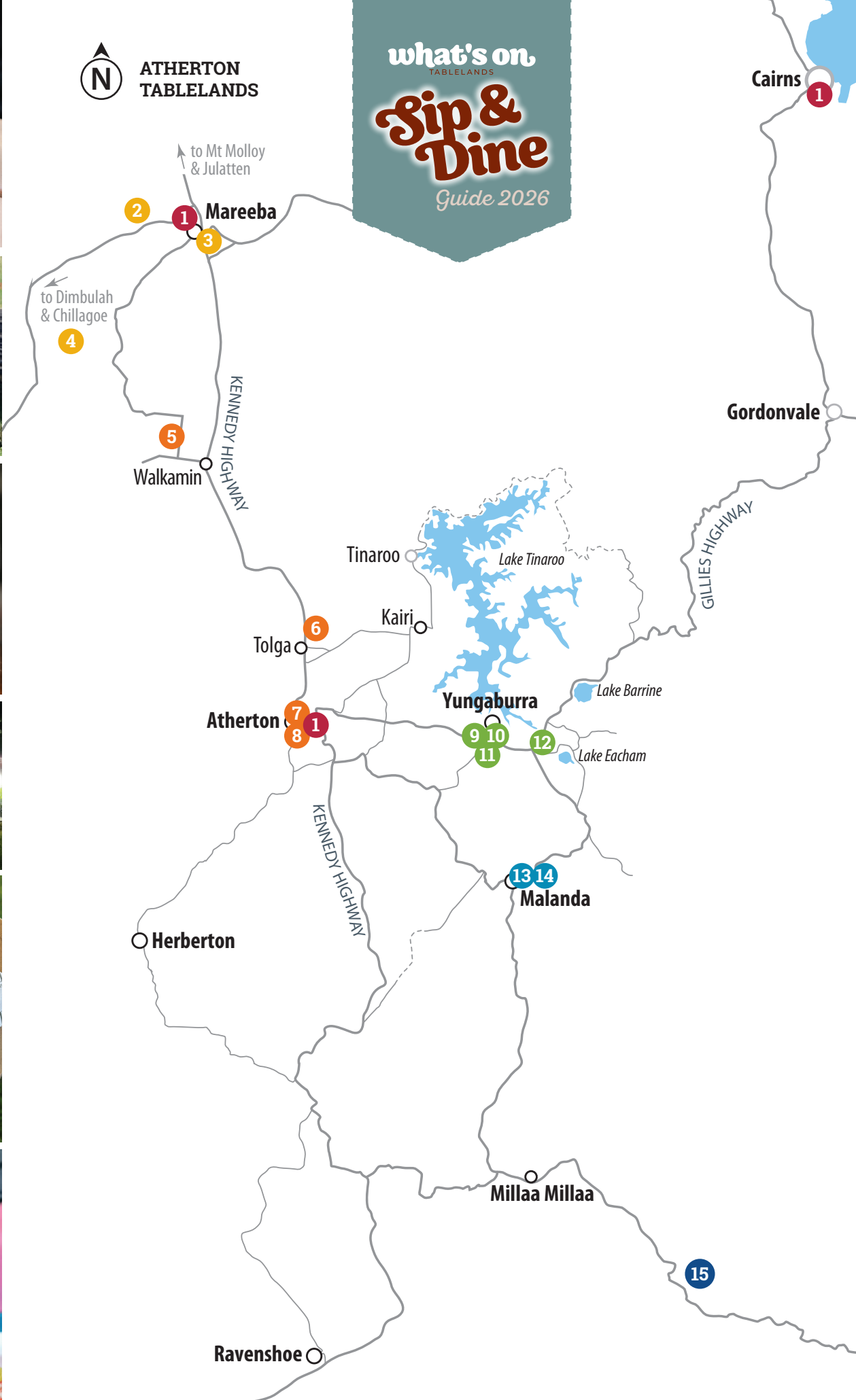


14



ATHERTON
TABLELANDS

what's on
TABLELANDS
Sip & Dine
Guide 2026



Whats On Tablelands



WhatsOnTablelands



whatsontablelands.com.au



0408 882 338



info@whatsontablelands.com.au