

what's on

TABLELANDS



A new chapter for Cowgirl Country

Sip & Dine Guide | The Dirt – Building a Manageable Garden | Picnics with Kids
Community Calendar | Event Highlights | Tales of the Tablelands | Markets



Cowgirl Country

**Bec Magro shares the new chapter for
Cowgirl Country**

Cowgirl Country may now be a well-known local store, but its beginnings were far more humble. What started as a small creative hobby, selling handmade pieces at local markets, has grown into a brand that proudly celebrates country living here on the Tablelands.

In the early days, I was creating handmade pieces and selling them at local markets under the name *Handmade by Bec*. I loved the creativity and the opportunity to meet people from across the Tablelands. At the time, I never imagined it would grow into a full-time business, but when I began working with cowhide products, the response was incredible and it quickly became clear that the idea had real potential.

As the business grew, I realised it needed a name and identity that truly reflected the country lifestyle I live and love. That's when *Cowgirl Country* was born, followed soon after by *Cowboy Country* and *Cowkid Country*, creating a brand that celebrates country living for the whole family.

My first shop opened in Mt Molloy, which was a big step from market stalls and something I was incredibly proud of. As the business continued to grow, I moved to Yungaburra, where Cowgirl Country became part of the community. I met so many wonderful people there and will always be grateful for the support from both locals and visitors who walked through the doors and supported my dream.

When the building was later sold and I had to move on, it was certainly challenging. But running a small business teaches you resilience and the importance of looking ahead. Now Cowgirl Country is beginning an exciting new chapter with the opening of our new store at 67 Main Street, Tolga on the 11th April. The new space will allow us to expand what we offer, including a custom hat bar and workshop area, alongside our range of cowhide pieces, country apparel and accessories.



"Cowgirl Country started as a simple hobby, but thanks to the support of the Tablelands community, it has grown into something far bigger than I ever imagined."

Bec, Gunner, and Dolly Pugton

My goal has always been to create a space where people can find something unique and feel connected to the country lifestyle.

I'm incredibly proud of how far Cowgirl Country has come and deeply grateful to the Tablelands community who have supported me every step of the way. I'm excited to welcome everyone into the new store and continue the journey right here on the Tablelands, and of course Dolly Pugton will be there to greet visitors too.

To keep up-to-date with what's happening at Cowgirl Country, visit cowgirlcountry.com.au or find them on Facebook.





April issue

www.whatsontablelands.com.au

Welcome to the April issue of What's On!



We're excited to welcome you to our April issue, featuring a stunning cover of Bec, Gunner, and local celebrity Dolly Pugton. On page 2, Bec shares

some exciting news about the next chapter for Cowgirl Country and their upcoming relocation.

This month also marks the release of our 2026 Sip & Dine Guide. The Tablelands is truly a foodie's haven and we're thrilled to share this handy pull-out guide with you – perfect to keep on hand when you're deciding where to eat, drink, and gather with friends.

Inside the magazine, we also explore the history of the Curry family and their long-standing connection to Lake Barrine, along with plenty of inspiration for family adventures, including great picnic spots for kids and a calendar full of local events.

As always, thank you for supporting local and being part of our community. We hope you enjoy this issue.

Happy reading!

Mia Bain

Want to be part of *What's On Tablelands* and promote your business or event? Let us help! Contact us for rates and to book advertising:
info@whatsontablelands.com.au

Front cover Bec Magro, Gunner, and Dolly Pugton
Photographer Crystalyn Jones
Back Cover Emu Creek
Photographer Paul Curtis
Editorial/Design Mia Bain
Media/Content Dominique Bain

0408 882 338
 info@whatsontablelands.com.au
 PO Box 1235, Tolga Qld, 4882
 Whats On Tablelands
 @whatsontablelands

Circulation: 8,000 across the Tablelands

We acknowledge the First Nations people who have owned, cared for, protected and nourished this Country where What's On Tablelands is created and distributed. We recognise their continuing connection to Country and pay our respects to their elders past, present and emerging.

Publisher's Note: Views expressed are not necessarily those of the publisher or its advertisers. Information contained in this magazine is subject to copyright and may not be reproduced, copied or transmitted in any form or by any means without prior written consent from What's On Tablelands. While every endeavour has been made to ensure accuracy, the publisher cannot be held responsible for any errors, changes or omissions.



win! win! win!

Enter to win a Family Pass to Pioneer Weekend!

30-31 May 2026

Entries close 24 April 2026
Enter online at: www.whatsontablelands.com.au

* Terms & conditions apply. See What's OnTablelands website for details.

2026

Millaa Millaa Market Days

Saturday 2 May
Saturday 4 July
Saturday 5 September
Saturday 7 November

Handmade & Grown @ the Hotel | Secondhand goods @ the CWA Hall

Inquires to: M - 0459 220 723 E - millaaprogress@gmail.com



A Tablelands Harvest Adventure

An unforgettable paddock-to-plate journey with **Belinda Moore** – Sustainable Table

The Atherton Tablelands is a region where fertile soils, cool mountain breezes, and passionate growers come together to create something truly special. With orchards, dairies, coffee estates, and artisanal producers scattered across a landscape of rolling green hills, this is the perfect place for anyone who loves tasting food right where it's grown.

Designing your own paddock-to-plate tour is easy: winding country roads connect small farms, friendly growers, and scenic cafés, and every township offers a new flavour to explore. Whether you're travelling with kids, seeking an authentic experience close to home, or simply curious about how your food is produced, the Tablelands offers an adventure for every appetite.

Pick, Taste & Learn: Farms to Explore

Shaylee Strawberries (Atherton) opens its fields in season for pick-your-own fun, with a café serving strawberry treats year-round.

Golden Oak Mushrooms (Upper Barron) hosts monthly farm gate days on the first Sunday of each month, featuring gourmet mushrooms and insights into low-impact growing.

Mungalli Creek Dairy (Mungalli) offers biodynamic dairy, farmhouse meals, and views into their production area and

across rolling green hills dotted with happy cows.

Gallo Dairyland (East Barron) features artisan cheese, handmade chocolate, and an interactive animal nursery.

Australian Platypus Park at Tarzali Lakes (Tarzali) pairs wildlife viewing with a café serving local smoked delicacies.

Hectic Valley Farm (Mutchilba) welcomes visitors for animal encounters and relaxed on-farm camping.

Barron River Red Claw (Mareeba) is a working aquaculture farm offering fresh, locally grown red claw during seasonal on-farm sale days.

Coffee Country: Highlands Roasteries & Plantations

Jaques Coffee Plantation (Mareeba) runs plantation tours and tastings.

Skybury Coffee & Papaya (Mareeba) offers a hilltop café, roastery, and educational displays.

Crater Mountain Coffee (Upper Barron) grows Australia's highest-altitude coffee and opens to visitors on the first Sunday of each month.

Coffee Works (Mareeba) provides generous tastings of coffee, chocolate, and liqueurs.



Mungalli Creek Dairy



An abundant roadside stall

Tropical Brews, Spirits, & Wines

Mt Uncle Distillery (Walkamin) produces award-winning gin, rum, and agave spirits.

de Brueys Boutique Wines (Mareeba) crafts vibrant fruit wines.

Wild River Mountain Distillery (Wondecla) creates small-batch whisky, gin, and rum.

Golden Drop Winery (Biboohra) is the world's first mango winery.

Billycart Brewing Co. (Atherton) serves craft beers in a relaxed, family-friendly venue.

Shop Like a Local: Markets & Farmgate Finds

Roadside stalls across the region sell almost everything grown here – and that's a lot!

Local markets overflow with seedlings, farm-fresh produce, artisan foods, and food vans. **Barefoot Biodynamic Farming** is a favourite for plants and garden inspiration.

Food hubs and outlets such as **Tablelands to Tabletop**, **Wholesome Kuranda**, **FNQ WholeFoods**, **The Humpy**, **Winter & Mann**, and **Atherton Food Co-op** support local growers and seasonal eating.

Independent organic grocers offer regional teas, nuts, spices, and pantry staples. **Atherton IGA** is a must-see! **Essence Wholefoods** in Mareeba has an in-store café!

Taste the Tablelands: Events & Experiences

Taste of the Tablelands celebrates growers, chefs, and producers with tastings, workshops, and entertainment.

Taste and Drive Tablelands highlights the best of the best!

The **Atherton Tablelands Food Trail** online links cafés, distilleries, roasteries, and other food producers into a self-guided loop.

Guided foodie tours, including Indigenous food and cultural experiences, provide curated insight into the region's stories.

Plan Your Own Tasting Adventure

Always check opening hours and seasonal availability as some farms welcome visitors year-round, while others operate seasonally or by appointment. No matter where you wander, the Tablelands rewards every visit with fresh flavours grown with care in one of Australia's most remarkable food regions.

Keen to dive deeper into what's happening behind the scenes in the region? Explore Sustainable Table's ATIC project and our work across the Atherton Tablelands at sustainabletable.org.au/projects/cairns-atherton-tablelandsblog.



Food Safari

Stop in to see and taste food and fresh produce from Tropical North Queensland

FREE

© Tourism Tropical North Queensland

10am–12 noon Thursdays

14 May • 18 June • 16 July
13 August • 17 September

Atherton Tablelands Information Centre
1A Herberton Road, Atherton

TRC
TABLELANDS REGIONAL COUNCIL

QUEENSLAND
EXPLORE CENTRE VISITOR INFORMATION

The poster features a vibrant image of tropical produce including mangoes, a macadamia nut, and breadfruit. The background is a mix of blue and pink wavy shapes.



Kids on the Tablelands

Kid friendly picnic spots by **Olivia Rowe**

One of the best things about living on the Atherton Tablelands is how easy it is to head out for a picnic with the kids. With wide open spaces, swimming spots scattered across the region, and plenty of playgrounds to stop at along the way, it's a simple way to get the kids outdoors without spending much.

Lake Eacham is a fabulous spot for families who love a cool dip. There's the option for swimming, paddleboarding, or kayaking, with shady picnic tables nearby, some fitted with BBQs for an easy lunch by the water. A walking track loops around the lake for those keen to stretch their legs, and there's plenty of grassy space for kids to run around or kick a ball.

For a playground plus picnic in one hit, head to **Maude Kehoe Park in Yungaburra**. The play equipment has recently been upgraded, giving the kids plenty to explore. The playground itself is undercover and fully fenced, plus there's plenty of grassy space nearby to roll out a rug. You can grab takeaway from the village if you'd rather not pack everything yourself.

It's relaxed, close to coffee, and easy to manage with multiple kids!

For more waterside options and plenty of space to spread out, **Lake Tinaroo** is hard to beat. The foreshore parks at **Tinaburra** and **Tinaroo** offer BBQs, shelters, and wide grassy areas, with plenty of room for swimming, paddling, and other water activities. Both foreshores also feature playgrounds, and the one at Tinaburra is fully fenced.

On the Tablelands, you're rarely far from a shady park, a stretch of grass, or a lake worth lingering beside...

Jack May Park in Malanda offers plenty to keep kids busy while you settle in for a picnic. The large nature playground is built with timber and natural elements to climb and balance on, and there's plenty of open grass nearby for games. The pump track is a favourite for bikes and scooters, and there are picnic tables and space to roll out a rug.

Emerald Creek is a great picnic stop if you feel like adding a short walk to the day. The day-use area sits beside the creek under tall gum trees, with picnic tables and plenty of space to spread out a rug. For older

ARTIME *Tickets on Sale Now!*
2 days of family fun entertainment, competitions & more!
The only show in the Far North to see working dog demos with Nathan Obst and Frank Finger from ABC's Muster Dogs
WILDLIFE INSTINCT
ANIMALS PLUS
QR Code
the Atherton show
Monday 29th & Tuesday 30th July 2026



children, a 1.9km track leads to a lookout over Emerald Falls with wide views across the valley, and a steeper track continues down to the base of the falls for those keen to explore further. Note that parts of the access road are unsealed.

Keep your eyes peeled for updates on the opening of the **Priors Creek Parklands in Atherton** later this year. The space is set to become a great community hub and will be a lovely spot for picnics, with plans for a nature-based playground, a pump track, and great opportunities for bike-friendly activities, sitting so close to the **Tablelands Rail Trail** and the **Atherton Forest Mountain Bike Park** trailhead.

Picnics with kids can be as simple or as elaborate as you like – from grabbing a few bakery rolls for lunch to packing a full picnic basket with a cheese platter and all the extras. Most of the time, the basics are enough: a rug, hats, sunscreen, spare clothes, and a rubbish bag so you can take everything home with you.

On the Tablelands, you're rarely far from a shady park, a stretch of grass, or a lake worth lingering beside for a while. Find a good spot, roll out the rug, and let the kids make the most of it!



WHAT'S ON APRIL



Mondays
 Canasta
 12pm

Tuesdays
 Bingo Eyes Down 9:15 am
 Morning Melodies 28th
 Emily James 11 am

Wednesdays
 Texas Hold 'em Poker
 6:30pm

Thursdays
 Trivia 2nd- 7pm
 Musical Bingo 9th- 6pm
 Charity Trivia 16th- 7 pm
 Musical Bingo 23th- 6pm
 Charity Trivia 30th- 7pm
 Mareeba Animal Refuge Centre

Fridays
 Live Music Every Friday From 7pm
 4/4 Paronella's
 10/4 Emily James
 17/4 Infirity Duo
 24/4 The Pannikin Duo
 Goose Club Raffle
 From 7pm
 Members Draws
 7:30pm & 8:30pm

Saturdays
 Monster Meat Tray Raffles
 Sold from 6pm -
 Drawn 7pm & 8pm
 + Bonus cash draw \$300

Sundays
 Members Draws
 6:30pm & 7:30pm

Wednesday Night
Rump Hump Day \$25

BB's
Lost World Wagyu Burger
 Seasoned fries & garlic aioli \$25
 Local Lost World Wagyu • Atherton Tablelands

Sunday Dinner Buffets
 26th April
 6pm





The Dirt

Planning a food garden to be manageable and restorative, with **Kate Martignier**

In April on the Atherton Tablelands, the weather is cooling off and an end to the rainy season is in sight, so it's a good time to be thinking of getting out in the garden. If you're planning a food garden, here are some ideas for making it easy to manage by keeping it small, close, and connected.

On keeping your garden small and close

Plan your food garden with your needs in mind. For example, I need greens at least once a day; I need ginger less often. So I have greens by the kitchen door, and the ginger is further away.

Things you need daily should be right beside the paths you use daily. If your only regular pathway through the garden is the one to the driveway and your garden is a few pots beside that path, start there.

Don't go sprawling out into areas you're not already in the habit of visiting regularly, and that you don't have time to maintain properly.

For similar reasons, keep it small to start with. If you're a beginner or you're short on time, start VERY small. Even as small as just. One. Plant.

Really. Build a mutually beneficial relationship with a pot of parsley by the kitchen door or a patch of chickweed in your lawn. Expand your food garden only when you are successfully gathering at least one small serve of homegrown food from your existing garden consistently, and you find yourself with not enough to occupy your available gardening time.

A big, bountiful veggie garden might impress your friends and neighbours, but if you can't sustain it, then it will just become a drain on your time, resources, energy, and morale. You need a garden that FEEDS you, not one that depletes you. So plan it to be manageable.

"You need a garden that FEEDS you, not one that depletes you. So plan it to be manageable."

On connections between plants

What I call "like-minded" plants are those with similar needs in terms of sunlight, moisture, soil fertility, and so on. Grouping plants together with their needs in mind



Create a small and manageable patch in an accessible area

makes them easier to look after and leverages your time and effort.

What I call “complementary” plants are those that can help meet the needs of other plants. An example is arrowroot providing shade for ginger (while also having similar needs for moisture, fertility, temperature, etc).

On connections between plants and humans

Our relationships with the plants we eat, including wild edibles that never appear on supermarket shelves, go way back. We've been looking after the plants, and they've been looking after us, for a long time.

The loss of these relationships and the weakening of our interrelatedness with the rest of Life on Earth is one result of Industrial Agriculture.

When you plant and tend a hyperlocal food garden – small, close, connected – you're helping restore our interdependence within the web of life. We can do this right here on our porches, by our driveways, and in our backyards. One plant and one small serving of homegrown food at a time.

We plan food gardens for a variety of reasons, including something called “food sovereignty” – having more control over the source of our food. That's as opposed to relying

on supermarket shelves that can be suddenly empty when severe weather cuts the roads, or the global supply chain gets the hiccups.

Real food gardens – on any scale, from one pot of herbs to an entire kitchen or community garden – are a piece in the puzzle of how to rebuild food sovereignty for our families and communities.

This article by Kate Martignier is adapted from a piece originally published on aRealGreenLife.com, where you can read the full article online.



TALLOW SOAP
100% hand-rendered tallow, lye.
Nothing else.

Find me at:
Atherton Food Coop,
Atherton Health Food,
or call 0429 925 246

made at a kitchen table near Millaa Millaa:



Atherton Rotary Celebrating Gordon Malcolm's 40 Years of Service



For four decades, Gordon Malcolm has exemplified what it means to serve with quiet dedication and genuine heart. Marking 40 years with Rotary International, his contribution to our community is both significant and enduring.

Throughout the years, he has taken on many responsibilities, including the role of president and secretary, helping to guide initiatives that have strengthened local connections and supported those in need. His commitment has extended beyond our region through international projects, including helping establish the Cambodian ODA project, reflecting a belief that service should reach wherever it is needed most.

His leadership has never been about recognition, but about bringing people together to create meaningful change.

Among the many projects he has supported, one of his greatest joys has been involvement in the youth public speaking competition, encouraging confidence, communication, and growth in young people. This passion for mentoring reflects a deep belief in investing in future generations.

Gordon's commitment extended beyond supporting young people; he was equally dedicated to the wellbeing of local seniors through his service on the board of Carinya Home for the Aged. In this role, played an active part in fundraising initiatives to help ensure the organisation could continue providing quality care to the community.

His 40-year milestone is not just a measure of time, but of lasting impact, generosity, and community spirit. Well done Gordon, and thank you for your service!



The Design & Build Series

Old Timber: Trash or Treasure? With **Jordana Wakelin**

When I sat down to talk with Ed, I wasn't sitting! He took me on a tour around his property, sharing the various projects he has on the 'hop'. By occupation, Ed is a dentist. Outside of work, he is someone who challenges himself by pursuing ambitions with a 'can do' attitude. This story is about personal accomplishments and having joy in your heart.

Building his own house wasn't a sudden decision or a midlife experiment – it was something he had always believed he would do and carried the idea quietly, having collected old timber-working tools well before he found the land to build on. That belief eventually took shape in the form of a home featuring reclaimed and local timbers.

Old sheds, fallen trees, and salvaged structures from the local area became sources of timber. Each piece had its own character, marks, and imperfections. Working with reclaimed timber meant extra effort – cleaning, milling, and adapting each board.

Ed's wife, Ellen, is a local General Practitioner, and balancing busy professional lives with building a house was never going to be easy. At one stage, their work took

...(he) carried the idea quietly, having collected old timber-working tools well before he found the land to build on. That belief eventually took shape in the form of a home featuring reclaimed and local timbers.

them on a hiatus to Townsville. Progress was slow, but steady. The build took five years from start to move-in stage.

Reclaimed timber played a big role in shaping the character of their home. Rather than forcing materials to fit a fixed plan, the design responded to what was available. A beam might determine a ceiling height, or a particular piece of timber might influence a layout choice. The result is a home that feels grounded and honest, with visible stories in its walls, floors and frames.

Fallen trees of Queensland Maple and Kauri Pine were slabbed and milled, now featuring throughout the home. The comfort of extra-wide Queensland Maple floorboards underfoot is a continuous thread throughout the living areas. Bespoke Kauri Pine shelves with curved lines and soft edges allow the grain and warmth of the timber



Grey Satinash cladding



Reclaimed timber flooring



Rustic Dutch barn door



Queensland Maple timber servery

to shine as well as provide functional storage to the bathrooms. A beautiful steel-framed spiral staircase with timber step treads and a handrail features in the heart of the home. The timber was salvaged from a neighbour's pergola in Brisbane and is believed to be the rare and highly prized slow-growing King William pine from Tasmania.

Ed shared how he loves bringing life back to the timbers he has salvaged, like old Blackbean beams from a Peeramon house verandah that was destined for the rubbish tip, are now external window frames. The durability of Blackbean hardwood ensures the frames will withstand the weather.

It was hard to choose one highlight in this home, so I chose one timber, two features. Grey Satinash, rescued from an old farmer's potato shed on the Barron River, has become quite a showpiece. A rustic Dutch barn door opens to the 'steam engine' of the home – where all the working bits go, and it's okay to get a little dirty. The Dutch barn door couldn't be more fitting for this space. Even though it is a hardwearing space, it is possible to have something beautiful and functional to enjoy. Second is the verandah, perched with views toward the creek and across the land. This space is a place to entertain guests, plan, relax or reflect. A Queensland Maple servery highlights Grey Satinash cladding. The history of the timber provides a richness of character and warmth that matches the hospitality experienced on this visit.

Now complete, the home stands as a reflection of years of belief, preparation, and persistence. The tools he collected long before he needed them have done their job, and Ed has connected with a community of other owner-builders where he now finds himself as a mentor and keeper of a tool 'library'.

I asked Ed, "What advice would you give anyone wanting

to build their own home?" Without hesitation, his reply was, "Do it, but whatever your timeframe is, multiply it by five! And team up with other like-minded people to share resources and lend a hand."

The idea he carried for so long is now a lived reality, and yet, in true form, he's already thinking about what's next. For someone who is always working on something, this house is another chapter in a lifelong habit of setting goals and accomplishing them while enjoying the moment.

» For the extended version of this story, visit:

www.heartandhomeproperty.com.au

If you enjoyed this content, would like to see more stories like this and know of another grand design, heritage restoration, or owner builder story, I'd be delighted to hear from you.

Jordana is the principal agent and owner of family owned and operated real estate business, **Heart & Home Property**, located on the Atherton Tablelands.





Jordana Wakelin
Principal - Licence No. 4657704

☎ 0488 693 084
✉ jordana@heartandhomeproperty.com.au
🌐 www.heartandhomeproperty.com.au

Sell with Confidence

Providing the Tablelands first
Tailorable & scalable
real estate service

- Low sales commission
- Providing custom real estate marketing solutions
- Enabling owners to DIY with private seller mentoring
- Marketing & managing holiday accommodation



OUR PLACE

RESTAURANT
YUNGABURRA



Dinner: Thursday to Monday from 5.30pm
Lunch: Friday to Monday 12pm to 2pm
Bookings Essential
17 Eacham Rd. Yungaburra
ourplacorestaurant.net



organic • biodynamic • local

Fresh Produce & Groceries
* Not-for-profit *

7E Herberton Road, Atherton | Ph 4091 1268
Open Mon-Fri 9am-5.30pm, Sat 9am-1pm

"Good food that doesn't cost the Earth"

COME FLY WITH US

30 MINS **\$583** FOR 2PAX

60 MINS **\$946** FOR 2PAX

EXPLORE

ATHERTON TABLELANDS

TINAROO 'N'



TABLELANDS
-SCENIC FLIGHTS-

BOOK WITH TREVOR : 0400 750 330

Sip & Dine

Guide 2026



Where to Eat Out on the Atherton Tablelands

Being blessed to reside in a "food bowl", our region has an abundance of the very best of locally grown, farm-fresh ingredients. From locally sourced grass-fed beef, locally grown and roasted coffee, to biodynamic dairy goods and homemade treats, there is a fantastic selection of places to eat out or grab a drink on the Tablelands.

What's On is pleased to present you with our *Sip & Dine Guide* for 2026!

If you'd like your establishment included in the next *What's On Sip & Dine Guide*, email Mia at info@whatsontablelands.com.au

COFFEE WORKS



Est.1988. Boutique Roasters + Chocolatiers. Family Owned. Crafters of Feel Good. Join us. Join our Tribe!
COFFEE: Meet the Locals! Roasted by Us. Rated by You.
CHOCOLATE: Gift Delicious. Edible Art. Yes! We Custom Create.
LIQUEUR: Crafted Onsite. We Shout Liqueur Samples. Meet the Fleet!
TEA: Greens. Chais. Whites. Blacks. Fancys. Oolongs in Gourmet Stores.

1 Mareeba, Atherton, Cairns, Port Douglas, Townsville
coffeeworks.com.au



SKYBURY FARMS

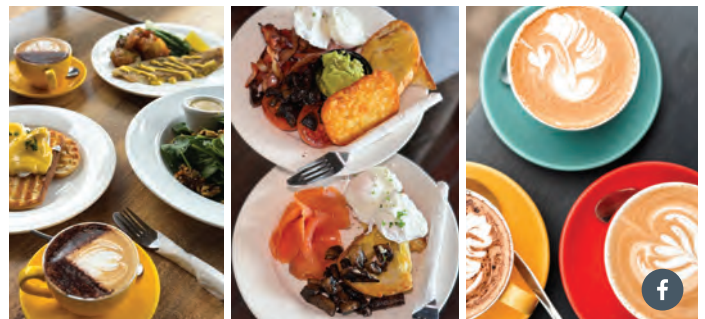


Skybury Farm offers a unique experience at Australia's oldest coffee plantation and leading producer of tropical red papaya. Enjoy a relaxed café setting with stunning views, paddock-to-plate dishes, farm-grown coffee and farmgate produce. Plantation tours begin in April, offering a behind-the-scenes look at farm life from planting to harvesting. Open weekdays 9am-4pm, Sat 8am-3pm (Sat opening 11 April).

2 136 Ivcevic Road, Paddys Green
4093 2194 | skybury.com.au



SAVANNAH CAFÉ



Savannah Café, located inside the Mareeba Heritage Museum, offers a setting like no other. Enjoy old-world charm as you sip a coffee or enjoy a meal all while looking over a historic backdrop. Our menu features fresh, flavourful meals made with ingredients we're proud of. We are open for breakfast and lunch Monday through Friday from 9am-4pm and weekends from 8am-4pm.

3 345 Byrnes Street, Mareeba
4092 1146 | savannahcafe.com.au



CHILLAGOE GALLERY 29



Head out west to Chillagoe Gallery 29 for the best barista-made coffee in the outback. Enjoy coffee on the go, in the garden, or bring your own picnic. Choose from a selection of delicious cakes and slices. Browse the store for quirky one-off gifts and local cut and polished marble.

4 29 Queen St, Chillagoe



MT UNCLE DISTILLERY



A leading Atherton Tablelands day-out destination, crafting award-winning rum, agave spirits, gin and whisky using local cane and estate-grown Blue Weber agave. Enjoy tasting paddles, cocktails and grazing boards in a relaxed setting. Roaming alpacas and an on-site RV retreat add to the experience, with Music at the Mount on the first Saturday of the month. Cellar door open Mon-Sun, 12-6pm.

5 1819 Chewko Road, Walkamin
4086 8008 | www.mtuncle.com



EVENTIDE HILLS DISTILLERY



Eventide Hills Distillery offers a relaxed distillery door experience, with 100% locally handcrafted spirits made right here in the region. Enjoy creative cocktails, local cheese boards and a welcoming, family-friendly atmosphere, with regular food trucks and live music adding to the experience. A great spot to unwind with friends. Open Wed-Thu 11am-5pm, Fri-Sat 11am-9pm, Sun 11am-6pm.

6 2-10 Arbouin Road, Tolga
4095 5841 | eventidehillsdistillery.com.au



BILLYCART BREWING CO.



A locally owned and independent brewery pouring a wide range of delicious small-batch craft beers. The relaxed taproom caters to both adventurous beer lovers and those simply chasing a cold one at the end of the day. Takeaway cans available, food vans, regular live music and trivia nights creating a relaxed and fun atmosphere all year round. Open Thu 12-8pm, Fri & Sat 12-9pm, Sun 12-8pm.

7 65 Tolga Road, Atherton
www.billycartbrewing.com.au



THE STATION CAFÉ



The Station Café is located in Atherton's Platypus Park precinct and invites patrons to dine inside railway carriages, presents a model railway for families to enjoy, and is dog friendly. Open Thu 8:30am-2pm, Fri-Sun 7am-2pm.

8 Atherton-Herberton Road, Atherton
0448 235 409



NICK'S RESTAURANT, BAR & PIZZERIA



This popular restaurant was started in 1986 by Nick and has continued to be a favourite for locals and tourists alike. Authentic European cuisine including al dente pastas, traditional pizza, steaks and more. Fully licensed bar, happy hour, dine-in or takeaway. Open Wed-Sun 4:30pm-8pm.

9 33 Gillies Range Road, Yungaburra
4095 3577 | nicksrestaurant.com.au



BURRA BAKEHOUSE



Established by two young local friends, Burra Bakehouse is a rustic artisan bakery in the heart of Yungaburra, celebrating quality ingredients and handcrafted pastries. From flaky croissants and seasonal danishes to hearty sourdough, pies and freshly made sandwiches, everything is baked fresh onsite daily with care. Enjoy our beautifully brewed coffee. Open Wed-Fri 6am-2pm, Sat-Sun 6am-12pm.



10 2 Quincan Close, Yungaburra

OUR PLACE RESTAURANT



Feel truly welcomed at Our Place as you are seated, served, and cooked for by the owners of this elegant restaurant. Relax in the cozy atmosphere and enjoy quality homestyle food made from fresh, local ingredients. Located in the heart of Yungaburra, this family-friendly restaurant is not to be missed. Open Fri-Mon from 12pm.



11 17 Eacham Road, Yungaburra
4095 2235 | ourplacrestaurant.net

THE GILLIES CAFE - BAR - DELI



Enjoy the beautiful views while the kitchen whips up a delicious meal or browse the Italian Delicatessen and Fine Foods Store where you can order a fresh Italian panini. Also offering catering and venue hire for private functions. Friday nights come alive with tapas, live music, cocktails and sunsets. Open daily 6am-3pm, Fri 5-10pm.

The Gillies
CAFE - BAR - DELI

12 1200 Lake Barrine Road, Yungaburra
0409 720 461

THE BIG PUB - 1911 RESTAURANT



1911 Restaurant serves up delicious and wholesome meals seven days a week with daily specials. They offer dine-in or takeaway, and a vegan/vegetarian menu. Pizzas are available for lunch and dinner. Breakfast 10am-12pm, Lunch 10am-2pm, Dinner Mon-Sun 5:30-8pm.

THE BIG PUB
MALANDA

13 12-20 English Street, Malanda
4096 7720

PINK PINEAPPLE EATS MALANDA



A place to stop and brighten your day. Pause and play while you decide from a menu filled with choices. Ranging from housemade pizzas loaded with toppings, modern burgers, southern fried chicken or classic fish and chips. They offer a wide range of iced drinks ranging from frappes, bubble tea and milkshakes. Locally owned and operated, with catering available. Open Tue-Wed 3pm-7:30pm, Thu-Sat 11am-7:30pm.



14 34-36 James St, Malanda
4095 1316

MUNGALLI CREEK DAIRY



The "Out of the Whey" Farmhouse Café showcases Mungalli's award-winning Biodynamic milk, cheeses, yoghurt and ice-cream. A must-stop for lovers of fine food – graze on one of their delicious cheese or dessert platters, try their famous ploughman's lunch, scones with Jersey cream or an amazing cheesecake. Just 10 mins from Millaa Millaa Falls. BYO. Open daily 10am-4pm.

Mungalli
Biodynamic

15 254 Brooks Road, Millaa Millaa
4097 2232 ext 1 | mungallicreekdairy.com.au



3



4



5



7



10

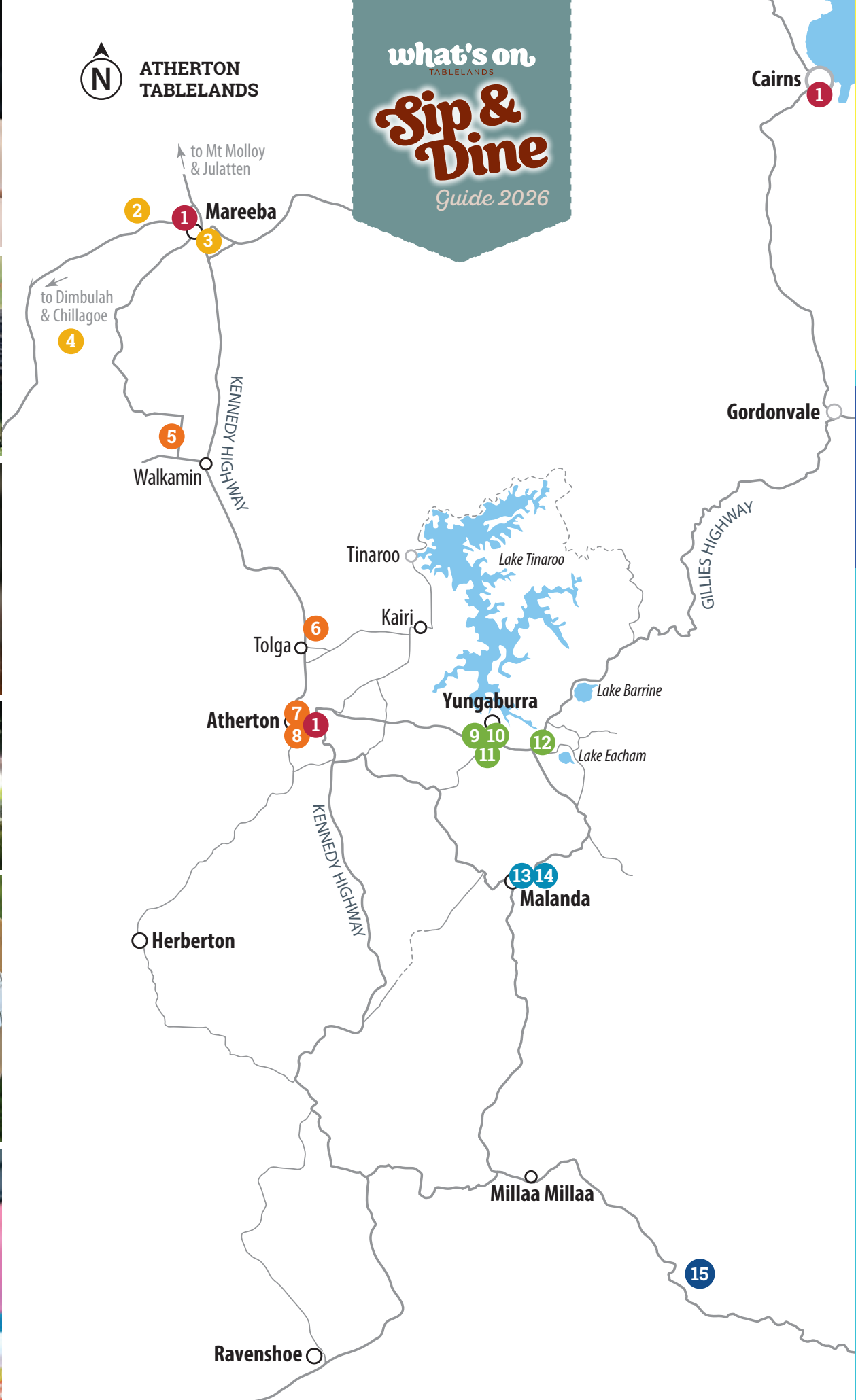


14



ATHERTON
TABLELANDS

what's on
TABLELANDS
Sip & Dine
Guide 2026



Whats On Tablelands



WhatsOnTablelands



whatsontablelands.com.au



0408 882 338



info@whatsontablelands.com.au



**SCHOOL
HOLIDAY
PROGRAM**

- * Full Day & Half Day Sports Camps
 - * Individual Classes
 - * All ages, including toddlers and adults
- See full schedule at flicksa.com.au

Sport programs run by qualified coaches to inspire your kids, to foster healthy habits, build their confidence, learn team work, improve communication skills & promote personal growth.



**MALANDA
GYMNASTICS**

- Kindergym
- WAG & MAG
- Rhythmic Gymnastics
- Cheerleading
- Boys Gymnastics
- Adult Classes
- Tramp & Tumbling

@ MALANDA
GYMNASTICS CLUB



**SPORTS IN THE
PARK**

- Play a large variety of fun modified team sports
- Develop social skills, team work & confidence
- Play sports without giving up your weekend

@ JACK MAY PARK &
KAIRI STATE SCHOOL



**FITNESS CLASSES
AT THE GYM**

- Ages 5+
- KidFit Classes
- TeenFit Classes
- Girls Only Classes
- Beginners through to advanced classes

@ SIX DEGREES GYM
& ASHLEY CUPITT
BOXING ACADEMY



PH GRAHAM / KRISTINA
0438 642 498

LEARN MORE

FLICKSA.COM.AU



Tales of the Tablelands

Chelsey Reis discovers the history and heart behind the **Curry family's** Lake Barrine legacy

As I drive past the gently dripping rainforest that surrounds Lake Barrine, I realise it's been far too long since my last visit to this stunning and serene place. Once inside the charming historic building, constructed using timber salvaged from a local railway station, I'm met by Nalita Curry, who, with her partner, Felipe Rodriguez, own and manage the 'Teahouse at Lake Barrine'.

Nalita is the great-granddaughter of George and Margaret Curry, who in the early 1900s were lucky enough to obtain a perpetual lease on the land surrounding Lake Barrine. After canoeing on the lake – formed by volcanic activity

more than 10,000 years ago – George fell in love with the magical waterway and conceived of the idea of building a teahouse and offering boat trips around the lake, a dream which was realised in 1924.

When George was tragically killed in WW2, Margaret began a tradition of cooking Sunday roasts as a way to bring the community together. Since that time, the tradition of bringing people together to share lovingly crafted fare and connect with nature through walking and boating the lake has continued to inspire four generations of the Curry family. At the heart of the teahouse is a shared love and stewardship of the lake.



Ben Curry on Lake Barrine



The Curry kids

'At the heart of the teahouse is a shared love and stewardship of the lake'.



Lake Barrine Teahouse



Jae and Jim Curry



Steve and Ben Curry

As the custodianship of the teahouse and boat tours has passed down and across generations, the sharing of experience and stories has always been a treasured practice in the family. From her granddad, Jim Curry, bringing wayward pythons onto the boat tour – which on one memorable occasion saw customers running for cover as the python decided it wasn't keen to swim back to shore and instead reboarded – to the interruption of the ceremonial opening of the boat by her grandparents' cat bestowing a few gentle swipes to the head of the National Park representative, both the humorous and hands-on lessons learnt by her predecessors provide guidance and support for Nalita and Felipe.

'... Hardly a day goes by without someone catching my ear to tell me about a loving connection they have with the lake, the family, or the history.'

'There have been so many lessons to learn from all the generations at Lake Barrine. Grandma and Granddad filled their lives with adventure and fun. They ran this business with such joy, and they never stopped exploring the world. My Aunty Leanne grew up at the lake, and with her husband, Bill, ran the teahouse for 22 years. They are a wonderful team, and it's like having a well of knowledge only a phone call away.'

Now World Heritage-listed, Lake Barrine offers a unique ecosystem where the rainforest comes to the water's edge and boasts towering twin Kauri pines, orchids, ferns, and a plethora of local wildlife, including water dragons and turtles. When her parents decided to retire, Nalita felt strongly that the teahouse needed to remain in the family to ensure it remained open to all.

Since she and Felipe took over the teahouse, Nalita recounts her growing awareness of how the teahouse and lake have played a special role in her family and in the lives of countless individuals over the years. From her recent meeting with the 86-year-old man who built Lake Barrine III

– their current vessel – back in 1982 in Cairns (and which was inadvertently transported up the Gillies without police escort much to the chagrin of the local cops!) to the couple that come regularly and kayak over the lake and report that by the halfway point, they have solved all their problems, the plethora of stories weaves a shared tapestry that

intertwines the history of her family and the lake with the experiences of locals and tourists alike.

'These are the stories that Lake Barrine is full of, and these are the stories I have come to love. Lake Barrine is a living history for so many people. Hardly a day goes by without someone catching my

ear to tell me about a loving connection they have with the lake, the family, or the history.'

Nalita's partner Felipe, who is originally from Chile, has also now become part of the ongoing story, bringing both expertise in business and a reverence for family that complements their shared vision and management of the venue. Some of Felipe's mother's treasured woollen wall hangings – woven on a 'Telar', or loom – now sit side by side with a piano that was a wedding present to Nalita's great-grandmother, illustrating the collection of stories that combine to become both part of the heritage and inspiration for the future of the teahouse and lake.

'...generation after generation of family, friends, and loved ones, all putting their hearts into this amazing Lake. Some things never change – but over the years, the scones have changed a touch. My dad tells me that when he was young, he remembers his grandmother always sieving out the weevils – so there's less protein in them now!'

Know a local with an interesting life story to share?
Email info@whatsontablelands.com.au



April calendar highlights

Please be advised that event details are subject to change. Confirm details with organisers prior to event.

<p>SUNDAY 01 APR</p>	<p>More events are added each week! Follow What's On Tablelands on social media to stay up-to-date.</p> <p>Art Exhibition – Yesterday Today Tomorrow by Bruce Kilpatrick Exhibition exploring fishing, fossicking, animals, and landscapes through mixed media. Foyer Gallery On display all of April FREE ENTRY</p> <p>Luck & Fate: the Artifacts of Fortune Exhibition An exhibit exploring superstition, symbolism, and the pursuit of protection and prosperity in Chinese culture through rare historical artefacts. Hou Wang Chinese Temple & Museum On display all of April General admission fees apply</p>	<p>SATURDAY 04 APR</p> <p>Easter Celebration Atherton International Club Easter arts & craft, egg & spoon race, raffle, visit from the Easter bunny From 5:30pm</p> <p>Music at the Mount Mt Uncle Distillery, Walkamin Live music & food truck 2pm-8pm</p>	<p>SUNDAY 05 APR</p> <p>Easter Sunday – keep an eye on our social media for updated event listings</p>
<p>FRIDAY 03 APR</p>	<p>Social Birding at Hasties Swamp Birding and survey morning Hasties Swamp Bird Hide BYO binoculars & smoko 7am-9am FREE EVENT</p>	<p>THURSDAY 09 APR</p> <p>Trivia at Billycart Brewing Co Team trivia, locally brewed beer, food truck From 6:30pm Atherton FREE EVENT</p>	<p>SUNDAY 12 APR</p> <p>Annual Purebred Poultry Auction Viewing from 8am, Auction starts 9:30am Percy Tardent Memorial Poultry Pavilion – Atherton Showgrounds Text 0413 209 232 for more info FREE EVENT</p>
<p>SATURDAY 04 APR</p>	<p>Iron & Steam Fair Herberton Historic Village Steam exhibitions, diesel & working demonstrations, classic vehicles 9am-5pm Normal admission prices apply</p>	<p>SATURDAY 18 APR</p> <p>Herberton Trash, Treasure & Collectables Fair Herberton Hall Plants, books, pre-loved clothing, toys, & more 8am-12pm FREE EVENT</p>	<p>FRIDAY 24 APR</p> <p>Outback Rock & Blues Festival 24-26 April Discovery Resorts – Undara Book online at Discoveryholidayparks.com.au</p>

DID YOU KNOW?

The risk of dementia increases by 16% for each 10-decibel worsening of hearing.
According to Ageing Research Reviews, 2024

Hearing Assessments
 Hearing Enhancements
 Cognitive Screening

CALL 4091 1689

AUDIOHEALTH

TO BOOK YOUR APPOINTMENT TODAY

hear well, live well

125 Grafton St CAIRNS | 11/2-4 Stanton Rd SMITHFIELD | 3/3 Cook Street ATHERTON
CAIRNS | INNISFAIL | ATHERTON | PORT DOUGLAS | MAREEBA | SMITHFIELD

Arts & Crafts FAIR

Local art, crafts & supplies for sale.

Food & drink available.

MAY 3rd

8am - 12.30

Merriland Hall
Atherton Show Grounds

Proudly brought to you by the Atherton Tablelands Agricultural Inc.

Supported by Tablelands Regional Council

<p>SATURDAY 25 APR</p>	<p>ANZAC DAY <i>Lest we forget</i> Follow our social media for local services and commemorative events</p> <p>Great Northern Bullriding Series Mareeba ANZAC round 5pm-11pm Mareeba Rodeo Grounds Free unpowered camping Saturday night Tickets through Humantix, from \$25</p>
<p>SUNDAY 26 APR</p>	<p>Djembe Drumming with Jeff Cotter Tablelands Music Lovers – Grainger Lane, Atherton 10-11:30am \$30</p>
<p>THURSDAY 30 APR</p>	<p>Charity Trivia at Atherton International Club Meals & Drinks available Atherton 7pm GOLD COIN DONATION <i>Proceeds go to Mareeba Animal Refuge Centre</i></p>

Don't miss your opportunity to advertise in the next issue of *What's On Tablelands!*

Our May issue features the **2026 Festivals Guide**

Advertising deadline is **approaching!**

Hurry! Don't miss out!

Contact us today: info@whatsontablelands.com.au

YUNGABURRA BOWLS CLUB
Friendly bowls in the heart of Yungaburra village!



Mixed Social Games
Wednesdays & Saturdays at 1pm
Sign Up Outside the Clubhouse

Club Open Fridays
4pm - 7pm for Drinks & Roll Ups

Cedar Street, Yungaburra
Phone for bookings and info: 40953596

save the date

MAY

- 3 Mother's Day Art & Craft Fair, Atherton Showgrounds
- 8-10 Great Wheelbarrow Race
- 30-31 Pioneer Day, Historic Village Herberton

JUNE

- 26-28 Malanda Show
- 29-30 Atherton Show

JULY

- 11-12 Mareeba Rodeo
- 17-19 Atherton Chamber Music Festival, Herberton
- 31 John Moffat Festival, Irvinebank

AUGUST

- 22 Yungaburra Book Fair

SEPTEMBER

- 6 Spring Art & Craft Fair, Atherton Showgrounds
- 19-20 Bushy Creek Makers' Fair, Julatten

OCTOBER

- 8-11 Savannah in the Round
- 8 Great Northern Bullriding Series, Mareeba
- 10 Malanda Bullride
- 23-25 Tablelands Folk Festival, Yungaburra
- 31 Halloween, Malanda

NOVEMBER

- 7 Great Northern Bullriding Series, Atherton
- 19 Malanda Christmas Festival, Malanda


DECEMBER

- 5 Carols by Candlelight, Atherton Showgrounds



* Dates are subject to change without notice. Please confirm event details with organisers prior to event.

Have an event planned for 2026?



Add it to our save the date today!
info@whatsontablelands.com.au

what's happening, when & where!



Visit our online calendar at
www.whatsonablelands.com.au

HEALTH • WELLBEING • SPORT

Atherton parkrun – 7am (Sat)

Cnr Herberton Rd & Weaver St, Atherton.
 0409 958 129. facebook.com/athertonparkrun

Awareness Through Movement (Feldenkrais)

6:15pm (Tue), online, 1:30pm & 5:30pm (Wed),
 8:45am (Thu). Malanda Men's Shed Hall, Mary St,
 Malanda \$15. Suits all levels of fitness.
 Grace 0428 451 679

Indoor Bowls Atherton – 8:30am (Thu)

Masonic Hall, Golf Links Rd, Atherton. 4091 1381

Meditation & Discussion – 2pm (1st Sun of the month)

Meditation, followed by discussion on a
 spiritual theme. Free. 4095 4689

Pickleball – 4:45pm (Tue), 6pm (Thu), 8:30am (Sun)

Malanda High School Hall. \$5 per session.
 Equipment provided. Frances 0419 792 786

QiGong Halloran's Hill – 9.30am (Thu)

A U3A class. Lesley 0447 825 554

Sound Meditation – 6pm (every 2nd Wed of the month)

@ CWA Malanda. Debbie 0427 559 142
 FB: [debbiesavagetherapies](https://facebook.com/debbiesavagetherapies)

Tableland Bush Walking Club – (every 2nd Wed & Sun)

New Members welcome. View program
 online: tablelandsbushwalkingclub.org

Tableland Dog Obedience Club Dog Training Classes

– 6pm (Wed) @ 44 Mabel St, Atherton.
 Enrolments 1st Wed of the month. Check FB or
tablelanddogobedience@gmail.com

Taekwondo/Self Defence – 4pm & 5:45pm

(Tue & Thu) Merriland Hall, Atherton Showgrounds.
 Annette 0427 581 482

Tai Chi Yungaburra – 4:30pm (Mon),

Yungaburra Community Club, 8:30am (Fri).
 Yungaburra Rec Shed. Maria 0414 302 759

Walking Group – 9am (Mon/Wed/Fri) ECHO,

13 Eacham Pl, Malanda. Free. All welcome.
 4096 6634

Yoga with Gillian, Tolga – 5:45pm-7:15pm (Tue)

Tolga CWA Hall, opp. Post Office. All levels, Hatha
 incorporating stretch, strength, breathwork and
 meditation. Gillian 0407 171 537
 FB: [HappyFeetYoga](https://facebook.com/HappyFeetYoga)

Yoga/Qigong with Lyndel – Malanda, 5pm (Tue)

Uniting Church Hall, 10am (Wed) Chair Yoga,
 CWA Hall. \$15 per class. Lyndel 0488 559 281

Yoga with Carina

9am (Wed) Stretch Yoga Seniors Class @ CWA
 Millaa Millaa, \$5 per class. 9am (Fri). General class
 \$10. 82 Sheehan Rd, Tarzali. 0402 208 377

Zumba Gold – 9am (Mon), 9am (Fri) @ Tolga

CWA Hall. Dance fitness suitable for beginners &
 older participants. \$11 class. Ann 0418 826 168 or
anniemc9@gmail.com

SOCIAL • MUSIC • DANCE

Bingo – 9:15am (Tue), doors open at 8:45am.

Atherton International Club. Proceeds go to
 Atherton Hospital FNQHF. 4091 4970

Bingo – 9:30am-12pm (Wed), doors open at

8:30am. Yungaburra Hotel Ballroom. Proceeds
 go to Yungaburra Beautification.

Bingo – 9am (Sun) Anthill Motel, 79 Byrnes St,

Mareeba. Proceeds go to Friends of Mareeba
 Hospital. 0439 754 380

Learn to Play Canasta – 12pm-4pm (Mon)

Have a coffee and play with friends. Atherton
 International Club. Free.

Malanda Bridge Club – 1pm (Mon & Wed).

Bridge sessions at Malanda Bowls Club. All visitors
 and new players welcome. 0428 775 671

Tableland Bridge Club – 9am (Thu) & 1pm (Sat)

Room 14, Community Centre, 42 Mabel
 St, Atherton. Visitors and new players welcome,
 lessons provided. 0428 913 512

Tableland Country Music Club – Last Sun of

the month. Different venues, contact for details,
 free entry, new entertainers welcome.
 0400 885 586

Tableland Music Lovers – 2-6pm (Sun)

Fortnightly. Open mic night, Grainger Lane,
 Atherton. Everyone welcome. \$5 entry fee.
 FB: [tablelandmusiclovers](https://facebook.com/tablelandmusiclovers)

Tableland Social Dancers – 6:15pm Lesson,

7pm Social Dancing (Wed). Merrilands Hall,
 Atherton. Learn many styles of ballroom sequence
 dancing. \$5, join the fun. Annette 0488 954 202

Tableland Ukulele Group – 1-4pm (1st & 3rd Sat)

Carinya Wellness Centre, 1 Mazlin St,
 Atherton. 2nd & 4th Sat at Old Post Office Gallery,
 Atherton–Herberton Rd, Atherton. All welcome.
tablelandukulelegroup@gmail.com
 Dale 0407 651 090

YBI Concert – 4pm (2nd Sun of the month), live

music at the Yungaburra Rotunda (Yungaburra
 Hotel if wet). Free event. FB: [YungaburraRotunda](https://facebook.com/YungaburraRotunda)

WE ARE FULL!

Contact us to join the waitlist

local business directory

Support local, shop local!

Massage Therapist

Janelle Moses

0418 889 773

Shop 2, Jack Street

Business Centre ATHERTON



AEO – Annie's Essential Oils

Always Empowering Others

0407 982 002

Healing Touch

Raindrop Technique

Essential Oils

Sound Healing

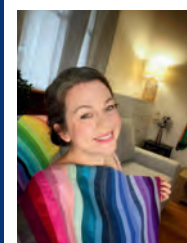
Hot Stone Massage

Workshops

Malanda Wellbeing Centre

19 James St, Malanda 4885

Email: aeo.taichi@gmail.com



www.havencolouranalysis.com.au

40 Mabel Street, Atherton

Opening times:
 W & Th 8.30am to 1pm
 2nd & 4th Sat and Sun
 10am to 1pm
www.artsnexus.com.au
www.youcancreate.com.au

HOME OF:

Accredited Mental Health & Expressive
 Therapy Social Work Practitioners

Psychological & Play-based
 Therapy & Assessments

Medicare Rebates Available
 NDIS provider

19 James St. Malanda Ph: 0475 618 756
 E: info@birdwingtherapies.com.au

Visit Alyson & Kath at
 1914 Chewko Road, Walkamin

open 7 days a week, 9am - 3pm

☎ 0439 371 399
 ✉ info@spottedquollnursery.com.au

COMMUNITY

Alcoholics Anonymous – 7:30pm (Mon) CWA Hall, Wilkes St, Mareeba. 6:30pm (Tue) CWA Hall, Malanda. 7pm (Sat) CWA Hall, Jack St, Atherton. Support group for people wanting to stop drinking. 0419 757 035

Alliance Française d'Atherton – 4-6:30pm (Tue) & 4:30-6:45pm (Thu). Atherton Community Centre, 42 Mabel St. French conversation and language classes. French themed events. alliancefrancaise.atherton@gmail.com 0407 708 435

Atherton Tableland Mineral & Lapidary Club 5:30-9:30pm (Mon), 8-4pm (Wed), 8am-1pm (Sat). Racecourse Rd, Tolga. 0417 746 630 atmlc679@gmail.com

Board/Cards Games Group – 9am (Thu), ECHO, 13 Eacham Place, Malanda. All welcome. Free. 4096 6634

Family Drug Support – 5:30-7:30pm (4th Thu of month), Atherton Community Hall, Jack St, Atherton. Shammah 0490 799 180

FNQ Community Exchange (Tablelands LETS) – Meet regularly to barter and exchange skills and knowledge. Find out more at fnqces.org

Highland Restorers Club – 7-9am (Sun), Yungaburra Pit Stop Servo. Vintage and classic motorcycles and cars. Don 0417 707 693

Atherton Lions Club – 6pm for a 6:30pm start. (2nd & 4th Tue of the month). Atherton International Club. 0419 547 146

Malanda Lions Club – 6:30pm (1st & 3rd Wed of the month). The Top Rail, Malanda. 0456 368 245

Mareeba Lions Club – 6:30pm (1st & 3rd Tue of the month). Mareeba Leagues Club. 0488 591 318

MAS Choir – 3:30-4:30pm (Thu). Accompanied, non-audition group performing several times a year around Herberton. Free to participate. Chapel at Herberton Historic Village. Mary 0418 182 197

Tolga Lions Club – 7pm (3rd Tue of the month). Tolga Tennis Courts Clubhouse. 0459 088 059

Men's Shed Atherton – 8am-12pm (Mon-Fri). 1 Railway Ln, Atherton. 0403 560 440

Men's Shed Herberton – 7am-2pm (Tue & Thu). Herberton Railway Station, John St, Herberton. Judy 0411 279 152

Men's Shed Malanda – 9am-12pm (Mon, Wed, Fri). 21-23 Mary St, Malanda. Clem 0457 885 737 or Mike 0436 360 044

Men's Shed Mareeba – 8:30am-12pm (Mon, Wed, Thu). 26 Lloyd St, Mareeba. 0499 229 986

Men's Shed Ravenshoe – 9am-3pm (Wed-Fri). 52-56 Herbert St, Ravenshoe. G.Rae 0467 960 362

Men's Shed Yungaburra – 2-6pm (Tue & Thu). Yungaburra Memorial Shed, 7 Barrine Rd. Jeff 0448 168 674

QCWA Malanda Craft Group – 9am (Thu) Catherine St, Malanda. Morning tea provided. All welcome. Daune 0458 499 129

QCWA Ravenshoe – 12pm (every 1st Tue of the month) 15 Herbert St, Ravenshoe. ravenshoebranch@qcwa.org.au

Rotary Club of Atherton – 6pm (every 2nd & 4th Tue of the month), Atherton International Club. 0448 750 353

Seniors Group – Meet twice monthly. Various social activities. Singles and couples welcome. Heather 0458 316 081

Soroptomist International – 5:30pm (2nd & 4th Tue of the month), Atherton Hotel, Main St, Atherton. Elspeth 0418 728 614

SWELL (Senior Women Enjoying Later Life) 9:30am (Fri) Baptist Church Hall, Cnr Gibson and Lloyd St, Atherton. Guest speakers, excursions, laughter. Rene 0400 675 729

The Grove Activities Centre – 9am-2pm (weekdays), 11 Grove St, Atherton. See calendar: tclink.org.au/thegrove/

U3A Atherton Tablelands – 9:30am (Mon). Room 22, Community Centre, 42 Mabel St, Atherton. Check website for event details. 0400 660 026 or athtablends.u3anet.org.au

Women's Survivor Group – Meet fortnightly at Atherton CWA. For women of all ages impacted by violence or harm. Coffee, connection, craft. Free. Tablelands Sexual Assault Service 4091 4036

Women's Welcome & Well-being – 9am-12pm (Tue) Girl Guides Hall, Robert St, Atherton. Different activities each week. Sue 0400 885 586



INGREDIENTS

2 kg chicken wings (skin on)	1 tsp soy sauce
5 oranges (juice and a little zest)	1 tbsp Dijon mustard
1 garlic clove, finely grated or crushed	Pinch of salt and pepper
3 tbsp marmalade	Optional: 1-2 tbsp olive oil (for the wings)
1 tsp honey	

Recipe of the month

Sticky Orange-Glazed BBQ Chicken Wings

METHOD

1. Zest a little orange (about 1-2 tsp) and set aside. Juice oranges into a saucepan then add the zest, garlic, marmalade, honey, soy sauce, Dijon, salt and pepper.
2. Bring the mixture to a gentle boil, then reduce to a simmer for 20-25 minutes, stirring occasionally until thickened into a sticky, syrupy glaze that coats the back of a spoon.
3. Preheat the BBQ to low-medium heat. Lightly coat the wings with olive oil and a pinch of salt and pepper.
4. Cook the wings with the hood down for 10-15 minutes, turning once, until they start to colour.
5. Baste the wings with the glaze, turning and brushing every few minutes for 10-15 minutes until the wings are sticky, glossy and cooked through. Rest for 5 minutes before serving.

Recipe of the month courtesy of Tablelands to Tabletop



what's happening, when & where!



ART • CRAFT

Handwork Craft Group – 9am-12pm (Tue)
Old Post Office, Herberton Rd, Atherton.
Karen 0427 698 267

Mareeba Craft on the Fringe – 9:30am-12pm
(Tue) Centenary Park, Byrnes St, Mareeba.
pederulla@hotmail.com

Mareeba Art Society – 10am-2pm (daily)
MAS Gallery 58 and shop open. 345b Byrnes St,
Mareeba. 0415 852 744

–9am-12pm (Mon) Painters in the Park
–9am-12pm (Tue) Craft & Cuppa, Craft Share
–9:30am-12pm (3rd Sun of the month)
–Beginners Painting 5pm (every 3rd Tue of the
month). MAS monthly meeting, all welcome.

Mend Make Create – 9am-12pm (1st Sat of the
month), CWA Hall, Kehoe Pl, Yungaburra. Uncover
the secrets of sewing with expert tips! By donation.
0438 572 207 or vberry@westnet.com.au

Social Stamping Papercraft – 1-4pm (4th
Sat of the month, exc. Dec and Jan) Venue TBC.
\$5pp, BYO projects. Tea and coffee provided.
RSVP please. Lauren 0408 913 677

NATURE • PLANTS

Atherton Seedsavers & Gardening Group –
Meet every 2nd month, various locations.
athseedsavers@urbanfox.com.au

Let's Grow Julatten & Molloy Garden Club –
8am (Tues), Ahoy Mt. Molloy Coffee Shop or a
member's garden.
Ying Tee: eatgrowlove75@gmail.com

Malanda Community Garden – 9am (Mon),
ECHO, 13 Eacham Place, Malanda. All welcome.
Free. 4096 6634

Millaa Millaa Garden Group – 8am (Mon),
Meet to maintain gardens and finish at 10am for
coffee/cake at Rumours Cafe.

Tableland Branch of Native Plants Qld –
7:30pm (4th Wed of the month), Tolga CWA Hall.
Bush excursion following Sun of the month.
Peter 0418 719 748 or Chris 4091 3082

**TREAT Rainforest Tree Nursery &
Revegetation** – 8-11am (Fri) QPWS Nursery,
McLeish Rd. Lake Eacham.

Yungaburra Landcare – 8-10am (Fri), Allumbah
entrance, Penda St. Morning tea afterwards.
David 0400 005 085 or Paul 0419 716 196

Tableland Garden Group – 2pm (2nd Sat of the
month), tablelandgardengroup@outlook.com

KIDS • YOUTH

Atherton Basketball Assoc – from 4pm
(Tue, during school terms). Atherton State High
School Hall, Maunds Rd, Atherton.
athertonbasketballassociation@gmail.com

Atherton District Girl Guides – from 3:30pm
(Mon during school terms), ages 5+, Girl Guide Hall,
Robert St, Atherton. 0428 914 758

Atherton Junior Golf – 8-11:30am (Sun)
competition day, 4-5:15pm (Wed & Thu) practice.
Ages 5-17yrs, Atherton Golf Club.
athertonjunorgolf@outlook.com
FB/web: atherton golf club

Atherton Mainly Music – 9:30-11am (Mon)
Atherton Baptist Church Hall, Gibson St. Early
childhood educational playtime and activities.
Morning tea. \$6 per family. Coral 0414 380 263

Tablelands Home Education – Gatherings for
homeschooling families (every Thu). Times and
locations vary. FB: Tablelands Home Education
tablelandshomeed@gmail.com

Early Years Place (EYP) Playgroup –
9:30-11:30am Tues, Wed (fortnightly) & Thurs.
Ages 0-8, all welcome. Dimbulah Community
Centre, 16C Raleigh St, Dimbulah. FREE. Find us on
FB or 4093 5444

local business directory

Support local, shop local!

Mareeba
Leagues
Club



'Supporting our Local Community'

OPEN 7 DAYS



OPEN FROM 10AM
DAILY LUNCH 11.30AM - 2PM

DINNER
SUN - WED FROM 6PM
THURS - SAT FROM 5.30PM

ALL DAY DINING
FRIDAY & SATURDAY

DOYLE STREET, MAREEBA

4092 2922



HIGH POINT
MEDIA

Social media management
for local businesses

Content, posting & strategy

Atherton Tablelands | 0405 525 000

CROSS STITCH &
QUILTING CORNER

Phone & mail orders available.
Hope to hear from you soon.

☎ 4096 5109 🧵

Rural No. 10 Hillcrest Rd MALANDA
(corner of Hillcrest Rd & Millaa Millaa-Malanda Rd)
cross-stitch-corner.com.au

SHE SHE'S in HER
ELEMENT

Beauty, Body & Skincare
Head Spa
Wellbeing & Relaxation

2 Quincean Close,
Yungaburra
0408 327 658

DAY SPA

Takeaway, Dine in, Catering
Gluten Free & Vegetarian Options

SILO SUSHI

Japanese & Asian Foods

Phone Orders Welcome!
4091 1769

3B Silo Central Shopping Centre
Atherton

Soul Skin Alchemy

INTEGRATED BEAUTY

Experience the alchemy of mind, body,
& soul - where beauty & healing meet.

- Signature Facials
- Massage
- Advance Skin Treatments
- Intuitive Soul Healing
- Beauty & Waxing



(07) 4095 0167 | 22 James Street, Malanda | info@soulskinalchemy.au



This ad space could be yours!

To chat about advertising
email
info@whatsontablelands.com.au



Shop local at the businesses we love!



My Pantry

8 Main St, Atherton
4091 3714

mypantry.online

My Pantry, Your Pantry!
Homecooked country food.
Take-away and bake at home.
Savouries, gluten free and sweets.
Freshly made or frozen ready meals.



Tablelands to Tabletop

41 Strattmann Street, Mareeba
0419 719 487

Autumn vibes = hearty meals and fresh flavours. Fill your kitchen with seasonal fruit and veg from the Tablelands, backed by local growers and a community-first food mission. In-store shopping or order online.



Pink Pineapple Eats

Shop 6, 34-36 James St, Malanda
4095 1316

Delicious menu, made fresh daily! Pizzas with loaded toppings, modern burger bar, southern fried chicken packs, specialty iced drinks, bubble tea, frappes, espresso and more. Locally owned and operated. Private and corporate catering available.



Uptown Music Atherton

7D Herberton Rd, Atherton
4091 2874

Brass and woodwind instruments including Yamaha, Steinhoff and Ida Maria Grassi. New and second-hand available, plus violins, violas and cellos. Music stands, books and accessories also in store.

The best little music shop in the mountains!



Our Wildest Dreams

31 Main St, Atherton
4001 2966

ourwildestdreams.com.au

Exclusive Australian Designers.

Unique Clothing, Gifts and Quality Leather Accessories.



Artistree Gallery

14 Kehoe Pl, Yungaburra
4095 3269

artistreegallery.com.au

High quality, beautiful, sustainable, handcrafted items from a diverse range of local artists.



Cowgirl Country

67 Main St, Tolga OPENING 11 April!
0400 801 508

cowgirlcountry.com.au

Unique, one-off creations. Cowhides, exotic hides, country themed toys, clothing, décor, gifts and more.



Winter & Mann

2/30 Cedar St, Yungaburra
0431 200 684

winterandmann.com.au

A selection of premium Australian fashion, art, and gourmet food. Showcasing exceptional creators from across the country and our local region. Open 7 days.





Faces of the Tablelands

Connect Her International Women's Day Luncheon, Atherton International Club, 6 March 2026

Photography by Virtually Done Social Studio



Gorgeous Gifts for Yummy Mummy's!

We send OZ Wide!



We Shout Liqueur Samples!

Atherton. Mareeba. Port Douglas. Cairns. Townsville

coffeeworks.com.au



Markets

On the Tablelands



Archer Creek Markets - Ravenshoe Lions Club

2nd Sunday of the month
7am-12noon
Archer Creek Rest Area,
Kennedy Highway

Atherton Markets

1st Saturday of the month
6am-12noon
Lutheran Church, Golf Links Drv

Atherton Undercover Markets - Atherton Lions Club

2nd Sunday of the month
7am-12noon
Atherton Showgrounds

Dimbulah QCWA Markets

3rd Saturday of the month
8am-12noon
Dimbulah QCWA Grounds

Julatten Markets

3rd Sunday of the month
(Apr-Dec), 2pm-5pm
Geraghty Park Hall

Koah Monthly Market

1st Saturday of the month
8am-12noon
Koah Hall, 322 Koah Road

Kuranda Community Market

2nd Sunday of the month
9am-1pm (closed until May)
Kuranda Amphitheatre

Kuranda Markets

Original Rainforest Market:
Daily, 10am-3pm

Kuranda Heritage Markets:
Wed-Sun, 10am-3:30pm

Malanda Markets

- Malanda Lions Club
3rd Saturday of the month
7am-12noon
Malanda Showgrounds

Mareeba Markets

- Mareeba Lions Club
Every 2nd & 5th Saturday
of the month, 7am-12:30pm
Centenary Park

Mt Molloy Markets

1st Saturday of the month
(Mar-Dec), 8am-12noon
Fraser Road, Mt Molloy

Tolga Markets

1st Sunday of the month
7am-12noon
Morrow Park Racecourse

Tumoulin Country Markets

4th Sunday of the month
(Jan-Nov), 8am-1pm
Tumoulin Railway Station

Wondecla Markets

3rd Sunday of the month
7am-12noon
Wondecla Sports Ground

Yungaburra Markets

4th Saturday of the month
7:30am-12:30pm
Bruce Jones Market Grounds

Contact the market organisers for more information



- Gifts for Her
- Gifts for Him
- Children's Toys
- Home Decor
- Souvenirs

Open 7 days ♣ Found inside the Mareeba
Heritage Centre, 345 Byrnes Street, Mareeba

www.mareebaheritagecentre.com.au



FARMHOUSE Café

OPEN DAILY 10AM-4PM

(Closed February. Check website for exceptions)

Home of the finest Ice Cream, Cheese & Yoghurt

Lunch • Cake • Coffee • Devonshire Tea



254 Brooks Rd, Millaa Millaa | 07 4097 2400 | mungallicreekdairy.com.au



Mortgage by Design

- | | |
|-----------------------|-----------------|
| Investment purchases | Refinance |
| First home buyers | Free service |
| Personalised strategy | Ongoing support |

"Making dreams a reality"



Sasha Gill

Loan Designer

0432 359 121

sasha@mortgagebydesign.com.au

www.mortgagebydesign.com.au



MALANDA MOVIES

2-8 April

Project Hail Mary (M), The Super Mario Galaxy Movie (PG), Hoppers (PG)

9-15 April

The Super Mario Galaxy Movie (PG), Hoppers (PG),
The Magic Faraway Tree (PG)

16-19 April

The Super Mario Galaxy Movie (PG), Hoppers (PG),
The Magic Faraway Tree (PG)

24-25 April

The Super Mario Galaxy Movie (PG), Hoppers (PG),
The Magic Faraway Tree (PG)

April Movies

For session times, go to majestictheatre.com.au
or call the movie info line on 4096 5726

Majestic Theatre Malanda, 1 Eacham Place, Malanda

CHECK WEBSITE FOR SHOW TIMES

mareebadrivein.com.au

SLEEP OUT AFTER THE MOVIE



0475 162 040
5303 Kennedy Hwy
MAREEBA

CAFE ONSITE
Serving classic burgers,
snacks & drinks



what's on
TABLELANDS