

# what's on

## TABLELANDS



**Malanda Show 26-28 June, 2026**

Show & School Holiday issue | The Dirt – Winter Gardening | Mountain Bike Trails  
Community Calendar | Event Highlights | Tales of the Tablelands | Markets

# Enchanted Fields



## Sensory space

### @ Atherton Show

9am–8pm Monday 29 June

9am–2pm Tuesday 30 June

Site 19 Atherton Showgrounds  
(near Louise Street entrance)

Tablelands Regional Council is once again hosting the Sensory Space at the 2026 Atherton Show, with this year's theme being **Enchanted Fields**.

Step into a gentle, garden-like setting with glow-in-the-dark features, soft music and fun sensory activities.

The **Enchanted Fields** Sensory Space is a calming experience with reduced noise and free of flashing lights to help reduce sensory overload.

*Proudly brought to you by*





Welcome to the June issue of What's On!



We're excited to welcome you to our June issue, as winter arrives across the Atherton Tablelands.

We're looking forward to cool, crisp mornings and the iconic smell

of fireplaces warming homes across the region. The cooler months have arrived, bringing with them a packed calendar of regional events and community gatherings.

Inside, you'll find all the details for June, including the full programs for the Atherton and Malanda Shows as we come together to enjoy the charm of a traditional country show and some good old-fashioned country fun.

This issue also features plenty of local stories and practical inspiration, including winter gardening on the Atherton Tablelands, the story of Atherton Forest Mountain Bike Park, and plenty more to explore.






Thank you for supporting local and being part of our community.

Happy reading!

Mia Bain

[www.whatsontablelands.com.au](http://www.whatsontablelands.com.au)

Want to be part of *What's On Tablelands* and promote your business or event? Let us help! Contact us for rates and to book advertising:  
[info@whatsontablelands.com.au](mailto:info@whatsontablelands.com.au)

Front Cover	Baylee Bevan		0408 882 338
Photographer	Feathers & Lace Photography		<a href="mailto:info@whatsontablelands.com.au">info@whatsontablelands.com.au</a>
Editorial/Design	Mia Bain		PO Box 1235, Tolga Qld, 4882
Media/Content	Dominique Bain		Whats On Tablelands
Circulation:	8,000 across the Tablelands		@whatsontablelands

We acknowledge the First Nations people who have owned, cared for, protected and nourished this Country where *What's On Tablelands* is created and distributed. We recognise their continuing connection to Country and pay our respects to their elders past, present and emerging.

*Publisher's Note: Views expressed are not necessarily those of the publisher or its advertisers. Information contained in this magazine is subject to copyright and may not be reproduced, copied or transmitted in any form or by any means without prior written consent from What's On Tablelands. While every endeavour has been made to ensure accuracy, the publisher cannot be held responsible for any errors, changes or omissions.*



## win! win! win!

Enter to win  
a \$100 Shop  
Tablelands  
Gift Card!



Entries close 24 June 2026  
Enter online at: [www.whatsontablelands.com.au](http://www.whatsontablelands.com.au)

\* Terms & conditions apply.  
See *What's On Tablelands* website for details.



Canola Field, Dominique Bain



# Atherton Forest Mountain Bike Park

How riding in the forest near Atherton resulted in a 60km mountain bike park – and what's next

For many locals, the Herberton Range State Forest is a great place to walk, ride, or drive while enjoying time in nature. What's less obvious, unless you are a mountain biker, is the network of trails known as Atherton Forest Mountain Bike Park and just how long it took – and how many people were involved – to turn this patch of forest near Atherton into a valued outdoor recreation space.

For local rider and long-time cycling advocate David Prete, the park reflects close to 30 years of involvement. From early conversations and site walks through to today's focus on keeping the trails in good shape and planning for the future, he's worked alongside volunteers, councils, government agencies and Traditional Owners to help turn a shared idea into a place the community can enjoy.

## Where it all began

The seeds of the park were planted back in the 1990s, when Far North Queensland showed it could host

major mountain bike events, including the 1996 World Cup downhill in Cairns. Those events sparked bigger conversations: *could mountain biking support regional towns, bring visitors, and create lasting benefits for places like the Atherton Tablelands?*

Through the early 2000s, those ideas gathered momentum. Local riders, tourism advocates and industry leaders explored what was possible around Herberton. Tableland Cycle Sports was formed to give the work a strong community base, and the concept was shared with land managers, councils, Traditional Owners, and government agencies.

By the end of that decade, the focus shifted from "could this work?" to "how do we make it happen?" Business cases were developed, partnerships formed, and expert advice sought. In 2011, that work resulted in a formal concept plan that mapped out trail corridors, standards, and a staged approach to development.

## Trails on the ground

The real breakthrough came in 2012, when funding of \$1.3 million was secured to build the first stage of world-class trails in Herberton Range State Forest. Once open, the park quickly proved its value, hosting events, attracting visiting riders, and becoming a regular destination for locals.

## Adapting and growing

Following governance refinements, cyclone recovery, and new partnerships, the park entered its next phase. In 2024, a full-time trail care crew was established a first-of-its-kind model that has attracted national attention.

## Why it matters

Atherton Forest Mountain Bike Park is more than a place to ride – it's a regional asset. An economic study in 2019 estimated the park was generating around \$2.5 million a year for the local economy. The current focus is to secure government funding to implement the expansion of the trail network and enhance the management and maintenance structures. Looking ahead, the aim is simple: care for what's been built, strengthen partnerships, and make sure the next chapter delivers lasting benefits for the Tablelands.

**SPECIAL EDITION** **Tin Miners News** **SPECIAL EDITION**

# IRVINEBANK

FRI 31<sup>ST</sup> JUL **SAT 1<sup>ST</sup> AUGUST** SUN 2<sup>ND</sup> AUG  
EVENTS START WITH FRIDAY NIGHT OPEN MIC AT THE HALL  
AND FINISH WITH A RECOVERY BREAKFAST ON SUNDAY

COME AND CELEBRATE OUR RICH HISTORY AND OUR BEAUTIFUL LITTLE HERITAGE TOWN

WALKAMIN COUNTRY MUSIC CLUB, AND MUCH MORE

**JEREMY FLETCHER BAND SATURDAY NIGHT**

**MARKETS, BAR & FOOD, BRIAN'S SHED, LOUDOUN HOUSE MUSEUM, TOURS, HAND STEEL DEMONSTRATION, BUSH POETRY HARRY'S STUDIO OF COLLECTABLES AND PAPER MODELS**

**LIVE MUSIC. OPEN MIC FRI EVENING. FREE CAMPING, CEMETERY GHOST TOUR.**

**HISTORICAL DISPLAYS, FAMILY FUN, FISHING COMP FOR THE KIDS, TUG O WAR, BLACKSMITHING, TIN SCRATCHERS BAR, FOOD VANS**

WEAR AN HISTORICAL COSTUME

## BACK TO IRVINEBANK

# JOHN MOFFAT FESTIVAL 2026

This article was contributed by Tableland Cycle Sports Inc, a volunteer-run club supporting mountain biking and road cycling across the Atherton Tablelands. Learn more at [tablelandcyclesports.com](http://tablelandcyclesports.com).



# Tableland Ukulele Group

TUG shares the joy of the Ukulele

The ukulele has been a happy part of life since the late 1870s, developed by Portuguese immigrants to Hawaii. The Tableland Ukulele Group has not been around for quite that long! The first meeting of TUG was on 21 January 2012, at the Atherton Primary School, with about a dozen people attending. Over the years, TUG has been hosted by the Tree Kangaroo Café and the Uniting Church Hall in Malanda, before moving to the Carinya Wellness Centre.

Members have attended workshops, participated in festivals, and performed at many different venues over the years. Both membership and repertoire continue to grow as the popularity of playing ukulele increases. A wonderful way to learn new skills, improve brain-hand-eye coordination, decrease stress, make friends, and have fun!

The RRR Ukefest is one of the highlights of the year for TUG. Held at the Kydobi Country Park near Bibohra, ukulele players from Queensland and beyond converge to play and learn over three days from the 8th to the 10th



of August 2026. The coordinators, Dale and Richard, have organised guest presenters, entertainment, and opportunities for groups and solo players to perform. This event is suitable for all skill levels, so grab a ukulele and join in. In the words of George Harrison "Everyone should have and play a uke...it is one instrument you can't play and not laugh."

To contact TUG, email [tablelandukulelegroup@gmail.com](mailto:tablelandukulelegroup@gmail.com), and for the RRR Uke Fest email [rrrukefest@gmail.com](mailto:rrrukefest@gmail.com).





Monday 29th &  
Tuesday 30th June

### All Day Attractions Monday & Tuesday

- Fields of the Future - Rare Trades, Meet the Makers
- Fields of the Future - Meet the Growers on Agriculture Avenue
- Amusements Plus Animal Farm
- Wildlife Instinct
- Small Garden Display
- Burrawong Nursery Hanging Basket Competition
- Main Arena - Events and Entertainment
- Side Show Alley
- Showbag Lane
- Poultry Pavilion
- Stud Beef Pavilion
- Merriland Pavilion
- Trade Stalls and Exhibitors
- Arts, Crafts and Horticulture Exhibits
- Sensory Room by TRC
- Emergency Services Demonstrations
- Connect with Frank Finger, Jonty Benny & Nathan Obst and the Working Dogs



**Sensory Session**  
**& Inclusion Program**  
**9am to noon**  
**Monday 29th**  
**Calmer Quieter**

**\$10** for disability, pension and Veteran Card Holders.  
(Companions and Carers Free - Must hold valid companion card)

*Thank you to our main Sponsors and Supporters*





Pre-Purchase  
& SAVE!

ATHERTON SHOW  
BONUS DOLLARS  
\$30 SHEET FOR \$25  
FOR USE IN SIDESHOW AREA

2 DAY EVENT PASS  
Family Pass \$65  
2 Adults and 2 children  
Save \$75

2 DAY EVENT PASS  
Quick Pack \$140  
Family Pass + \$90 Bonus  
Dollars

2 DAY EVENT PASS  
Child/  
Pensioner \$25  
Save \$5

2 DAY EVENT PASS  
Adults \$35  
(single entry) Save \$25



Gates open 9am

Monday Timed Events - Main Arena

- 8:00am - Horse Events
  - 9:00am - Stud Beef Judging  
Junior Beef Paraders
  - 4:15pm - FNQ Trick Riders
  - 4:45pm - Airtime FMX
  - 5:30pm - Six Bar Show Jumping  
Competition
  - 6:30pm - Avo-Ca Dash Competition
  - 7:10pm - FNQ Trick Riders
  - 7:30pm - Show Opening
  - 7:50pm - Airtime FMX
  - 8:30pm - Fireworks
  - 9:00pm - Main Bar Emily McGuigan
- \*\*Times may vary on the day\*\*

Tuesday Timed Events - Main Arena

- 8:00am - Horse Events
  - 9:00am - Junior Judging Beef Cattle
  - 12:15pm - FNQ Trick Riders
  - 12:45pm - Airtime FMX
  - 1:15pm - FNQ Trick Riders
  - 2:00pm - Grand Parade
  - 3:00pm - Working Dog Demonstration  
with Frank, Nathan and Jonty
  - 3:30pm Airtime FMX
- \*\*Times may vary on the day\*\*



Help Bring  
the Show to  
Town!

- Volunteers
  - Members
  - Sponsors
  - Trade Sites
- NEEDED**



# DAIRY FARMERS MALANDA SHOW

EST 1916



# 2026

## FRIDAY

- |   |   |
|---|---|
| <b>8.00 am</b> Dressage Judging commences   | <b>4.30 pm</b> Junior Prime Beef Cattle Judging competition in the Prime Cattle Yards   |
| <b>9.00 am</b> All Breeds Dairy Youth Challenge - Ted Morris Judging Arena                            | <b>7.00 pm</b> <b>Malanda Street Parade</b><br>The theme for this year's Parade is "Famous Roads".<br>Music at Stage 2 Bar - Musician Matty Hoare<br>Show Officially opened by Petrina Callaghan<br>Elders insurance Rural Ambassador Competition Announcement at the Grandstand<br>Malanda Gymnastics Cheerleading Squad Performance |
| <b>10.00 am</b> Showjumping Events Commence   |   |
| <b>11.45 pm</b> Dairy Young Judges Competition Ted Morris Dairy Arena                                 |   |
| <b>12.00 noon</b> <b>Malanda Show is Open to the General Public</b><br>Melvilles Animal Nursery Opens |   |
| <b>2.30 pm</b> Junior Judging Stud Cattle Arena   |   |

## SATURDAY

- |   |  |
|---|--|
| <b>8.30am</b> Stud Beef Junior Paraders competition, followed by Led Steer & Heifer Competition<br>Centre Ring Events commence – including Halter Classes, Galloways, Junior Riders & Showjumping | <b>10.00am</b> <b>Nigerian Dwarf Goat Competition Judging</b>                                      |
| <b>9.00 am</b> Dairy Cattle Paraders and Judging commences in Ted Morris Dairy Arena  | <b>11.00 am</b> Ridden Horse Events commence in Centre Arenas                                      |
| <b>9.30 am</b> Stud Beef Cattle Judging commences in Beef Cattle Arena<br><b>Woodchops at the Marty &amp; Joan Conole Woodchop Arena</b>  | <b>12.00pm</b> 'Superdogs' Dog Obedience Display by Tableland Dog Obedience Club (Main Arena)      |
|   | <b>4.00pm</b> Presentations for Prime Cattle and Junior Stud Beef at the Prime Cattle Selling Ring |

# SATURDAY NIGHT

<b>6.00 pm</b>	Six Bar Show Jumping Competition in Main Arena Followed by the <b>Strategic Builders Farmers Challenge</b> in the Main Arena
<b>7.00 pm</b>	Live Entertainment <b>Sponsored by Strategic Builders</b>
<b>8.30 pm</b>	<b>The Big Pub SPARtacular Fireworks Display</b>

## SUNDAY

- |   |   |
|---|---|
| <b>8.30 am</b> Centre Arena Events commence - Showjumping & Hack Events | <b>11.30 am</b> Grand Parade (Main Arena) followed by the <b>Dairy Farmers Charity Celebrity Hand Milking Competition (Front of Grandstand)</b> |
| <b>9.00 am</b> <b>Local Poultry Young Judges Competition</b>            |   |
| <b>9.30 am</b> <b>Nightingale Real Estate Woodchopping Competition</b>  | <b>12.30 pm</b> Nutrien Ag Series Showjumping   |
| <b>9.30 am</b> <b>Pet Parade - Ted Morris Arena</b>                     | <b>1.30 pm</b> Show Jumping Grand Prix  |
|   | <b>3.00 pm</b> Show Closes  |



# JUNE 26<sup>TH</sup>, 27<sup>TH</sup>, & 28<sup>TH</sup>

FIRST WEEKEND OF SCHOOL HOLIDAYS

**3 Day Family Pass \$85!**



[www.malandashow.com.au](http://www.malandashow.com.au)





# Kids on the Tablelands

**Maggie Reid explores school holiday fun without breaking the budget**

**The Tablelands comes with one big advantage – some of the best adventures are either free or very low cost. You don't need expensive theme parks or packed itineraries to keep kids entertained. Sometimes all it takes is a packed lunch, a towel in the car, and a bit of local exploring.**

The Tablelands is full of easy day trips that feel like an outing without blowing the weekly budget. Lake Eacham remains a favourite for a reason, with calm swimming, picnic areas, walking tracks, and plenty of space for kids to run around. Nearby spots like Peterson Creek in Yungaburra are perfect for a slower morning, especially if the kids are lucky enough to spot turtles or a platypus.

Waterfall hopping is another affordable school holiday option. The Millaa Millaa Falls circuit makes for an easy half-day adventure, and kids usually care less about sticking to a schedule than adults do. Add snacks, music in the car, and a stop at a local bakery makes it suddenly it feels like a proper holiday outing.

For families trying to fill time without constantly spending money, local libraries and art galleries are often overlooked. School holiday programs, craft sessions, reading corners, and free activities can easily break up a long week at home. Atherton, Mareeba, and many other local libraries regularly host activities during the holidays, many at little or no cost.



Peterson Creek

If the weather turns, simple indoor activities can still feel special. A hot chocolate stop, op shop treasure hunt, or letting kids pick a second-hand book or board game can turn an ordinary afternoon into something memorable without spending much.

The Tablelands also suits families who like slower-paced outings. A walk around the markets, visiting a farm gate stall, spotting wildlife, or taking scooters to a local park or pump track can easily fill a morning. Kids often remember the small things most – climbing trees, spotting birds, collecting leaves, or finding the “best stick” beside a creek.

One of the easiest ways to manage school holidays affordably is to lower the pressure to make every day extraordinary. Not every outing needs tickets, entry fees, or hours of driving. Some of the best local days are the simple ones that happen close to home... and on the Tablelands, we're lucky to have plenty of options!

**ATHERTON**  
**FOOD CO-OP**  
EST. 2010

organic • biodynamic • local

**Fresh Produce & Groceries**  
**\* Not-for-profit \***

7E Herberton Road, Atherton | Ph 4091 1268  
Open Mon-Fri 9am-5.30pm, Sat 9am-1pm

*"Good food that doesn't cost the Earth"*



# The Dirt

Winter jobs in your Tablelands garden  
by **Kath Salter & Alyson Johnston**

Winter on the Tablelands is idyllic. Things still grow in the milder climate, but not at the frantic pace of summer. Whilst it is our dry season, we can usually rely on some lighter winter rainfall. The temperatures are perfect for growing veggies, herbs, edible flowers, and a great range of flowering annuals and perennials.

This is the time of the year when your veggie garden is packed to the rafters with pretty much every veg on earth. Before planting, use fertilisers based on rock minerals and microbes – about six handfuls per m<sup>2</sup>, and a little sprinkle of Dolomite over the soil surface. Veggies like liquid feeds as they are growing, and weekly or fortnightly feeding keeps them happy. A good tip is to find a guide on companion planting – like us, plants like to keep their friends close.

With the cooler weather, cut back watering indoors as well as outdoors, as overwatering will stress them. Your very expensive moisture meter (your finger!) will let

you know when to water. Watering is best done earlier in the day; imagine going to bed wet in winter! Late watering can cause rotting plants, fungal outbreaks, sliminess or infestations of mealy bugs.

It is a pleasant time to plant new shrubs and trees, as well as bare-root roses and fruit trees. They establish in milder weather before the blast of Summer and without you raising a sweat.

Pruning can sort out a lot of emotional problems, and the plants benefit from it too! Winter is a great time to cut the roses back hard, removing all dead, weak, spindly growth to an outward-pointing bud. The natives will appreciate a tip prune; use your fingers or small trimmers to remove the tips of their branches. Lilly pilly hedges are everywhere on the Tablelands, and they will appreciate a light trim too.

It's makeover time for hibiscus, fruit trees, and deciduous plants (plants that lose their leaves). A serious prune will

# Priors Creek Live!



**Priors Creek  
PARKLANDS**  
Mabi Way, Atherton



## Priors Creek Parklands Grand Opening 10 July 2026

*Get involved and experience Priors Creek Live!*

Atherton's new Priors Creek Parklands precinct will be a premier destination for family fun, interactive activities and a year-round calendar of events.

**Friday 10 July** — Grand opening and ribbon cutting ceremony at Priors Creek Parklands, followed by vibrant night markets, delicious food and live music under the stars.

**Saturday 11 July** — Full day of entertainment and activities for all ages. There's something for everyone!

**The stage is set. Get involved and help us put on the show!**

We'd love to hear from food and beverage vendors, entertainers, health and wellbeing providers, market stall holders and anyone who can join us to help bring Priors Creek Parklands to life.

Get involved at [trc.qld.gov.au/priors-creek-live](https://trc.qld.gov.au/priors-creek-live). For enquiries and suggestions drop us a line at [priorscreek@trc.qld.gov.au](mailto:priorscreek@trc.qld.gov.au).

Proudly brought to you by  Tablelands Regional Council

maintain their shape and tidy up their framework. So cut out branches that are dead, diseased, or wayward until it looks like a vase.

There are some beautiful conifers on the Tablelands, and they are best pruned in winter – but be careful not to expose the bare centre; just remove old wood and give them a general all-over tidy-up, no short back and sides.

One of the most dreaded jobs on the gardening calendars is the control of bindiis. It is a job best done when they are flowering before the sharp burrs develop later in the year. Our organic control is a bindii party – ask a group of friends over, put a drink in one hand, and a dandelion weeder in the other! Liming the soil is said to help too, but wait until the guests leave.

We talk a lot about microclimates in your garden and how sometimes you can grow unexpected plants in a cooler shaded corner or a protected warmer spot. This is especially important for our colder areas on the Tablelands, where frosts can occur. Sensitive plants such as our beautiful tropical rhododendrons (vireyas) should be moved to a warmer area if in pots, or protected by hessian bags or paper.

Loose straw can be thrown over the smaller seedlings and your flowering annuals. If a frost is forecast, you can water the soil the day before, as wet soil holds four times the heat of dry soil, and drought-stressed plants are more prone to frost. Once a frost occurs, try to minimise the impact by watering before the sun melts it.

Less mowing in winter means you have time to spend an afternoon on sharpening your tools and oiling handles; a little bit of love goes a long way. You will also have time to apply rust prevention products like Rust-Oleum to your garden art. This will help it last longer in the harshness of our tropical sun and rain. The spray-on cans make it incredibly easy to protect your investment.

The last thing to do in winter? Enjoy your garden! Head out to your magic spot where you can sip a cuppa, enjoy the native blue-banded bee on your Leptospermums, breathe, and let it all go.

Kath and Alyson welcome all gardeners at **The Spotted Quoll Nursery**, 1914 Chewko Road, Walkamin. Open 7 day a week. Call 0439 371 399. FB: The Spotted Quoll Nursery





*everything you need to create your perfect garden*

**Visit Alyson & Kath at**  
**1914 Chewko Road, Walkamin**  
 ☎ 0439 371 399  
 ✉ info@spottedquollnursery.com.au

*open 7 days a week. 9am - 3pm*

## Jobs to do now in: **Winter**

what's on  
TABLELANDS

### Prepare & feed soil

- Add compost, rock minerals and a sprinkle of dolomite before planting.
- Use liquid fertiliser weekly or fortnightly for healthy growth.

### Water wisely

- Reduce watering as temperatures drop.
- Water early in the day to avoid rot and fungal issues.

### Prune and shape

- Cut roses back hard, removing weak or dead growth.
- Tip-prune natives and lightly trim hedges.

### Plant now

- Leafy greens – lettuce, spinach, rocket.
- Brassicas – broccoli, cauliflower, cabbage.
- Herbs – coriander, parsley, dill.
- Root crops – carrots, beetroot, radish.
- Plant fruit trees, shrubs and bare-root roses.

### Protect from frost

- Cover sensitive plants or move to warmer spots.
- Water soil before frost to retain heat.

### Control bindiis

- Remove while flowering before burrs form.

### Maintain tools & garden

- Sharpen tools and oil handles.



**Take the time to slow down, get outside and enjoy your garden!**



# The Design & Build Series

“Our Silos”: A Vertical Leap of Faith, by **Jordana Wakelin**

**For many people, a dream home involves a wrap-around veranda, a modern designer kitchen, and a sleek cinema room. But for Mick and Kim Forde, their dream looked a little less like a floor plan and a lot more like a feat of engineering.**

When Mick and Kim decided to make the move to the Tablelands, they definitely weren't looking for a project. “We fell in love with the green rolling hills whilst marshalling for the Targa rally.” It was fate when they saw a for-sale sign – right in front of the Kairi Maize Silos. It wasn't love at first sight, but a curiosity about the quirkiness and opportunity. For those who know Mick and Kim, it was a perfect match! “They were these weathered, towering sentinels of the region's agricultural past, unloved and overlooked.” Today, they aren't just landmarks of our town's history – they are one of the Tablelands' most unique residences. They're heritage-listed due to their significance in our cultural and agricultural history, showing a high degree of creative and technical achievement as well as aesthetic significance.

Built in 1924 and constructed using sliding form concreting (later known as slip-form concreting), they are one of the earliest applications of this technique in the construction of maize silos in Australia.

When they moved in, their first priority was making the house safe to live in. Mick's Navy career with final rank as Warrant Officer placed him in excellent stead to not only feel comfortable scaling and navigating the structure, but also to assess the risks of the work to be done. He set about having floor grates installed to cover voids that fell into the depths of the tunnel beneath ground level, and repaired the internal elevator to working condition.

Approaching the house, a beautifully sculpted timber deck hugs the silos and glides to the entrance. I had a feeling of being tucked beside a city high-rise alfresco café. My eye was immediately led up the textured concrete walls of the silos, still in their original slip-form concrete condition, revealing not only the texture but various coloured drips of concrete slurry ranging from brown to cream with subtle hues of purple and blue.



The unique entrance

“They were these weathered, towering sentinels of the region’s agricultural past, unloved and overlooked.”



The silos standing proud in Kairi



Under the lounge

The open-plan living and dining area features a loft and bedroom in the two storeys above. The void overhead with double-height glass walls works exceptionally well to not only allow natural light into the space, but also celebrates the sheer scale of the silo walls that have been made visible from within.

Imagine your living room once being an industrial space where trucks would weigh in and deliver maize? The scales and signage still exist in situ for a little fun. The lounge room is built over the hopper where trucks would unload maize. Featured overhead are the thick, heavy steel drive shafts that would deliver maize to the top of the silos for sorting.

Being heritage-listed, the Fordes couldn't simply put doorways and windows in the concrete walls and change the iconic silhouette. They had to be very considered and deliberate in their approach to any modifications to the complex, as everything was subject to approval and assessment. A major achievement that the Fordes celebrate is the construction of their garage, being an exact model of the old bagging shed. Historically, trains would arrive on the old Tolga/Johnstone railway line to be loaded with maize, conveyed from the silos through the underground tunnel. It's an exceptional touch that Mick and Kim chose to build the garage to the same dimensions as the original structure, being another example of their guardianship over this heritage-listed structure.

No matter where you turn, the house has a sturdy, lofty calm with a twist of joyfulness that pays homage to the past. A variety of relics discarded into the underground tunnel have been brought to life as interesting features, such as old camel-hair conveyor belt maize buckets used

for unique storage solutions. Rescued silky oak timbers from the site also feature in the rustic kitchen cabinetry.

What can we learn from the Silo House? Perhaps it's that we should be more curious about our local history and continue to share these stories so they're not forgotten. Mick and Kim didn't choose the easy path, but they chose the one that resonated with them. Mick and Kim are interested in hearing from anyone who may have been an operator at the Silos to help them continue to curate the heritage history through oral story recording.

If you enjoyed this content, would like to see more stories like this and know of another grand design, heritage restoration, or owner builder story, I'd be delighted to hear from you.

Jordana is the principal agent and owner of family owned and operated real estate business, **Heart & Home Property**, located on the Atherton Tablelands.



Jordana Wakelin

Principal - Licence No. 4657704

0488 693 084

jordana@heartandhomeproperty.com.au

www.heartandhomeproperty.com.au

Sell with Confidence

Providing the Tablelands first  
*Tailorable & scalable*  
real estate service

- Low sales commission
- Providing custom real estate marketing solutions
- Enabling owners to DIY with private seller mentoring
- Marketing & managing holiday accommodation



# Tales of the Tablelands

---

**Mia Bain** shares the story of **Kate O'Brien**

---

**Approaching Guilfoyle's Funeral Home brings an immediate sense of calm. The grounds are beautifully cared for, private and quiet. Sitting across from Kate in her office, it is hard to imagine how many families have sat in that same room, carrying heartbreak, and how often she has been there to guide them through it.**

Kate is someone who sits comfortably in a space most people instinctively avoid. She carries her own grief alongside the grief of others in a way that feels present and respectful. There is no attempt to tidy it up or rush it along; she understands that grief is deeply personal and that it does not follow a timeline or a set of rules.

Her path into this work was not planned. It unfolded through life, through loss, and through a quiet sense of purpose that grew over time.

Kate's early years were spent moving across Australia. She was born in Newcastle and moved to Orange for a year before travelling with her family, following her mother's connections with churches across the country. Eventually, they settled in Innisfail, where her mother wanted her children to have a strong foundation in music. Life continued to shift, taking Kate to Herberton for some of her high school years and later to Toowoomba. After the passing of her mother, she and her sister made the decision to return north with their families, settling in Cairns.

Losing her mother, who was 54, was a defining moment for Kate. It was sudden and deeply felt, and even now Kate speaks of her with a sense of closeness. That experience shaped her understanding of grief early on, not as something to overcome, but something that becomes part of you.

Years later, in Cairns, Kate experienced the profound loss of her son Fletcher at just three months old. It was a time marked by urgency and uncertainty, with evacuations during Cyclone Yasi and hospital transfers between Brisbane, Townsville, and Cairns as medical teams tried to stabilise him. Even in those moments, she remembers small acts of kindness from people who showed up in simple ways, creating caring memories that she still reflects on from those dark and uncertain days. Fletcher was later found to have a rare genetic lung condition. The diagnosis brought answers, but it did not lessen the loss, which helped to shape what came next.



*Kate with Deacon (top), Ryleigh (right) & Spencer (centre)*

Kate became involved with SANDS, supporting other families who had experienced the loss of a baby. She volunteered her time and began sewing garments for hospitals, providing something small for families in those first moments of grief. Creating something with her hands became a way to process what she was going through and to give something back.

"I felt that channelling my grief into something helped me process what was happening," she says.

It was through SANDS that she attended a talk on grief held at a funeral home in Cairns. That experience opened a door to a path she had not previously considered, but one that, in hindsight, made complete sense.

Although Kate comes from a family of nurses and always felt drawn to caring for others, nursing itself never felt right. This role, however, sits naturally with who she is. It allows her to support people in a deeply human way, offering compassion and understanding without needing to fix anything.

A job opportunity brought her to the Tablelands, and she embraced it with a willingness to see where life might lead. What she found was a place that felt like home. It became somewhere she could raise her youngest son and build a life grounded in community. That sense of community is something she speaks about often. On the Tablelands,

people know each other. There is a level of connection that feels genuine, and during difficult times, that connection matters.

She encourages people to check in on one another, even when they do not have the right words. A phone call or a quiet conversation can mean more than people realise. There is no expectation to fix anything. Simply showing up can make all the difference, especially as time passes and the initial wave of support fades. Her work reflects that same approach. No two days are the same, but the intention is always consistent. Each family is different, and each farewell is shaped to reflect that.

“We want each farewell to feel right for the family,” she says. “You don’t do this for recognition. It’s about creating something personal and taking some of the stress away during that time.”

Outside of her role, she is a mother, a sister, and a friend. She wants people to feel comfortable speaking with her, not just when they need her professionally, but as part of the community.

Kate is passionate about breaking down the discomfort around conversations about death. She believes that talking openly about wishes and plans can ease the

**“You don’t do this for recognition. It’s about creating something personal and taking some of the stress away during that time.”**

burden on loved ones later on. It is not about being morbid, but about being prepared and allowing families to focus on what matters when the time comes.

Kate is also Vice President of the Atherton Rotary Club, continuing a strong thread of community involvement that began with her mother. Volunteering has always been part of her life, and she believes it is one of the most meaningful ways to connect with others.

“It’s very rewarding,” she says. “It costs you nothing, just a bit of your time.”

At home, Kate shares life on the Tablelands with her partner and youngest son Spencer, with Fletcher always being a part of their story. His short life continues to shape hers in ways that reach far beyond their family, influencing the care she gives to others every day.

There is a quiet strength in the way Kate moves through her work and her life. It is not loud or showy. It is steady, grounded, and deeply human. And while no one hopes to need her services, there is real comfort in knowing that if the time comes, she will be there for your family.

What’s On Tablelands is looking for a new Tales of the Tablelands writer. Email [info@whatsontablelands.com.au](mailto:info@whatsontablelands.com.au) to find out more.



The poster features a decorative border of roses and a central illustration of two women in vintage attire sitting at a table with a tea set. The text is arranged in a classic, elegant layout.

**HIGH TEA AND FASHION PARADE**

**VINTAGE VOGUE**

through echoes of elegance

**BRING YOUR OWN FANCY TEA CUP & PLATE**  
PRIZES FOR MOST ORIGINAL  
MOST ELEGANT  
MOST HUMOROUS

**RAFFLE & LUCKY DOOR PRIZES**

**25 JULY 2026**  
1.30PM START

**ATHERTON INTERNATIONAL CLUB**  
KENNEDY HIGHWAY

**TICKETS: \$45**  
**BOOK YOUR SEAT TODAY >>**

Atherton Rotary 





# June calendar highlights

Please be advised that event details are subject to change. Confirm details with organisers prior to event.

More events are added each week! Follow **What's On Tablelands** on social media to stay up-to-date.

SUNDAY 07 JUNE	<p><b>Car Boot Sale</b> Mareeba Animal Refuge Fundraiser Live music, face painting, food &amp; drinks, stalls am-12pm Mareeba Drive-in</p>	SUNDAY 14 JUNE	<p><b>Bush Dance</b> Authentic QLD bushdance with live band Tablelands Music Lovers Grainger Lane, Atherton 3-6pm (doors open at 2pm) Cash bar Adults \$10, Kids 16 &amp; under \$5, toddlers free</p>
THURSDAY 11 JUNE	<p><b>Trivia at Billycart Brewing Co.</b> Team trivia, locally brewed beer, food truck, prizes Atherton FREE EVENT</p> <p><b>Little Women – musical theatre production</b> Atherton Performing Arts Showing from 12-28 June Tickets prices vary trybooking.com/DLAEQ</p>	THURSDAY 18 JUNE	<p><b>Food Safari</b> Sample amazing local produce from across the region 10am-12pm Atherton Tablelands Information Centre</p>
SATURDAY 13 JUNE	<p><b>Race Day – Ladies &amp; Tradies</b> Horse racing, fashions on the field, wheelbarrow race, apprentice foot race, food &amp; drink, live auction Morrow Park Race Track Gates open 11am General entry \$15, Pensioners \$10, Kids free</p> <p><b>Sip &amp; Sing FNQ</b> A full-room singalong party with live music and drinks Atherton International Club 8pm–11:55pm Tickets \$35 on Humanitix</p> <p><b>Malanda Show Ball</b> Live music, food, cocktails &amp; main bar Malanda Dairy Centre Doors open at 7pm Tickets from \$80 at trybooking.com/DKGRC</p>	FRIDAY 19 JUNE	<p><b>NYX Festival</b> 19-22 June, Ravenshoe 4-day winter solstice celebration of music, art, and culture. Multiple stages, workshops, markets and camping. Tickets &amp; info: nyxfestival.com.au</p> <p><b>Roller Disco</b> 6pm-7pm under 10's &amp; Beginners 7pm-9pm over 10's &amp; Intermediate Atherton High School FB: Tablelands Roller Derby League \$5 entry</p>
		SUNDAY 21 JUNE	<p><b>Tableland Country Music Club Inc Family Day</b> Music, food, drinks Mareeba Leagues Club Music from 12-5pm FREE ENTRY</p>
		FRIDAY 26 JUNE	<p><b>Malanda Show</b> 26-28 June Livestock displays, equestrian events, woodchopping, sideshow alley, fireworks, rides, street parade, animal nursery and more. Tickets &amp; info: malandashow.com.au</p>



**YUNGABURRA**

**Lawn bowls in the heart of Yungaburra**

Mixed social bowls  
Wednesday & Saturday  
starting 1pm

Barefoot bowls  
4-7pm Fridays. Bar open

Cedar Street,  
Yungaburra

Phone for bookings and info:  
**40953596** 

or visit us on Facebook

**BOWLS CLUB**



The contact lens for your ear.™

Lyric is the world's only 100% invisible, extended-wear hearing device you can wear 24/7 for months at a time.



Lyric® PHONAK

**TRIAL LYRIC RISK-FREE FOR 30 DAYS**

**Ph: 1800 301 231**  
Suite 1, Marquis on Grafton  
125 Grafton Street, Cairns QLD 4870

**AUDIOHEALTH**  
hear well, live well



# save the date

## JULY

- 10-12 Gillies Range Centenary Celebration, Yungaburra
- 10-11 Priors Creek Parklands Grand Opening, Atherton
- 10-11 Mareeba Rodeo
- 17-19 Atherton Chamber Music Festival, Herberton
- 31 John Moffat Festival, Irvinebank

## AUGUST

- 22 Yungaburra Book Fair

## SEPTEMBER

- 6 Spring Art & Craft Fair, Atherton Showgrounds
- 19-20 Bushy Creek Makers' Fair, Julatten

## OCTOBER

- 8-11 Savannah in the Round
- 8 Great Northern Bullriding Series, Mareeba
- 10 Malanda Bullride
- 10-24 Torimba Festival, Ravenshoe
- 17 Jacaranda Festival, Herberton
- 23-25 Tablelands Folk Festival, Yungaburra
- 31 Halloween, Malanda

## NOVEMBER

- 7 Great Northern Bullriding Series, Atherton
- 19 Malanda Christmas Festival, Malanda

## DECEMBER

- 5 Carols by Candlelight, Atherton Showgrounds
- 31 New Year's Eve Street Party, Herberton

\* Dates are subject to change without notice. Please confirm event details with organisers prior to event.

<p>SATURDAY <b>27 JUNE</b></p>	<p><b>Art Workshop – Watercolour techniques with Laura Ashcroft</b> Explore abstract watercolour techniques in a hands-on workshop. Ages 12+. Tableland Regional Gallery 9:30am-12pm Tickets \$30 on Eventbrite</p> <p><b>The Last Pint – live Celtic music</b> The Big Pub, Malanda 3pm-6pm FREE EVENT</p>
<p>MONDAY <b>29 JUNE</b></p>	<p><b>Atherton Show</b> 29-30 June Livestock displays, equestrian events, woodchopping, sideshow alley, fireworks, rides, and more. Tickets &amp; info: athertonshow.com.au</p>

**Don't miss your opportunity to advertise in the next issue of *What's On Tablelands!***

Our July issue features the **2026 School & Education Guide**  
Advertising deadline is **approaching!**  
***Hurry! Don't miss out!***  
Contact us today: [info@whatsontablelands.com.au](mailto:info@whatsontablelands.com.au)

**COME FLY WITH US**

**30 MINS \$583 FOR 2PAX**

**60 MINS \$946 FOR 2PAX**

**EXPLORE  
ATHERTON TABLELANDS**

**TINAROO 'N'  
TABLELANDS  
-SCENIC FLIGHTS-**

**BOOK WITH TREVOR : 0400 750 330**

# what's happening, when & where!



Visit our online calendar at  
[www.whatsontablelands.com.au](http://www.whatsontablelands.com.au)

## HEALTH • WELLBEING • SPORT

### Atherton parkrun – 7am (Sat)

Cnr Herberton Rd & Weaver St, Atherton.  
0409 958 129. [facebook.com/athertonparkrun](https://facebook.com/athertonparkrun)

### Awareness Through Movement (Feldenkrais)

6:15pm (Tue), online, 1:30pm & 5:30pm (Wed),  
8:45am (Thu). Malanda Men's Shed Hall, Mary St,  
Malanda \$15. Suits all levels of fitness.  
Grace 0428 451 679

### Indoor Bowls Atherton – 8:30am (Thu)

Masonic Hall, Golf Links Rd, Atherton. 4091 1381

### Meditation & Discussion – 2pm (1st Sun of the month)

Meditation, followed by discussion on a  
spiritual theme. Free. 4095 4689

### Pickleball – 4:45pm (Tue), 6pm (Thu), 8:30am (Sun)

Malanda High School Hall. \$5 per session.  
Equipment provided. Frances 0419 792 786

### QiGong Halloran's Hill – 9.30am (Thu)

A U3A class. Lesley 0447 825 554

### Sound Meditation – 6pm (every 2nd Wed of the month)

@ CWA Malanda. Debbie 0427 559 142  
FB: [debbiesavagetherapies](https://facebook.com/debbiesavagetherapies)

### Tableland Bush Walking Club – (every 2nd Wed & Sun)

New Members welcome. View program  
online: [tablelandsbushwalkingclub.org](http://tablelandsbushwalkingclub.org)

### Tableland Dog Obedience Club Dog Training Classes

– 6pm (Wed) @ 44 Mabel St, Atherton.  
Enrolments 1st Wed of the month. Check FB or  
[tablelanddogobedience@gmail.com](mailto:tablelanddogobedience@gmail.com)

### Taekwondo/Self Defence – 4pm & 5:45pm (Tue & Thu)

Merriland Hall, Atherton Showgrounds.  
Annette 0427 581 482

### Tai Chi Yungaburra – 4:30pm (Mon),

Yungaburra Community Club, 8:30am (Fri).  
Yungaburra Rec Shed. Maria 0414 302 759

### Walking Group – 9am (Mon/Wed/Fri) ECHO,

13 Eacham Pl, Malanda. Free. All welcome.  
4096 6634

### Yoga with Gillian, Tolga – 5:45pm-7:15pm (Tue)

Tolga CWA Hall, opp. Post Office. All levels, Hatha  
incorporating stretch, strength, breathwork and  
meditation. Gillian 0407 171 537  
FB: [HappyFeetYoga](https://facebook.com/HappyFeetYoga)

### Yoga/Qigong with Lyndel – Malanda, 5pm (Tue)

Uniting Church Hall, 10am (Wed) Chair Yoga,  
CWA Hall. \$15 per class. Lyndel 0488 559 281

### Yoga with Carina

9am (Wed) Stretch Yoga Seniors Class @ CWA  
Millaa Millaa, \$5 per class. 9am (Fri). General class  
\$10. 82 Sheehan Rd, Tarzali. 0402 208 377

### Zumba Gold – 9am (Mon), 9am (Fri) @ Tolga

CWA Hall. Dance fitness suitable for beginners &  
older participants. \$11 class. Ann 0418 826 168 or  
[anniemc9@gmail.com](mailto:anniemc9@gmail.com)

## SOCIAL • MUSIC • DANCE

### Bingo – 9:15am (Tue), doors open at 8:45am.

Atherton International Club. Proceeds go to  
Atherton Hospital FNQHF. 4091 4970

### Bingo – 9:30am-12pm (Wed), doors open at

8:30am. Yungaburra Hotel Ballroom. Proceeds  
go to Yungaburra Beautification.

### Bingo – 9am (Sun) Anthill Motel, 79 Byrnes St,

Mareeba. Proceeds go to Friends of Mareeba  
Hospital. 0439 754 380

### Learn to Play Canasta – 12pm-4pm (Mon)

Have a coffee and play with friends. Atherton  
International Club. Free.

### Malanda Bridge Club – 1pm (Mon & Wed)

Bridge sessions at Malanda Bowls Club. All visitors  
and new players welcome. 0428 775 671

### Tableland Bridge Club – 9am (Thu) & 1pm (Sat)

Room 14, Community Centre, 42 Mabel  
St, Atherton. Visitors and new players welcome,  
lessons provided. 0428 913 512

### Tableland Country Music Club – Last Sun of

the month. Different venues, contact for details,  
free entry, new entertainers welcome.  
0400 885 586

### Tableland Music Lovers – 2-6pm (Sun)

Fortnightly. Open mic night, Grainger Lane,  
Atherton. Everyone welcome. \$5 entry fee.  
FB: [tablelandmusiclovers](https://facebook.com/tablelandmusiclovers)

### Tableland Social Dancers – 6:15pm Lesson,

7pm Social Dancing (Wed). Merrilands Hall,  
Atherton. Learn many styles of ballroom sequence  
dancing. \$5, join the fun. Annette 0488 954 202

### Tableland Ukulele Group – 1-4pm (1st & 3rd Sat)

Carinya Wellness Centre, 1 Mazlin St,  
Atherton. 2nd & 4th Sat at Old Post Office Gallery,  
Atherton-Herberton Rd, Atherton. All welcome.  
[tablelandukulelegroup@gmail.com](mailto:tablelandukulelegroup@gmail.com)  
Dale 0407 651 090

### YBI Concert – 4pm (2nd Sun of the month), live

music at the Yungaburra Rotunda (Yungaburra  
Hotel if wet). Free event. FB: [YungaburraRotunda](https://facebook.com/YungaburraRotunda)

**WE ARE FULL!**

**Contact us to join the waitlist**

## local business directory

Support local, shop local!

### Massage Therapist

## Janelle Moses

0418 889 773

Shop 2, Jack Street

Business Centre ATHERTON



### AEO – Annie's Essential Oils

Always Empowering Others

0407 982 002

#### Healing Touch

Raindrop Technique

Essential Oils

#### Sound Healing

Hot Stone Massage

Workshops

Malanda Wellbeing Centre

19 James St, Malanda 4885

Email: [aeo.taichi@gmail.com](mailto:aeo.taichi@gmail.com)



Where Touch Meets Ritual ~ Ritual Meets Renewal

- Signature Alchemy Facials
- Sacred Soul Massage
- Dermal Pro Peels
- Intuitive Reiki
- Ultraderm Facials
- Full Body Waxing
- LED Phototherapy
- Brow Design
- Bio Microneedling
- Natural Lashes

(07) 4095 0167 | 22 James Street, Malanda



This ad space could be yours!

To chat about advertising, email  
[info@whatsontablelands.com.au](mailto:info@whatsontablelands.com.au)

### Birdwing Therapies

Accredited Mental Health & Expressive  
Therapy Social Work Practitioners

Psychological & Play-based  
Therapy & Assessments

Medicare Rebates Available  
NDIS provider

19 James St. Malanda Ph: 0475 618 756

E: [info@birdwingtherapies.com.au](mailto:info@birdwingtherapies.com.au)



### The Spotted Quoll Nursery

Visit Alyson & Kath at  
1914 Chewko Road, Walkamin

open 7 days a week, 9am - 3pm

☎ 0439 371 399

✉ [info@spottedquollnursery.com.au](mailto:info@spottedquollnursery.com.au)

## COMMUNITY

**Access Place/Treasurers Op Shop** – Tue-Fri 9:30am-2pm, 72 Main St, Atherton. Community op shop raising funds locally. Free cuppa, street library and monthly Cuppa, Craft & Chat. All welcome. 0468 794 110

**Alcoholics Anonymous** – 7:30pm (Mon) CWA Hall, Wilkes St, Mareeba. 6:30pm (Tue) CWA Hall, Malanda. 7pm (Sat) CWA Hall, Jack St, Atherton. Support group for people wanting to stop drinking. 0419 757 035

**Alliance Française d'Atherton** – 4-6:30pm (Tue) & 4:30-6:45pm (Thu). Atherton Community Centre, 42 Mabel St. French conversation and language classes. French themed events. alliancefrancaise.atherton@gmail.com 0407 708 435

**Atherton Tableland Mineral & Lapidary Club** 5:30-9:30pm (Mon), 8-4pm (Wed), 8am-1pm (Sat). Racecourse Rd, Tolga. 0417 746 630 atmlc679@gmail.com

**Board/Cards Games Group** – 9am (Thu), ECHO, 13 Eacham Place, Malanda. All welcome. Free. 4096 6634

**Family Drug Support** – 5:30-7:30pm (4th Thu of month), Atherton Community Hall, Jack St, Atherton. Shammah 0490 799 180

**FNQ Community Exchange (Tablelands LETS)** – Meet regularly to barter and exchange skills and knowledge. Find out more at fnqces.org

**Highland Restorers Club** – 7-9am (Sun), Yungaburra Pit Stop Servo. Vintage and classic motorcycles and cars. Don 0417 707 693

**Atherton Lions Club** – 6pm for a 6:30pm start. (2nd & 4th Tue of the month). Atherton International Club. 0419 547 146

**Malanda Lions Club** – 6:30pm (1st & 3rd Wed of the month). The Top Rail, Malanda. 0456 368 245

**Mareeba Lions Club** – 6:30pm (1st & 3rd Tue of the month). Mareeba Leagues Club. 0488 591 318

**MAS Choir** – 3:30-4:30pm (Thu). Accompanied, non-audition group performing several times a year around Herberton. Free to participate. Chapel at Herberton Historic Village. Mary 0418 182 197

**Tolga Lions Club** – 7pm (3rd Tue of the month). Tolga Tennis Courts Clubhouse. 0459 088 059

**Men's Shed Atherton** – 8am-12pm (Mon-Fri). 1 Railway Ln, Atherton. 0403 560 440

**Men's Shed Herberton** – 7am-2pm (Tue & Thu). Herberton Railway Station, John St, Herberton. Judy 0411 279 152

**Men's Shed Malanda** – 9am-12pm (Mon, Wed, Fri). 21-23 Mary St, Malanda. Clem 0457 885 737 or Mike 0436 360 044

**Men's Shed Mareeba** – 8:30am-12pm (Mon, Wed, Thu). 26 Lloyd St, Mareeba. 0499 229 986

**Men's Shed Ravenshoe** – 9am-3pm (Wed-Fri). 52-56 Herbert St, Ravenshoe. G.Rae 0467 960 362

**Men's Shed Yungaburra** – 2-6pm (Tue & Thu). Yungaburra Memorial Shed, 7 Barrine Rd. Jeff 0448 168 674

**QCWA Malanda Craft Group** – 9am (Thu) Catherine St, Malanda. Morning tea provided. All welcome. Daune 0458 499 129

**QCWA Ravenshoe** – 12pm (every 1st Tue of the month) 15 Herbert St, Ravenshoe. ravenshoebranch@qcwa.org.au

**Rotary Club of Atherton** – 6pm (every 2nd & 4th Tue of the month), Atherton International Club. 0448 750 353

**Seniors Group** – Meet twice monthly. Various social activities. Singles and couples welcome. Heather 0458 316 081

**Soroptomist International** – 5:30pm (2nd & 4th Tue of the month), Atherton Hotel, Main St, Atherton. Elspeth 0418 728 614

**SWELL (Senior Women Enjoying Later Life)** 9:30am (Fri) Baptist Church Hall, Cnr Gibson and Lloyd St, Atherton. Guest speakers, excursions, laughter. Rene 0400 675 729

**The Grove Activities Centre** – 9am-2pm (weekdays), 11 Grove St, Atherton. See calendar: tclink.org.au/thegrove/

**U3A Atherton Tablelands** – 9:30am (Mon). Room 22, Community Centre, 42 Mabel St, Atherton. Check website for event details. 0400 660 026 or athtablends.u3anet.org.au

**Women's Survivor Group** – Meet fortnightly at Atherton CWA. For women of all ages impacted by violence or harm. Coffee, connection, craft. Free. Tablelands Sexual Assault Service 4091 4036



### INGREDIENTS

1-2 sheets puff pastry, thawed	1-1½ cups grated tasty cheese
2 cups mushrooms, sliced	Salt and cracked pepper
1 onion, thinly sliced	Optional: garlic, thyme or chives
Olive oil or butter	
150-200g Philadelphia cream cheese	

## Recipe of the month

### Mushroom & Cheese Puff Pastry Slice

#### METHOD

1. Preheat oven to 200°C (180°C fan) and line a tray with baking paper. Lay puff pastry on the tray and lightly score a 2cm border around the edge.
2. Heat olive oil or butter in a pan over medium heat. Cook onion until soft, then add mushrooms (garlic if using) and cook until golden and any moisture has evaporated. Season with salt and pepper.
3. Spread Philadelphia cream cheese evenly inside the pastry border. Top with the mushroom and onion mixture, then sprinkle over grated tasty cheese. Add thyme or chives if using.
4. Leave as an open tart or place another pastry sheet on top and crimp the edges.
5. Bake for 20-25 minutes until golden, puffed and bubbling. Rest for 5 minutes before slicing and serving.



Recipe of the month courtesy of Tablelands to Tabletop

# what's happening, when & where!



## KIDS • YOUTH

**Atherton Basketball Assoc** – from 4pm (Tue, during school terms). Atherton State High School Hall, Maunds Rd, Atherton. athertonbasketballassociation@gmail.com

**Atherton District Girl Guides** – from 3:30pm (Mon during school terms), ages 5+, Girl Guide Hall, Robert St, Atherton. 0428 914 758

**Atherton Junior Golf** – 8-11:30am (Sun) competition day, 4-5:15pm (Wed & Thu) practice. Ages 5-17yrs, Atherton Golf Club. athertonjunorgolf@outlook.com  
FB/web: atherton golf club

**Atherton Mainly Music** – 9:30-11am (Mon) Atherton Baptist Church Hall, Gibson St. Early childhood educational playtime and activities. Morning tea. \$6 per family. Coral 0414 380 263

**Tablelands Home Education** – Gatherings for homeschooling families (every Thu). Times and locations vary. FB: Tablelands Home Education tablelandshomeed@gmail.com

**Early Years Place (EYP) Playgroup** – 9:30-11:30am Tues, Wed (fortnightly) & Thurs. Ages 0-8, all welcome. Dimbulah Community Centre, 16C Raleigh St, Dimbulah. FREE. Find us on FB or 4093 5444

## NATURE • PLANTS

**Atherton Seedsavers & Gardening Group** – Meet every 2nd month, various locations. athseedsavers@urbanfox.com.au

**Let's Grow Julatten & Molloy Garden Club** – 8am (Tues), Ahoy Mt. Molloy Coffee Shop or a member's garden. Ying Tee: eatgrowlove75@gmail.com

**Malanda Community Garden** – 9am (Mon), ECHO, 13 Eacham Place, Malanda. All welcome. Free. 4096 6634

**Millaa Millaa Garden Group** – 8am (Mon), Meet to maintain gardens and finish at 10am for coffee/cake at Rumours Cafe.

**Ravenshoe Seed Savers** 9:30am (1st Sat of the month, excluding Jan). Various locations. FB for updates.

**Tableland Branch of Native Plants Qld** – 7:30pm (4th Wed of the month), Tolga CWA Hall. Bush excursion following Sun of the month. Peter 0418 719 748 or Chris 4091 3082

**TREAT Rainforest Tree Nursery & Revegetation** – 8-11am (Fri) QPWS Nursery, McLeish Rd. Lake Eacham.

**Yungaburra Landcare** – 8-10am (Fri), Allumbah entrance, Penda St. Morning tea afterwards. David 0400 005 085 or Paul 0419 716 196

**Tableland Garden Group** – 2pm (2nd Sat of the month), tablelandgardengroup@outlook.com

## ART • CRAFT

**Handwork Craft Group** – 9am-12pm (Tue) Old Post Office, Herberton Rd, Atherton. Karen 0427 698 267

**Mareeba Craft on the Fringe** – 9:30am-12pm (Tue) Centenary Park, Byrnes St, Mareeba. pederulla@hotmail.com

**Mareeba Art Society** – 10am-2pm (daily) MAS Gallery 58 and shop open. 345b Byrnes St, Mareeba. 0415 852 744  
–9am-12pm (Mon) Painters in the Park  
–9am-12pm (Tue) Craft & Cuppa, Craft Share  
–9:30am-12pm (3rd Sun of the month)  
–Beginners Painting 5pm (every 3rd Tue of the month). MAS monthly meeting, all welcome.

**Mend Make Create** – 9am-12pm (1st Sat of the month), CWA Hall, Kehoe Pl, Yungaburra. Uncover the secrets of sewing with expert tips! By donation. 0438 572 207 or vberry@westnet.com.au

## local business directory

Support local, shop local!

**Mareeba Leagues Club**  
SINCE 1993  
*'Supporting our Local Community'*

**OPEN 7 DAYS  
FROM 10.00AM**

**Breakfast – Sat & Sun  
8.00am – 11.00am**

**Daily lunch  
From 11.30am**

**Dinner  
Sun-Wed from 6.00pm  
Thurs- Sat from 5.30pm**

**All day dining Fri & Sat**

Doyle street, Mareeba

**Phone: 4092 2922**

**HIGH POINT  
MEDIA**

Social media management  
for local businesses

Content, posting & strategy

Atherton Tablelands | 0405 525 000

**CROSS STITCH &  
QUILTING CORNER**

Phone & mail orders available.  
Hope to hear from you soon.

4096 5109

Rural No. 10 Hillcrest Rd MALANDA  
(corner of Hillcrest Rd & Millaa Millaa-Malanda Rd)  
cross-stitch-corner.com.au

**Rested Minds**

Trauma Informed  
Disability Services  
Psychological Support  
& Counselling

Allied Health  
Expressive Arts  
Practitioners

Supporting referrals for:  
NDIS psychosocial plans,  
Victim Assist claims, WorkCover,  
Medicare, TELUShealth (EAP),  
professional supervision, private  
clients, aged care packages.

0477 004 677 | 4 Lions St, Malanda  
admin@restedmindsmalanda.com.au  
www.restedminds.com.au  
(online referral forms)

Takeaway, Dine in, Catering  
Gluten Free & Vegetarian Options

**SILO SUSHI**

Japanese & Asian Foods

Phone Orders Welcome!  
4091 1769  
3B Silo Central Shopping Centre  
Atherton

**HAYEN COLOUR ANALYSIS**

Find your  
personalised colour season  
and discover your best colours in  
fashion, make-up and hair.  
Personalised colour draping, or  
virtual analysis.  
Located in Tolga, FNQ.

www.havencolouranalysis.com.au

**This ad space could be yours!**

To chat about advertising, email  
info@whatsontablelands.com.au



# Shop local at the businesses we love!



## My Pantry

8 Main St, Atherton  
4091 3714

[mypantry.online](http://mypantry.online)

My Pantry, Your Pantry!  
Homecooked country food.  
Take-away and bake at home.  
Savouries, gluten free and sweets.  
Freshly made or frozen ready meals.



## Tablelands to Tabletop

41 Strattmann St, Mareeba  
0419 719 487

Winter-ready produce, locally sourced and seriously fresh. Build soups, roasts, and lunchboxes with seasonal fruit and veg, plus local pantry items. Shop in-store or order online for delivery!



## Malanda Seafood

Shop 2, 34-36 James St, Malanda  
4096 6844

Stop guessing where your seafood comes from. Know your seafood. Ours is wild-caught, locally sourced, and handled with care. Award-winning and locally owned, Malanda Seafood is your trusted Tablelands supplier since 2012.



## Uptown Music Atherton

7D Herberton Rd, Atherton  
4091 2874

Think Red. Faster. Brighter. Louder...

Trombone, drum stool, saxophone strap, mini maracas, harmonicas, tambourine, guitar lead, glockenspiel, electric bass guitar.

Uptown Music Atherton—the little music shop with a lot!



## Our Wildest Dreams

31 Main St, Atherton  
4001 2966

[ourwildestdreams.com.au](http://ourwildestdreams.com.au)

Exclusive Australian Designers.

Unique Clothing, Gifts and Quality Leather Accessories.



## Artistree Gallery

14 Kehoe Pl, Yungaburra  
4095 3269

[artistreegallery.com.au](http://artistreegallery.com.au)

High quality, beautiful, sustainable, handcrafted items from a diverse range of local artists.

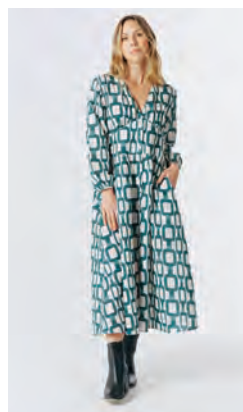


## Cowgirl Country

67 Main St, Tolga  
0400 801 508

[cowgirlcountry.com.au](http://cowgirlcountry.com.au)

Unique, one-off creations. Cowhides, exotic hides, country themed toys, clothing, décor, gifts and more.



## Winter & Mann

2/30 Cedar St, Yungaburra  
0431 200 684

[winterandmann.com.au](http://winterandmann.com.au)

A selection of premium Australian fashion, art, and gourmet food. Showcasing exceptional creators from across the country and our local region. Open 7 days.





# Faces of the Tablelands

The Great Wheelbarrow Race Parade, Mareeba, 8 May 2026



## TASTE PARADISE! To You. For You. Oz Wide.



Mareeba. Atherton. Cairns. Port Douglas. Townsville.

Coffee Works [.com.au](http://www.coffeeworks.com.au)



# Markets

*On the Tablelands*



## Archer Creek Markets - Ravenshoe Lions Club

2nd Sunday of the month  
7am-12noon  
Archer Creek Rest Area,  
Kennedy Highway

## Atherton Markets

1st Saturday of the month  
6am-12noon  
Lutheran Church, Golf Links Drv

## Atherton Undercover Markets - Atherton Lions Club

2nd Sunday of the month  
7am-12noon  
Atherton Showgrounds

## Dimbulah QCWA Markets

Temporarily closed  
until further notice  
Dimbulah QCWA Grounds

## Julatten Markets

Temporarily closed  
until further notice  
Geraghty Park Hall

## Koah Monthly Market

1st Saturday of the month  
8am-12noon  
Koah Hall, 322 Koah Road

## Kuranda Community Market

2nd Sunday of the month  
9am-1pm  
Kuranda Amphitheatre

## Kuranda Markets

Original Rainforest Market:  
Daily, 10am-3pm

Kuranda Heritage Markets:  
Wed-Sun, 10am-3:30pm

## Malanda Markets - Malanda Lions Club

3rd Saturday of the month  
7am-12noon  
Malanda Showgrounds

## Mareeba Markets - Mareeba Lions Club

Every 2nd & 5th Saturday  
of the month, 7am-12:30pm  
Centenary Park

## Millaa Millaa Market Day

Bi-monthly, first Saturday  
(May-Nov)  
Main Street, Millaa Millaa

## Mt Molloy Markets

1st Saturday of the month  
(Mar-Dec), 8am-12noon  
Fraser Road, Mt Molloy

## Tolga Markets

1st Sunday of the month  
7am-12noon  
Morrow Park Racecourse

## Tumoulin Country Markets

4th Sunday of the month  
(Jan-Nov), 8am-1pm  
Tumoulin Railway Station

## Wondecla Markets

3rd Sunday of the month  
7am-12noon  
Wondecla Sports Ground

## Yungaburra Markets

4th Saturday of the month  
7:30am-12:30pm  
Bruce Jones Market Grounds

Contact the market organisers for more information



- Gifts for Her
- Gifts for Him
- Children's Toys
- Home Decor
- Souvenirs

Open 7 days Found inside the Mareeba  
Heritage Centre, 345 Byrnes Street, Mareeba

[www.mareebaheritagecentre.com.au](http://www.mareebaheritagecentre.com.au)



## FARMHOUSE Café

OPEN DAILY 10AM-4PM

(Closed February. Check website for exceptions)

Home of the finest Ice Cream, Cheese & Yoghurt

Lunch • Cake • Coffee • Devonshire Tea



254 Brooks Rd, Millaa Millaa | 07 4097 2400 | [mungallicreekdairy.com.au](http://mungallicreekdairy.com.au)



## OUR PLACE RESTAURANT YUNGABURRA

Dinner: Thursday to Monday from 5.30pm

Lunch: Friday to Monday 12pm to 2pm

Bookings Essential

17 Eacham Rd. Yungaburra

[ourplacrestaurant.net](http://ourplacrestaurant.net)

4095 2235



# MALANDA MOVIES

## 05 June - 07 June

Scary Movie (M), Masters of the Universe (M), The Mandalorian & Grogu (M)

## 12 June - 14 June

Scary Movie (M), Masters of the Universe (M)

## 19 June - 21 June

Malanda Theatre Company Presents *History, Mystery & Mayhem*

## 25 June - 28 June

Toy Story 5 (PG), Minions and Monsters (PG), Supergirl (M)

## June Movies

For session times, go to [majestictheatre.com.au](http://majestictheatre.com.au)  
or call the movie info line on 4096 5726

Majestic Theatre Malanda, 1 Eacham Place, Malanda

CHECK WEBSITE FOR SHOW TIMES

[mareebadrivein.com.au](http://mareebadrivein.com.au)

SLEEP OUT AFTER THE MOVIE



0475 162 040  
5303 Kennedy Hwy  
MAREEBA

CAFE ONSITE  
Serving classic burgers,  
snacks & drinks

# GILLIES HIGHWAY 100

## ★ ANNIVERSARY ★ CELEBRATION

*A century of roads, stories & community*



VINTAGE, VETERAN  
& CLASSIC  
CARS & BIKES



ENTERTAINMENT



COMPETITIONS

★ FREE ★  
FAMILY  
FUN EVENT



*A fun time for  
the whole family!*



CELEBRATING THE HISTORY OF  
★ THE GILLIES HIGHWAY ★

10<sup>TH</sup> ★ 11<sup>TH</sup> ★ 12<sup>TH</sup>  
JULY 2026



HELD IN  
YUNGABURRA

